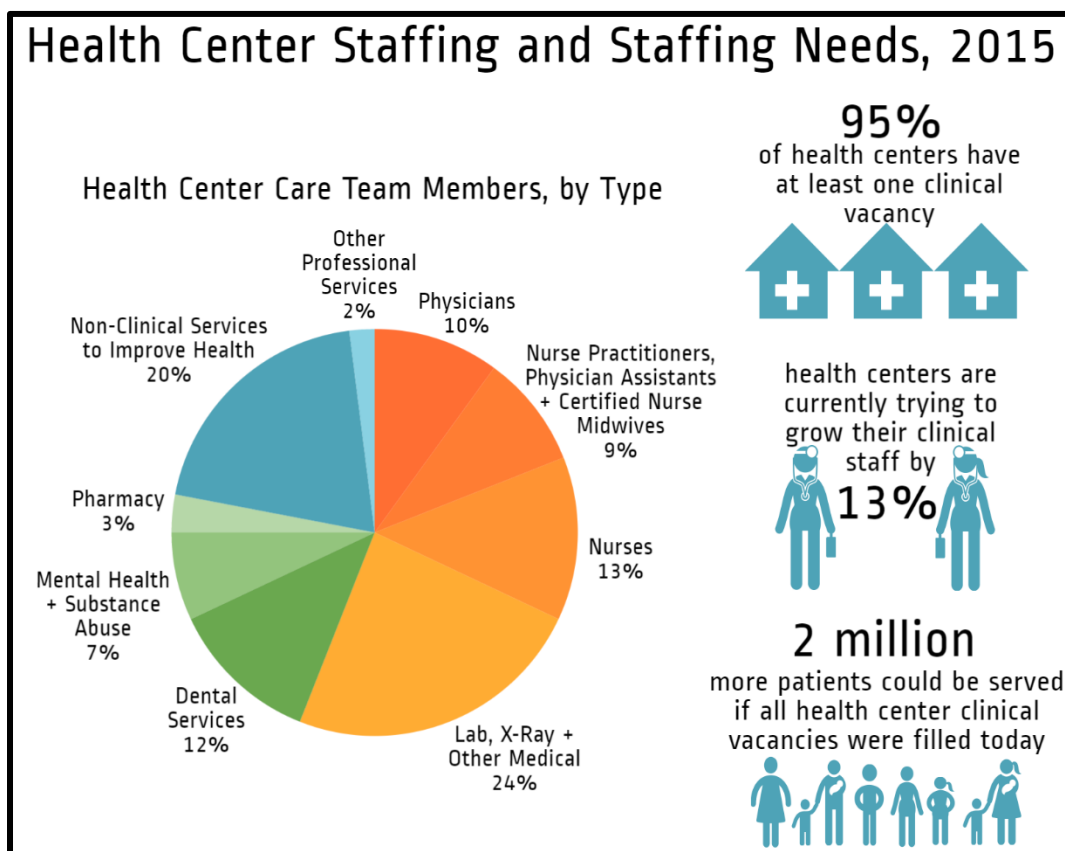


Community Health Center Workforce and Staffing Needs

Health Center Program Grantees and look-alikes are non-profit, community-directed, primary and preventive care providers serving low-income and medically underserved communities.⁵ Thanks to a variety of care team members, health centers have grown to currently serve over 25 million patients.* In 2015 federally-funded health centers employed over 120,000 full time equivalent staff responsible for the direct delivery of clinical care and wellness services.¹

However, health centers still struggle with gaps in their clinical staff. Results of a recent national survey of health centers reveal that nearly all health centers (95%) have at least one clinical staff vacancy and that those with vacancies are currently recruiting for 13% more clinical staff than they have today. Analysis of these survey results finds that nationally, **health centers could serve 2 million more patients if all their clinical vacancies were filled today.**²



Health centers continue to innovate in the face of recruitment and retention barriers, and participate in federal programs designed to place clinicians in underserved areas, such as the National Health Service Corps, Nurse Corps, and Teaching Health Centers programs. These initiatives, along with the Health Centers program, are particularly important in maintaining a full and adequate workforce ready to serve our nation's most vulnerable patients.

⁵In this document, unless otherwise noted, the term "health center" is generally used to refer to organizations that receive grants under the Health Center Program as authorized under section 330 of the Public Health Service Act, as amended (referred to as "grantees") and FQHC-look alike organizations, which meet all the Health Center Program requirements but do not receive Health Center Program grants.

* NACHC, 2016. Includes all patients of federally-funded health centers, non-federally funded health centers, and expected patient growth for 2016.

Sources: ¹ 2015 Uniform Data System, Bureau of Primary Health Care, HRSA, DHHS. ² NACHC, 2015. 2015 National Health Center Clinical Workforce Survey: Vacancy, Recruitment, and Retention. For more information visit <http://bit.ly/nachcworkforce>.