



ROAD TO CMS EMERGENCY PREPAREDNESS REQUIREMENTS: HANDS ON HVA & EOP

CONNECT CONSULTING SERVICES, INC.

FEBRUARY 28, 2017



2

TRAINING AGENDA

- HCPSC Welcome and Ice Breaker
- How to Conduct an Hazard Vulnerability Analysis (HVA)
 - How to use the HVA information to create your Emergency Operations Plan (EOP)
- Hands on HVA Technical Assistance Session
- Key elements of a robust Emergency Operations Plan
 - HRSA Program Information Notices 2007- 015 and FTCA Policy Manual
 - CMS Emergency Preparedness Requirements EOP Checklist
- EOP Technical Assistance
- Debrief and Next Steps

- 3
- **Nora O'Brien**, MPA, CEM- CEO- CPCA staffer from 2001-2009, launched CCS in 2009 to assist clients with developing emergency management plans, training and drills and exercises
 - **Cathy Larsen**, MA, Director of Planning and Development- former Executive Director of Southern Trinity Health Center and years of healthcare emergency management planning
 - **Paul Small**, BA, EM, Emergency Management Planner- former U.S. Air Force Emergency Manager who has been stationed throughout the world planning and conducting exercises
 - **Norma Springsteen**, BA, Director of Operations- years of coordinating projects for the Yolo County Department of Public Health and CAPG

CONNECT
CONSULTING
SERVICES, INC.
PROJECT
TEAM
MEMBERS



4

CMS EMERGENCY PREP REQUIREMENTS

- In 2016, the Centers for Medicare and Medicaid issued final Conditions of Participation (CoP) for 17 types of Medicaid and Medicare providers @ emergency management- FQHCs, RHCs, CMHA, IHS, hospice, LTCs, etc. by [November 15, 2017](#)
- Requirements will include:
 - Conduct Risk Assessment and Planning
 - Develop Policies and Procedures
 - Create Communication Plans
 - Training and Plan Testing

[CMS Emergency Preparedness Rule Overview](#)



HCPSC CMS PROJECT OVERVIEW

- Offering a Health Center CMS Compliance Self- Assessment Tool- [January](#)
- Hosting monthly technical assistance calls to HCPSC members get to CMS Compliance – [January to June](#)
- Conduct an emergency management training geared to supporting HCPSC members seeking to meet the CMS emergency preparedness requirements- [June 27](#)



6 2017 CMS TECHNICAL ASSISTANCE SCHEDULE

- **February 28, 11am-** Emergency Plan policies and procedures development and update to meet the CMS requirements
- **March 28, 11am-** Communication plan development and update
- **April 25, 11am-** Emergency training process & documentation
- **May 30, 11am-** Preparing for tabletop and/or functional exercises
- **June 13, 11am-** Developing a full-scale exercise to test your emergency plans
- **June 27- 9am-3pm-** An in-person training on how to conduct a full-scale drill training with an exercise at a member health center

7

RISK ASSESSMENT

- **CMS Requirement:** All FQHCs must identify risks and vulnerabilities via a Hazard Vulnerability Analysis process **annually**
- A Hazard Vulnerability Analysis (HVA) created by [Kaiser HVA Tool](#) pinpoints:
 - *Hazards* and/or *vulnerabilities* that need your attention;
 - *Actions* that might be taken to reduce the impact of those hazards;
 - What *resources* are likely to be needed to *mitigate* and *prepare* for hazards.
- **Best practice tips:** Conduct a HVA for each CHC site annually and ask neighboring healthcare provider for their HVA - same area, same hazards!

8

HAZARD VULNERABILITY ANALYSIS (HVA) WHAT????

- **Hazard Vulnerability Analysis (HVA):**
 - Process to help Clinics evaluate their vulnerability to *specific* hazards;
 - Puts *each* hazard in perspective by using categories:
 - *Probability* of the Hazard Occurring;
 - *Impact* of the Hazard;
 - Human Impact;
 - Property Impact;
 - Business Impact.
 - *Preparedness* of your organization;
 - *Ability to Response* to the Hazard:
 - Internal Response;
 - External Response.



9

HAZARD VULNERABILITY ANALYSIS (HVA) PURPOSE

- **Purpose of HVA is to Make Risk-Based Choices:**
 - Address your Vulnerabilities;
 - Mitigate Hazards;
 - Respond to Events;
 - Recover from Events;
 - Create an Emergency Operations and Business Continuity Plans to address greatest Risks.




10

HAZARD VULNERABILITY ANALYSIS (HVA) PLANNING RESOURCE TOOL - KAISER PERMANENTE

Probability x Severity* = RISK

**HAZARD AND VULNERABILITY ASSESSMENT TOOL
NATURALLY OCCURRING EVENTS**



EVENT	PROBABILITY	SEVERITY = (MAGNITUDE - MITIGATION)						RISK
		HUMAN IMPACT	PROPERTY IMPACT	BUSINESS IMPACT	PREPARED-NESS	INTERNAL RESPONSE	EXTERNAL RESPONSE	
	<i>Likelihood this will occur</i>	<i>Possibility of death or injury</i>	<i>Physical losses and damages</i>	<i>Interruption of services</i>	<i>Preplanning</i>	<i>Time, effectiveness, resources</i>	<i>Community/ Mutual Aid staff and supplies</i>	<i>Relative threat*</i>

* SEVERITY = Magnitude (Impact) – Mitigation (Preparedness + Response)



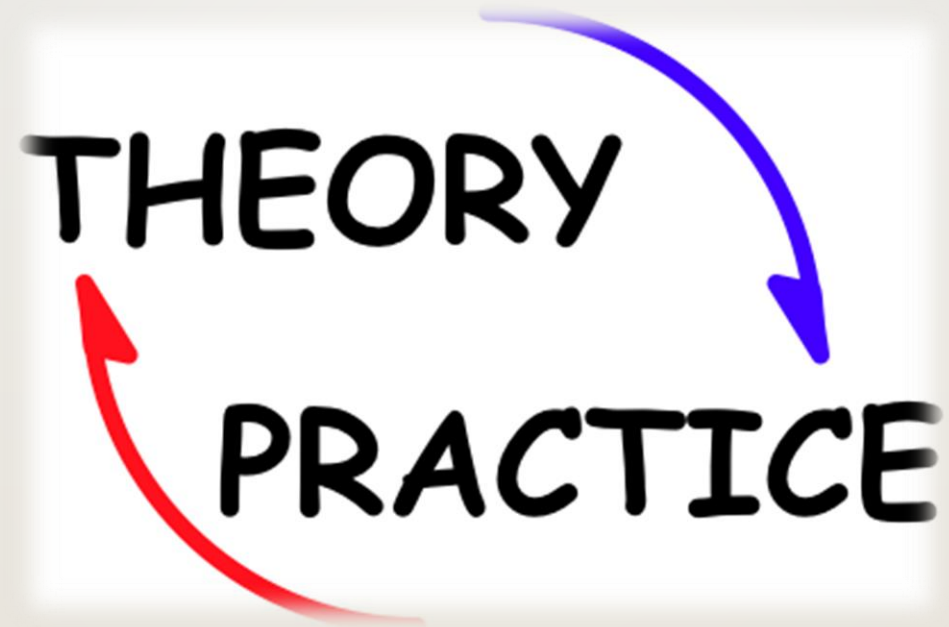
HAZARD VULNERABILITY ANALYSIS (HVA)

PLANNING RESOURCE TOOL - KAISER PERMANENTE

	A	B	C	D	E	F	G	H	I
1	HAZARD VULNERABILITY ASSESSMENT TOOL								
2	NATURALLY OCCURRING EVENTS								
3	SEVERITY = (MAGNITUDE - MITIGATION)								
4	EVENT	PROBABILITY	SEVERITY = (MAGNITUDE - MITIGATION)					RISK	
Likelihood this will occur		HUMAN IMPACT	PROPERTY IMPACT	BUSINESS IMPACT	PREPARED-NESS	INTERNAL RESPONSE	EXTERNAL RESPONSE	Relative threat*	
5		Possibility of death or injury	Physical losses and damages	Interruption of services	Preplanning	Time, effectiveness, resources	Community/ Mutual Aid staff and supplies		
6	SCORE	0 = N/A 1 = Low 2 = Moderate 3 = High	0 = N/A 1 = Low 2 = Moderate 3 = High	0 = N/A 1 = Low 2 = Moderate 3 = High	0 = N/A 1 = Low 2 = Moderate 3 = High	0 = N/A 1 = High 2 = Moderate 3 = Low or none	0 = N/A 1 = High 2 = Moderate 3 = Low or none	0 = N/A 1 = High 2 = Moderate 3 = Low or none	0 - 100%
7	Wild Fire	3	1	3	3	1	1	1	56%
8	Earthquake (> 5.0)								0%
9	Landslide								0%
10	Severe Thunderstorm								0%
11	Tidal Wave								0%
12	Flood, External	3	1	3	3	3	3	3	89%
13	Drought								0%
14	Snow Fall								0%
15	Blizzard								0%
16	Ice Storm								0%
17	Temperature Extremes								0%
18	Dam Inundation								0%
19	AVERAGE SCORE	0.38	0.13	0.38	0.38	0.25	0.25	0.25	1%
20	*Threat increases with percentage.								
21	RISK = PROBABILITY * SEVERITY								
22	0.01 0.13 0.09								
23									
24									
25									
26									
27									
28									
29									
30									

12

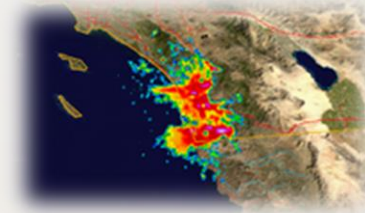
HAZARD VULNERABILITY ANALYSIS (HVA) PLANNING RESOURCETOOL - KAISER PERMANENTE



13

HAZARD VULNERABILITY ANALYSIS (HVA) NATURAL HAZARDS

- Wild Fire
- Earthquake (> 5.0)
- Landslide
- Severe Thunderstorm
- Tidal Wave
- Flood, External
- Drought
- Snow Fall
- Blizzard
- Ice Storm
- Temperature Extremes
- Dam Inundation



14

HAZARD VULNERABILITY ANALYSIS (HVA) TECHNOLOGICAL HAZARDS

- Information Systems Failure (> 4 hrs.)
- Communications Failure (> 4 hrs.)
- Fire, Internal (major)
- Electrical Failure
- Generator Failure
- Total Elevator Failure
- Water Failure
- Flood, Internal
- Fuel Shortage
- Sewer Failure
- Natural Gas Failure
- Fire Alarm Failure
- HVAC Failure
- Data Compromise
- Denial of Services
(computer/network/website)



15

HAZARD VULNERABILITY ANALYSIS (HVA) HUMAN HAZARDS

- Epidemic/Pandemic
- Mass Casualty Incident (trauma)
- Violent Person
- Train Crash (at facility)
- Terrorism (CBERN)
- Bomb Threat
- Civil Disturbance
- Hostage Situation
- Labor Action



16

HAZARD VULNERABILITY ANALYSIS (HVA) SUMMARY

I have the HVA done, now what do I do with all this info?

Potential Disaster	Probability Rating	Average Impact Rating	Average Mitigation Rating	Brief Description of Potential Consequences & Mitigation Actions
Natural Hazards Probability: 1=Very Low to 3=High Impact: 1=Minor annoyance to 3 =Total destruction				
Technological Hazards Probability: 1=Very Low to 3=High Impact: 1=Minor annoyance to 3 =Total destruction				
Human Made Hazards Probability: 1=Very Low to 3=High Impact: 1=Minor annoyance to 3 =Total destruction				

17

HAZARD VULNERABILITY ANALYSIS (HVA) Q&A



18 KEYS TO A SUCCESSFUL EMERGENCY OPERATIONS PLAN (EOP)

- Hazard Vulnerability Assessment (HVA)
- Policies and Procedures (Annexes, Quick Reaction Checklists)
- Emergency Communications Plan (ECP)
- Training and Testing



19

EOP 4 PHASES OF EMERGENCY MANAGEMENT

- Preparedness
- Response
- Recovery
- Mitigation



20

EMERGENCY OPERATIONS PLAN (EOP)

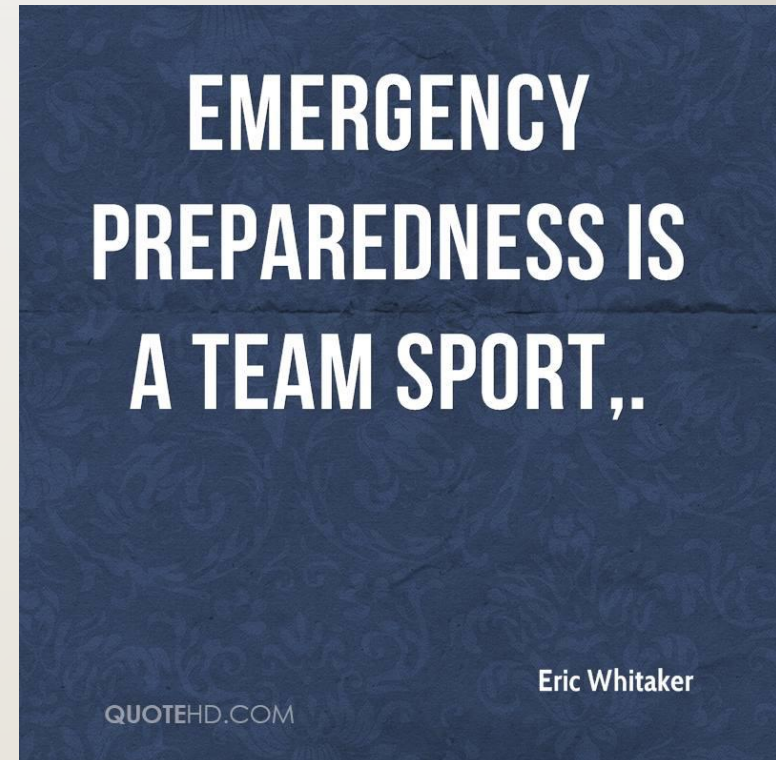
- **CMS Requirement:** Must develop and maintain an all hazard plan based upon the risks and vulnerabilities raised in the HVA
 - Emergency Operations Plan (EOP) and Business Continuity Plan (BCP) that can guide your organization’s response to both **medical and non-medical disasters**
 - Update EOP and BCP annually for each of your FQHC sites
 - EOP must include elements such as:
 - Incident Command System (ICS) to reflect who is in charge
 - Supplies and equipment to support effective disaster response and recovery
 - Making provisions for patient tracking and vulnerable populations health needs



21

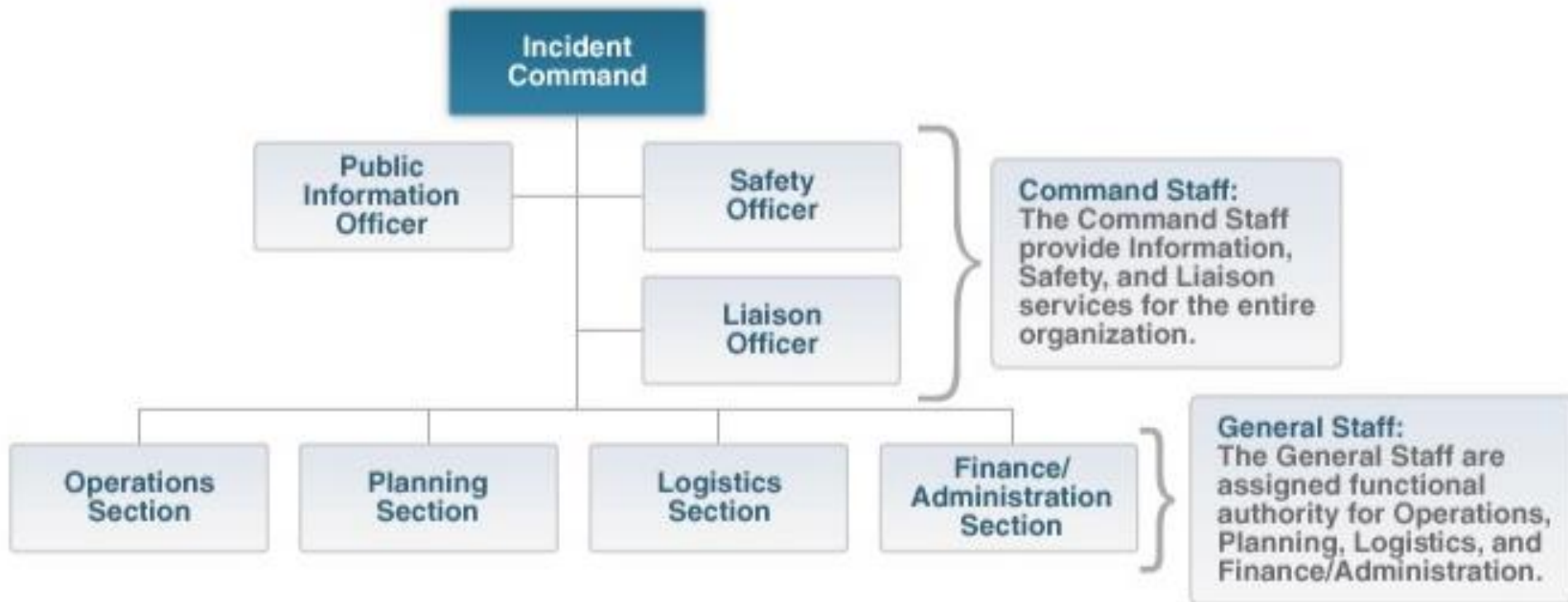
EOP CHECKLIST REVIEW

- Industry Best Practices
- Review Annually
- Based on CMS Rule dated September 2016
- CMS Interpretive Guidance TBD



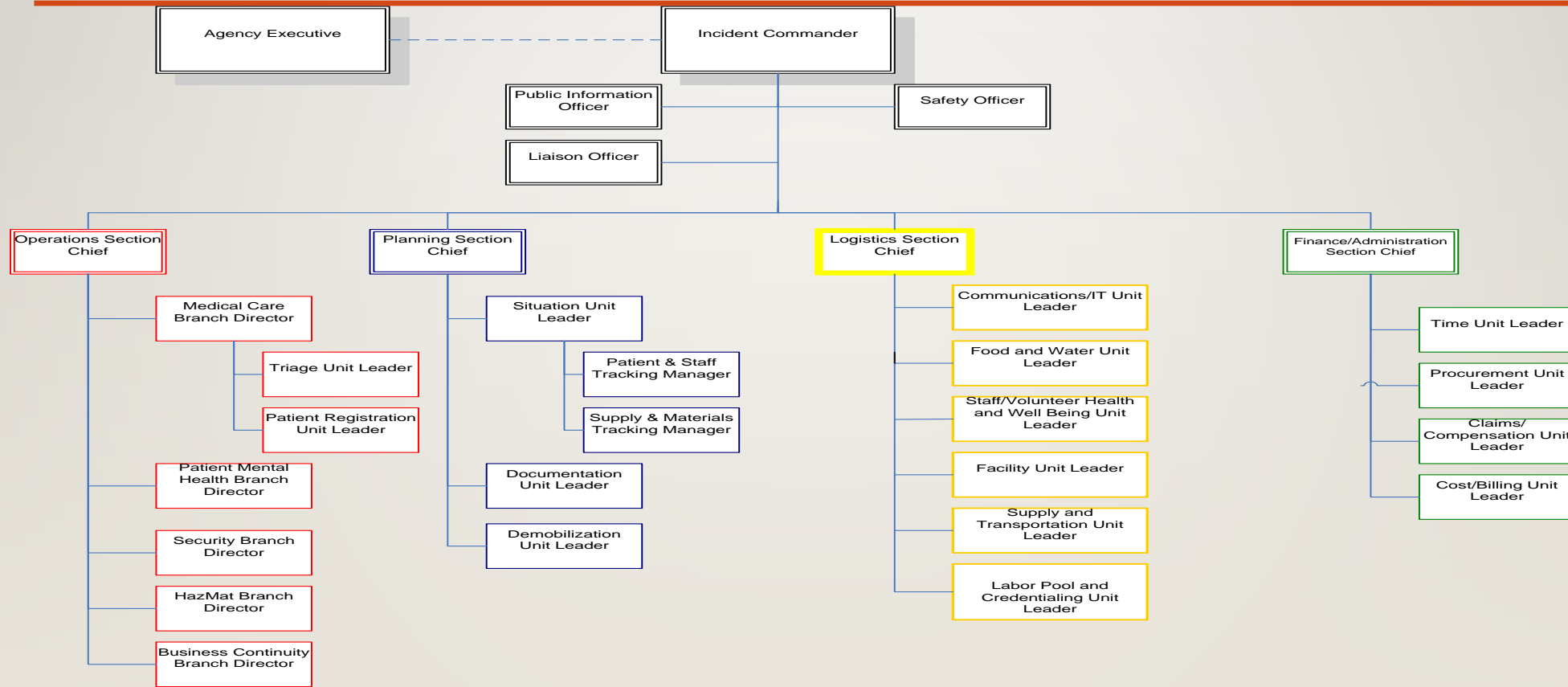
22

INCIDENT COMMAND SYSTEM COMMAND & GENERAL STAFF



23

INCIDENT COMMAND SYSTEM



24

EMERGENCY COMMUNICATIONS PLAN

- **CMS Requirement:** Must have internal and external communications plans & redundant communication systems
- **Internal:** Notify patients, staff, and Board of a disaster impacting the FQHC
- **External:** Notify external stakeholders such as federal, tribal, State, and local agencies
- **Redundant communications:** Have radios, satellite phones, ham radios, etc.



TRAINING AND PLAN TESTING

- **CMS Requirement:** FQHCs must conduct and document annual training and test plans with 2 exercises annually
- **Training:** Conduct and document annual training on your emergency preparedness policies and procedures to all staff, volunteers, and Board
- **Exercises:** Must conduct and document two exercises annually of EOP
 - One must be a full scale drill that can be a community or facility based exercise
 - The other exercise can be your choice can be a functional or tabletop exercise



26

GOVERNMENT EMERGENCY TELECOM SERVICE (GETS)

- Provides national security and emergency preparedness personnel priority access and prioritized processing in local and long distance networks
- Intended use in emergency or crisis situation when landline network is congested
- No Cost to Subscribe
- <https://www.dhs.gov/government-emergency-telecommunications-service-gets>
- When applying for a GETS access users can also apply for Wireless Priority Service (WPS)
- WPS is similar to GETS the difference being WPS is for wireless networks

27 READY SAN DIEGO

San Diego County Emergency Resource App:

- Plan and Prepare;
- Emergency Disaster Info, Maps, Shelters;
- Recovery Resources, Assistance and Guidance



28



MEMBER DISCUSSION

- What are your **biggest** take-aways about the CMS requirements?
- Which **CMS EP Requirements** most concern you?
- How can we best **help** you?

29

TRAINING DEBRIEF AND NEXT STEPS

- Tell us what you liked about the training?
- What could we have done differently?
- Project Next Steps
- **Monthly** CMS EP requirement conference calls
- **June 27th training** on exercise design at a health center



30

OFFERS OF SUPPORT

- As a member of HCPSC, Connect Consulting Services will offer a **free 30 minute phone consultation** regarding your CMS compliance needs.
- In addition, Connect Consulting Services **will offer a 15% discount** on our planning, training, and exercise services.
- Please contact Norma Springsteen at Norma@ConnectConsulting.biz to schedule a call with us to see how we can help your FQHC

31



CONTACT US!



-
- Jill Webber, MPH, Program Manager
 - **Health Quality Partners – Health Center Partners**
 - 7535 Metropolitan Dr., San Diego, CA 92108
 - direct: 619.542.4324
 - fax: 619.906.2486
 - jwebber@hcpsocal.org
 - www.hqpsocal.org
 - Nora O'Brien, MPA, CEM, Chief Executive Officer
 - Connect Consulting Services
 - 701 12th Street, Suite 202, Sacramento, CA 95814
 - Nora@ConnectConsulting.biz
 - Office: 916 758-3220 Mobile: 916 806-7361
 - Twitter: @NoraConnect
 - www.ConnectConsulting.biz