



# MEMBER PROFILE 2019



**HEALTH CENTER PARTNERS**  
of Southern California

3710 Ruffin Road San Diego, CA 92123  
Advocacy@HCPSOCAL.org | 619.542.4300  
[www.HCPSOCAL.org](http://www.HCPSOCAL.org)



## Overview

**Health Center Partners of Southern California** consists of four companies (Family of Companies) that work collaboratively to help our members improve operational efficiencies and deliver high quality health care to improve the lives of southern California families. A champion for community health care, our Family of Companies blends its years of experience, richly talented staff and deep knowledge of our members to deliver programs, resources, and advocacy designed to enrich the patient experience.

Each of our health center member teams are unique in their journey to fulfilling the mission. Some are small and mighty, wearing various hats to fulfill program requirements and create access to care, while others are large with multiple service lines and geographic locations. All work diligently to ensure access to care for southern Californian families. Seven of our member organizations are within the largest 25 health centers in California (n=177), based on patients served. (Borrego, San Ysidro Health, Vista Community Clinic, Neighborhood Healthcare, North County Health Services, Clinicas de Salud Del Pueblo and La Maestra Community Health Centers.)

### Common challenges faced by HCP members

**Workforce** – difficult to recruit and compete in all domains: medical, dental, behavioral health; also for various levels of staff from physicians and nurses to medical assistants.

**State Barriers** – (delays and inefficiencies – licensing, reconciliation; along with state policies – State Plan Amendment Concerns, inconsistent Audits & Investigations, threats to 340B discount drug program, lack of same day billing for mental health).

**Anxiety over Technology** – Data needs, cybersecurity, protecting health information, telehealth, interoperability.

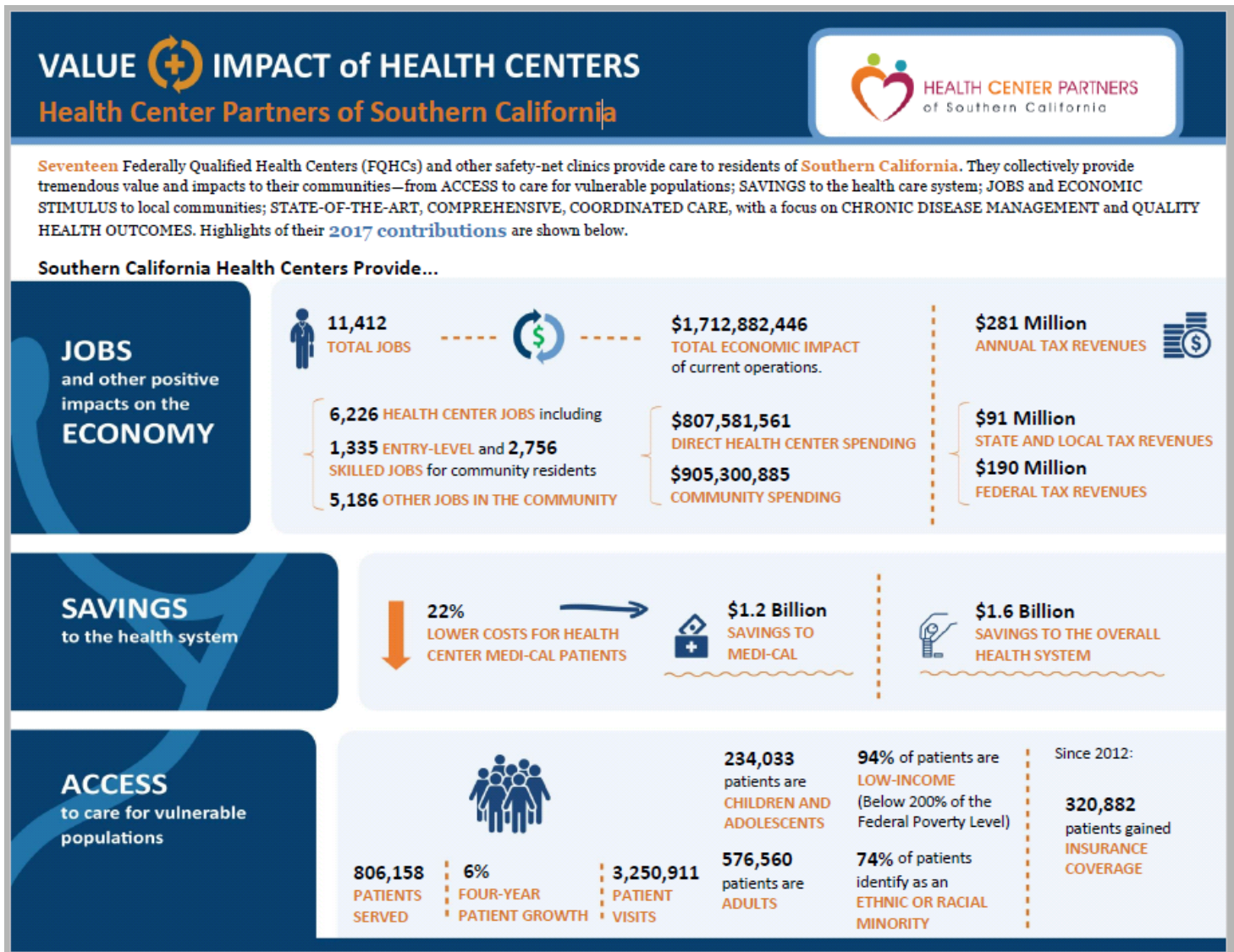
**Federal Barriers & Uncertainty** in the overall health environment (Medicaid Block Grants, Value Based Care, Funding Cliff).

**This report provides a snapshot of the 17-member organizations of Health Center Partners.**

A thick, horizontal teal brushstroke graphic with a textured, painterly appearance, spanning most of the width of the page.



## CHCs: A Vital Part of the Economy in Local Communities



Capital Link prepared this report using 2017 UDS data & IMPLAN online.  
St. Vincent de Paul Village Health Center data is included,  
as a member of IHP.

[Click Here to Read Full Report](#)



## Expanding Access to Special Populations

### Designation to Serve Homeless

Clinicas  
La Maestra  
Samahan

### Designation to Serve Migrants

Clinicas  
NCHS

### Designation to Serve Public Housing

Clinicas  
NCHS  
SYH  
La Maestra  
Borrego

### Indian Health Services

SIHC  
IHC  
SDAIC  
Sycuan

## Funding Cliff Impact: HRSA Grants in Full HCP Membership

- COMMUNITY HEALTH SYSTEMS, INC. **\$4,180,727**
- SAN DIEGO FAMILY CARE **\$2,244,716**
- LA MAESTRA FAMILY CLINIC, INC. **\$5,147,909**
- CLINICAS DE SALUD DEL PUEBLO, INC. **\$7,031,165**
- IMPERIAL BEACH COMMUNITY CLINIC **\$1,839,878**
- VISTA COMMUNITY CLINIC **\$6,440,902**
- SAMAHAN HEALTH **\$2,828,107**
- NEIGHBORHOOD HEALTHCARE **\$6,546,161**
- NORTH COUNTY HEALTH PROJECT, INC. **\$9,157,161**
- BORREGO COMMUNITY HEALTH FOUNDATION **\$4,210,174**
- MOUNTAIN HEALTH & COMMUNITY SERVICES, INC. **\$1,542,288**
- SAN DIEGO AMERICAN INDIAN HEALTH CENTER INC **\$1,165,224**
- CENTRO DE SALUD DE LA COMUNIDAD SAN YSIDRO, INC **\$10,085,28**

**Total HRSA  
for HCP:  
\$62,419,692**

## HCP Members - Annual Patients Served

### Under 25,000

IB  
MH  
Samahn  
SDAIC  
IHC

### 25,000 - 50,000

SDFC  
La Maestra  
CHSI

### 50,001 - 100,000

Clinicas  
NH  
NCHS  
SYH  
VCC

### 100,000+

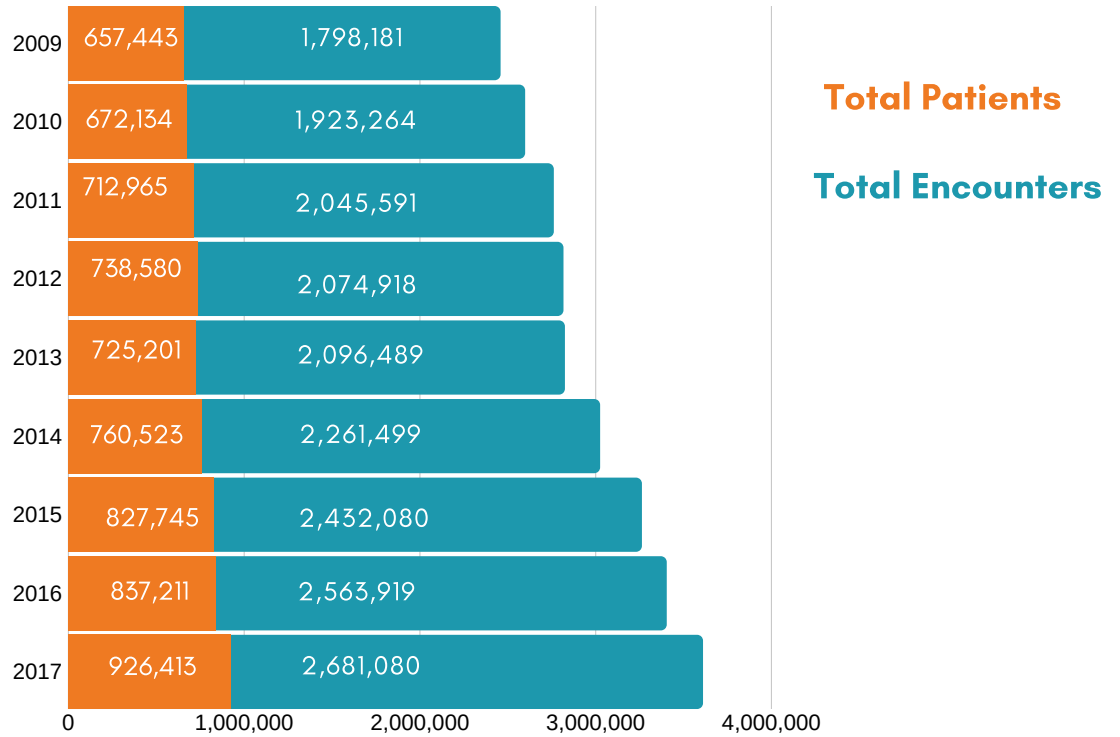
Borrego  
PPPSW

**Total Patients  
806,158 (UDS)  
926,413 (OSPHD)**

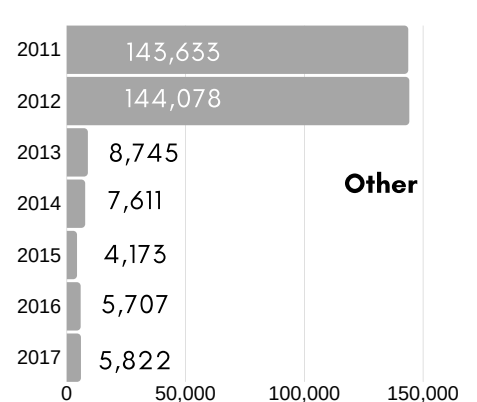
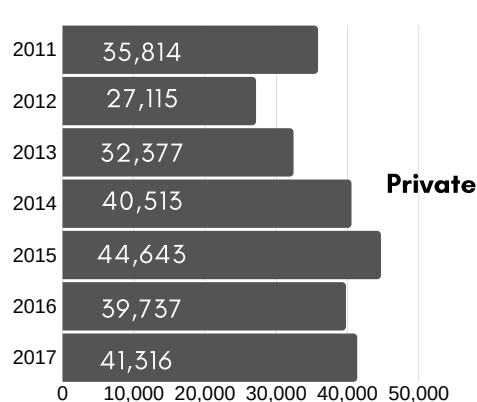
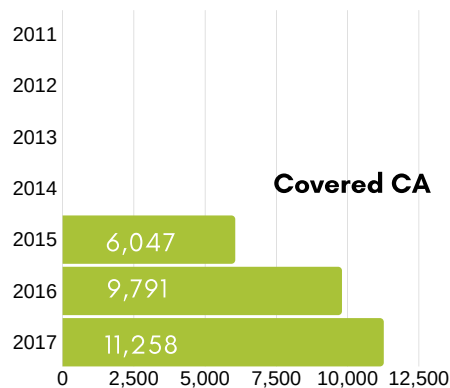
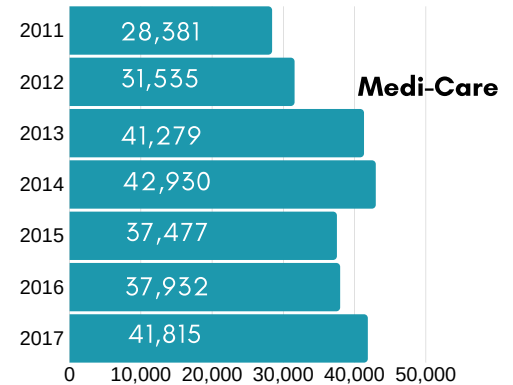
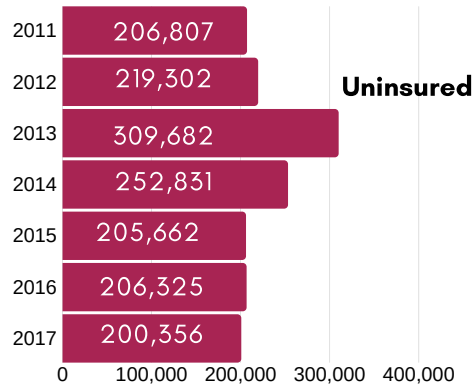
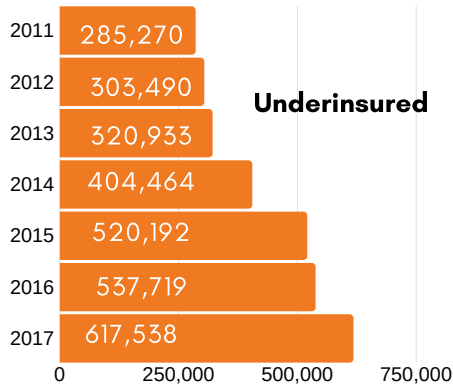


## HCP Members - Trending Data

Source:  
 OSPHD Annual Utilization of Primary Care Clinics, 2017



## Patient Coverage Comparison





**CEO - Mikia Wallis**

**Patients - 177,458**

**Staff - 719**

**Budget - \$220m**

BH was founded in 1982 and has grown rapidly since obtaining their first HRSA grant. BH now operates 25 sites within San Diego, Riverside and San Bernadino Counties and serves more than 177,000 patients. BH represents primarily rural areas with the greatest concentration of sites in Riverside County. Six sites are exclusively dental, and sixteen sites offer telehealth services.

Federal Districts- 36,41,42,50,53  
 State Senate - 28,31,38  
 State Assembly- 42,56,60,61,67,71,75,79



**CEO - Yvonne Bell**

**HCP Board Rep - Claudia Galvez**

**Patients - 53,438**

**Staff - 380**

**Budget - \$46m**

In 1970, CDSDP became the first federally funded migrant health center in the United States. Clinicas operates 10 health centers and 4 dental clinics, along with several WIC programs. While they are the only member representing Imperial County, they also have sites in Riverside County.

Federal Districts - 36,51  
 State Senate- 28,31,38,39  
 State Assembly - 42,56



**CEO - Lori Holeman**

**Patients - 27,866**

**Staff - 161**

**Budget - \$21m**

CHSI was founded in 1974 and currently has six locations covering the counties of Riverside, San Bernardino, and San Diego. Each location comprises of a Medical Clinic and a Dental Clinic. Some locations have an Optometric Clinic as well as a Mental Health clinic.

Federal Districts - 41,50  
 State Senate - 31,38  
 State Assembly - 60,61,75



Federal District- 50  
 State Senate- 38  
 State Assembly- 75

**CEO - Steve Gold**

**Patients - 9,559**

**Staff - 74**

**Budget -**

Established in 1970, IHC is a consortium of nine tribes and operates two sites: Valley Center and Santa Ysabel, both in San Diego County. Medical, Dental and Behavioral Health Services are offered in both locations. Outreach and prevention services are offered through the IHC mobile fleet. Funded by Indian Health Services (Dept. of the Interior). Tribes Served: Inaja-Cosmit, La Jolla, Los Coyotes, Mesa Grande, Pala, Pauma, Rincon, San Pasqual, Santa Ysabel.



Federal District - 51  
 State Senate- 40  
 State Assembly - 78

**CEO - Connie Kirk**

**Patients - 9,835**

**Staff - 74**

**Budget - \$8.6m**

Founded in 1971, Imperial Beach operates two health center sites in the South Bay of San Diego County, providing medical and behavioral health services. IB operated as a small community clinic for 30 years before earning FQHC status in 2006



**LA MAESTRA**  
**COMMUNITY HEALTH CENTERS**  
 City Heights · El Cajon · National City · Lemon Grove

Federal Districts- 50,51,53  
 State Senate- 38,40  
 State Assembly- 71,79,80

**CEO - Zara Marselian**

**Patients - 53,477**

**Staff - 383**

**Budget - \$38m**

Founded in 1991, LMCHC operates four medical clinics, seven dental sites, three school-based health centers and a mobile unit in San Diego County. LMCHC has a long history of providing care to refugees and immigrants, beginning as the La Maestra Amnesty Center to help City Heights residents gain citizenship. Currently, their patient population represents immigrants from over 60 countries.



Federal Districts - 50,51,53  
 State Senate- 38,39,40  
 State Assembly- 71,75,78,80

**CEO - Judith Shaplin**
**Patients - 7,866**
**Staff - 74**
**Budget - \$9.8m**

Founded in 1975, Mountain Health now operates four primary care clinics in San Diego County. As a rural health center, services also include a community center in Campo. The community center serves a critical role for nutrition, offering a food pantry as well as home food delivery for seniors. MH is a key partner with emergency responders in this fire prone area.



Federal Districts - 36,42,50,53  
 State Senate- 28,38  
 State Assembly- 42,67,71,75

**CEO - Rakesh Patel, MD**
**Patients - 65,399**
**Staff - 483**
**Budget - \$64m**

NH was founded in 1969 and now provides services at fourteen clinic sites throughout San Diego and Riverside counties. Four of the sites provide dental care and six sites offer chiropractic services. Last year, NH expanded behavioral health services to all its clinic sites.



*We're here for you.*

a california *health+* center

Federal Districts - 41,49,50  
 State Senate - 31,36,38  
 State Assembly - 61,71,75,76

**CEO - Barbara Kennedy**
**Patients - 65,357**
**Staff - 586**
**Budget - \$71m**

Founded in 1971 to serve rural areas of North County, NCHS received a Migrant Health Center grant in 1973. Since then the health center has grown to thirteen sites in San Diego and Riverside Counties. 16% of NCHS patients are migrant/seasonal workers. In addition to medical and dental sites, NCHS also offers WIC services in both counties.





**CEO – Darrah Johnson**  
**HCP Board Rep – Lori Keim**  
**Patients – 127,242**  
**Staff – 578**  
**Budget – \$73m**

Federal Districts– 36,41,49,50,51,52,53  
 State Senate – 28,31,36,38,39,40  
 State Assembly – 42,56,61,71,75,76,77,78,79,80

Planned Parenthood of the Pacific Southwest provides access to medical services in San Diego, Riverside and Imperial Counties since 1963. They operate 18 health center locations offering a full range of sexual and reproductive health care services and comprehensive education programs for our community members. PPPSW medical services have expanded in the past year to include gynecological surgeries for people with fibroids and urinary issues, along with implementation of Gender Affirming Hormonal Therapy.



**CEO – Joe Garbanzos**  
**Patients – 13,782**  
**Staff – 126**  
**Budget – \$12.7m**

Federal Districts – 51,52  
 State Senate – 39,40  
 State Assembly – 77,79,80

Founded in 1973, Samahan Health evolved from a free clinic designed provide culturally sensitive services to Filipino and Latino residents in downtown San Diego. Since that time, they have expanded to seven sites throughout San Diego County and offer a full range of medical, dental and behavioral health services. Samahan Health was received FQHC designation in 2013.



**Administrator – Dona James**  
**Patients – 4,281**  
**Staff – 36**  
**Budget – \$5.7m**

Federal District – 53  
 State Senate – 39  
 State Assembly – 78

SDAIC was founded in 1979 to provide access to community-based health care for urban American Indians that was rooted in traditional cultural values. Since that time, SDAIHC has been designated as a FQHC and welcomes all patients regardless of ethnic background or tribal affiliations to its expanded campus in San Diego County.


**SAN DIEGO FAMILY CARE**  
A California Non-Profit Corporation
**CEO – Roberta Feinberg**
**Patients – 27,621**
**Staff – 173**
**Budget – \$22m**

Federal Districts – 51,53

State Senate – 39,40

State Assembly – 78,80

Established in 1972, San Diego Family Care operates nine clinic sites in San Diego County, including three school-based clinics inside elementary and middle schools. They offer a full range of medical, dental and behavioral health services. Nearly 30% of the patient population served are children.


**SAN YSIDRO  
HEALTH**
**CEO – Kevin Mattson**
**Patients – 94,225**
**Staff – 998**
**Budget – \$149m**

 Federal Districts – 51,53  
 State Senate – 38,39,40  
 State Assembly – 71,79,80

San Ysidro Health was established in 1969 by several women in search of medical services for their children. Celebrating its 50th year, the clinic has expanded to 34 sites across San Diego County including a senior health center and one of California's eleven PACE (Program of All-inclusive Care for Elderly) programs.


**CEO – Carolina Manzano**
**Patients – 5,871**
**Staff – 120**
**Budget**

 Federal District – 51  
 State Senate – 40  
 State Assembly – 71

SIHC evolved from a satellite site of Indian Health Council of Pauma Valley. Five years later, SIHC incorporated and relocated to Barona until their permanent location was built in 1987. Today SIHC is a consortium serving seven tribes: Barona, Campo, Ewiiapaayp, Jamul, La Posta, Manzanita and Viejas and offers a range of medical, dental and social services for residents of rural San Diego County.



Federal District - 50  
 State Senate - 38  
 State Assembly - 71

**Deputy Director - Brianna Sandoval**

**Patients - 2,568**

**Staff - 55**

**Budget -**

The Sycuan Medical Dental Center is owned and operated by the Sycuan Band of the Kumeyaay Nation, a sovereign Native American tribe. The facility offers high quality health care services to the members of the Sycuan Band, other Native Americans, Sycuan employees, and the general public.



Federal Districts - 42, 49  
 State Senate - 28, 36  
 State Assembly - 67, 76

**CEO - Fernando Sanudo**

**Patients - 65,781**

**Staff - 440**

**Budget - \$58m**

VCC first opened in the basement of a local animal shelter in 1972. Since then, the health center has expanded to eight sites in San Diego, Riverside and Orange Counties. VCC was designated FQHC in 2002 and offers a variety of family empowerment opportunities. To increase access to oral health services, VCC operates a mobile dental unit.



HEALTH CENTER PARTNERS  
of Southern California

3710 Ruffin Road  
San Diego, CA 92123  
619.542.4300  
[www.HCPSOCAL.org](http://www.HCPSOCAL.org)

@HCPSOCAL  
#ValueCHCs

