

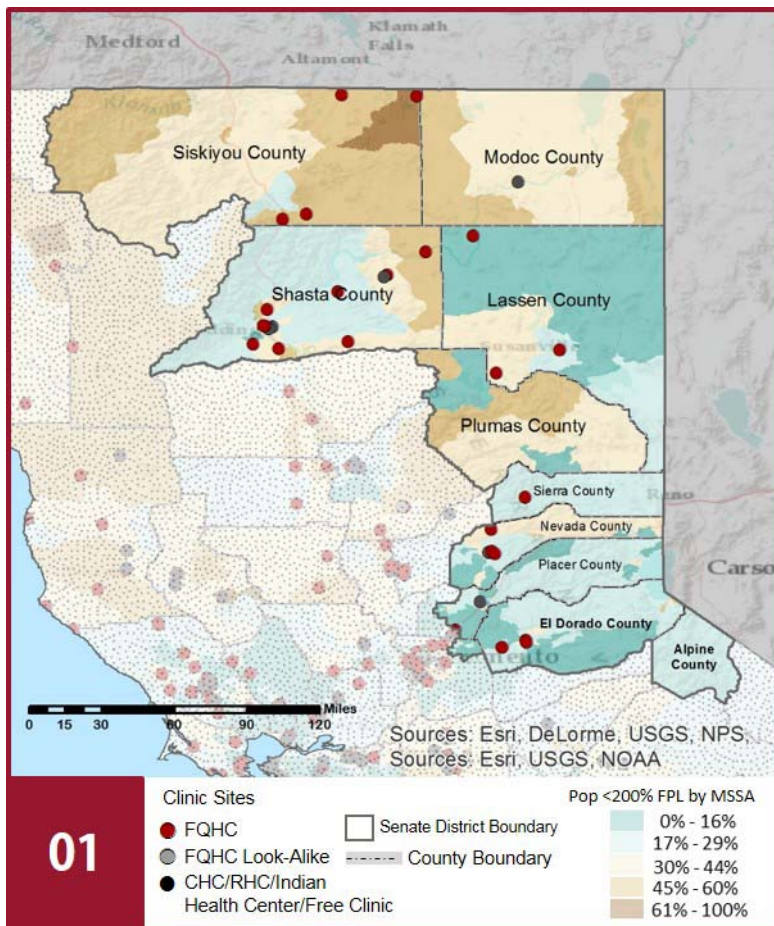
# CALIFORNIA COMMUNITY HEALTH CENTERS

2018 | Senate District  
Senator



## The Clinics

Community Clinics and Health Centers (CCHCs) are nonprofit health care practices located in low income and medically underserved areas. CCHCs share a common mission to serve everyone who walks through their doors, regardless of their ability to pay. The term CCHC include Federally Qualified Health Centers (FQHC), FQHC Look-Alikes, Migrant Health Centers, Rural and Frontier Health Centers, and Free Clinics. CCHCs are an essential segment of the safety net. In many California Counties, they provide a significant proportion of comprehensive primary care services to those who are publicly subsidized or uninsured.



## Clinic Types

Total Number of CCHCs  
Federally Qualified Health Center sites  
Federally Qualified Health Center Look-Alike sites  
95-210 Rural Health Center sites

## The Patients Demographics

Patients  
Female  
Male  
19 Years & Under  
Encounters

## Poverty Levels

Under 100%  
100-138%  
139-200%  
201-400%  
Above 400%  
Unknown

## Race

White (including Hispanic)  
Black  
Native American  
Asian/ Pacific Islander  
More Than One Race  
Other/ Unknown

## Ethnicity

Hispanic  
Non-Hispanic  
Unknown

## Age

Less than 1 Year  
1 - 4 Years  
5 - 12 Years  
13 - 14 Years  
15 - 19 Years  
20 - 34 Years  
35 - 44 Years  
45 - 64 Years  
Over 65 Years

## Language

Primary Language Not English

## Migratory Workers

Patients  
Encounters

californiahealth<sup>+</sup> advocates

ADVANCING THE MISSION OF COMMUNITY HEALTH CENTERS

(916) 503-9130  
healthplusadvocates.org  
1231 I Street, Suite 400, Sacramento, CA 95814

# CALIFORNIA COMMUNITY HEALTH CENTERS

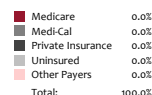
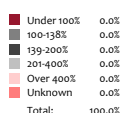
2018 | Senate District  
Senator



**Poverty Level**  
Patients

**Services**  
Visits

**Payment Source**  
Visits



## The Services

## Health Centers providing other significant services

Medical\*  
Dental\*  
Mental Health \*\*\*  
Other\*\*\*

**Total**

Provider FTEs

Encounters

Vision Services  
Basic Lab Services  
Radiology Services  
Pharmacy Services  
Urgent Care Services  
Substance Abuse Services  
Womens Health Services

\*Physicians, physician assistants, family nurse practitioners, certified nurse midwives, visiting nurses. \*\*Dentists and Registered Dental Hygienists  
\*\*\*Psychiatrists, clinical psychologists, and licensed clinical social workers. \*\*\*\*Other providers billable to Medi-Cal

## Revenue and Utilization by Payment Source

**Program**

Patients ^ ^

Encounters

**Revenue**

Medicare  
Medi-Cal  
Private Insurance  
Uninsured Services ^ ^ ^ ^  
All County ^ ^ ^  
Covered California  
PACE Patients  
Other  
BCCCP ^ ^  
CHDP ^ ^  
Family PACT ^ ^

Gross Patient Revenue  
Net Patient Revenue  
**Other Operating Revenue**  
Federal  
State  
County/Local  
Private  
Donations/Contributions  
Other

**Total Operating Revenue**

^ ^ Patient counts for Episodic programs (BCCP, CHDP, Family PACT) are duplicated. BCCCP = Breast and Cervical Cancer Control Program; CHDP = Child Health and Disability Prevention Program;  
Family PACT = Family Planning Access Care and Treatment program.  
^ ^ ^ County Indigent/CMSP/MISP, San Diego County Medical Plan, LA County Public/Private Partnership, and Other County Programs.  
^ ^ ^ ^ Free and Self-Pay/ Sliding Fee Programs.

Because of their philosophy and by necessity, CCHCs have been vigilant about controlling the cost of care, and the untoward effects of deferred or neglected care, by promoting a broad range of preventive health services specifically targeted to the particular needs of their communities and patient populations. The federal Office of Management and Budget has found the Health Center Program to be one of the ten most effective federal programs and the most effective program under the federal Health and Human Services Agency. Despite enormous challenges, CCHCs have persisted in their mission to serve their local communities.

All information compiled by Jeanita Harris, Sr. Data Analyst, CPCA. Numbers are based on 2016 OSHPD data.