

California Community Clinics and Health Centers

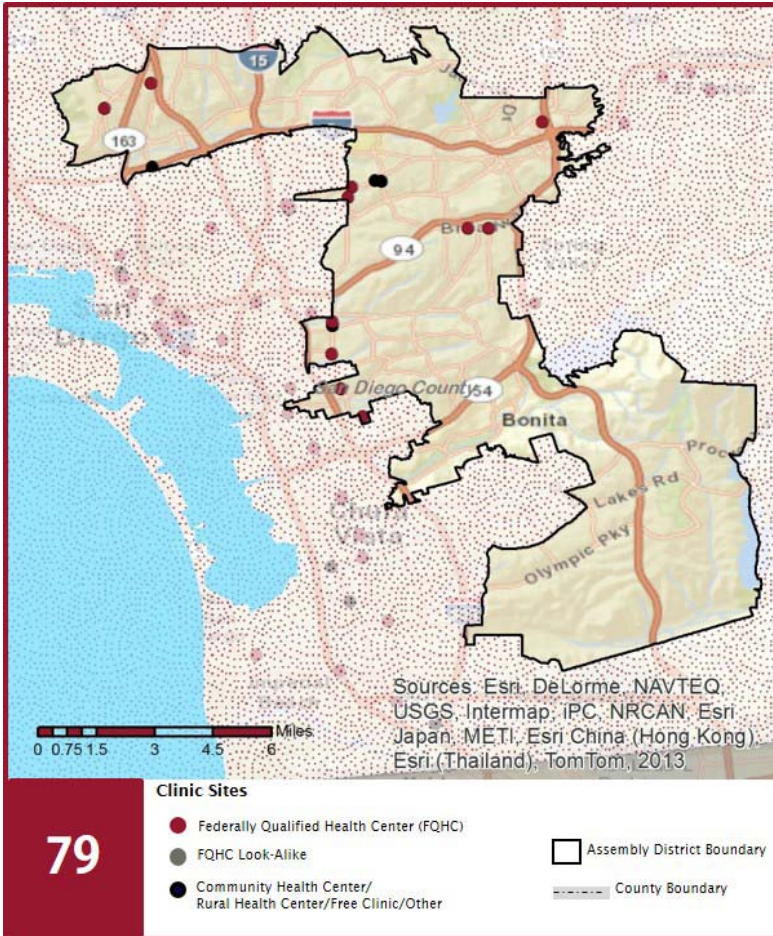
2016

Assembly District 79
Assemblymember Shirley N. Weber



The Clinics

Community Clinics and Health Centers (CCHCs) are nonprofit health care practices located in low income and medically underserved areas. CCHCs share a common mission to serve everyone who walks through their doors, regardless of their ability to pay. The term CCHC include Federally Qualified Health Centers (FQHC), FQHC Look-Alikes, Migrant Health Centers, Rural and Frontier Health Centers, and Free Clinics. CCHCs are an essential segment of the safety net. In many California Counties, they provide a significant proportion of comprehensive primary care services to those who are publicly subsidized or uninsured.



Clinic Types

Total Number of CCHCs	15
Federally Qualified Health Center sites	11
Federally Qualified Health Center Look-Alike sites	0
95-210 Rural Health Center sites	0

The Patients

Demographics

Patients	89,132	
Female	59,506	67%
Male	29,626	33%
19 Years & Under	27,620	31%
Encounters	271,946	

Poverty Levels

Under 100%	61,385	69%
100-200%	13,516	15%
Above 200%	2,427	3%
Unknown	11,804	13%

Age

Race			Ethnicity			Age		
						Male	Female	
White	52,130	58%	Hispanic	41,303	46%	Less than 1 Year	1,118	1,104
Black	10,517	12%	Non-Hispanic	40,088	45%	1 - 4 Years	3,117	3,019
Native American	570	1%	Unknown	7,741	9%	5 - 12 Years	4,689	4,495
Asian/ Pacific Islander	8,254	9%				13 - 14 Years	925	1,073
More Than One Race	1,111	1%				15 - 19 Years	2,384	5,696
Other/ Unknown	16,550	19%				20 - 34 Years	6,232	23,675
						35 - 44 Years	3,085	7,262
						45 - 64 Years	6,756	10,981
						Over 65 Years	1,320	2,201
Language			Migratory Workers					
Primary Language Not English		36%	Patients	406	0%			
			Encounters	1,504	1%			

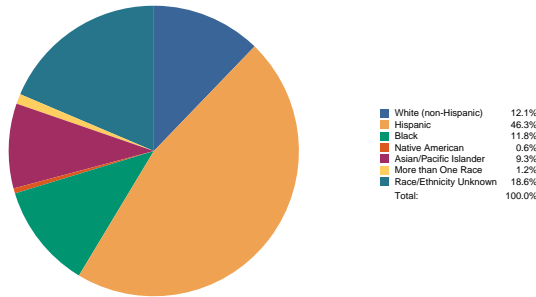
California Community Clinics and Health Centers

2016

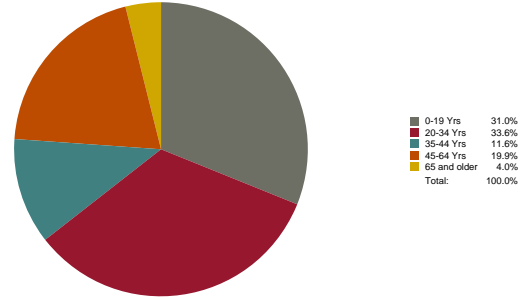
Assembly District 79
Assemblymember Shirley N. Weber



Race/Ethnicity
Patients



Age
Patients



The Services

	Provider FTEs		Encounters	
Medical *	55	53%	200,222	74%
Dental **	26	25%	43,753	16%
Mental Health ***	11	11%	17,157	6%
Other****	25	24%	10,814	4%
Total	104		271,946	

*Physicians, physician assistants, family nurse practitioners, certified nurse midwives, visiting nurses.
 **Dentists and Registered Dental Hygienists
 ***Psychiatrists, clinical psychologists, and licensed clinical social workers.
 ****Other providers billable to Medi-Cal

Total CCHCs that provide the following services

Vision Services	0
Basic Lab Services	9
Radiology Services	1
Pharmacy Services	2
Urgent Care Services	0
Womens Health Services	10
Substance Abuse Services	3
Domestic Violence Services	1

Revenue and Utilization by Payment Source

Program	Patients ^ ^		Encounters		Revenue	
	Count	%	Count	%	Category	Amount
Medicare	3,721	4%	15,456	6%	Gross Patient Revenue	\$60,319,466
Medi-Cal	50,867	57%	180,565	66%	Net Patient Revenue	\$44,660,732
All County ^ ^ ^	200	0%	679	0%	Other Operating Revenue	
PACE Patients	0	0%	0	0%	Federal	\$4,778,726
Private Insurance	3,881	4%	9,404	3%	State	\$122,034
Uninsured Services ^ ^ ^ ^	29,395	33%	26,259	10%	County/Local	\$64,015
Other	1,068	1%	1,644	1%	Private	\$1,176,822
BCCCP ^ ^	1,173	1%	1,582	1%	Donations/Contributions	\$48,470
CHDP ^ ^	2,730	3%	4,213	2%	Other	\$2,216,069
Family PACT ^ ^	15,205	17%	32,144	12%		

Because of their philosophy and by necessity, CCHCs have been vigilant about controlling the cost of care, and the untoward effects of deferred or neglected care, by promoting a broad range of preventive health services specifically targeted to the particular needs of their communities and patient populations. The federal Office of Management and Budget has found the Health Center Program to be one of the ten most effective federal programs and the most effective program under the federal Health and Human Services Agency. Despite enormous challenges, CCHCs have persisted in their mission to serve their local communities.

All information compiled by Jeanita Harris, Sr. Data Analyst, CPCA. Numbers are based on 2014 OSHPD data.

^ ^ Patient counts for Episodic programs (BCCP, CHDP, Family PACT) are duplicated. BCCCP = Breast and Cervical Cancer Control Program; CHDP = Child Health and Disability Prevention Program; Family PACT = Family Planning Access Care and Treatment program.
 ^ ^ ^ County Indigent/CMSP/MISP, San Diego County Medical Plan, LA County Public/Private Partnership, and Other County Programs.
 ^ ^ ^ ^ Free and Self-Pay/ Sliding Fee Programs.