

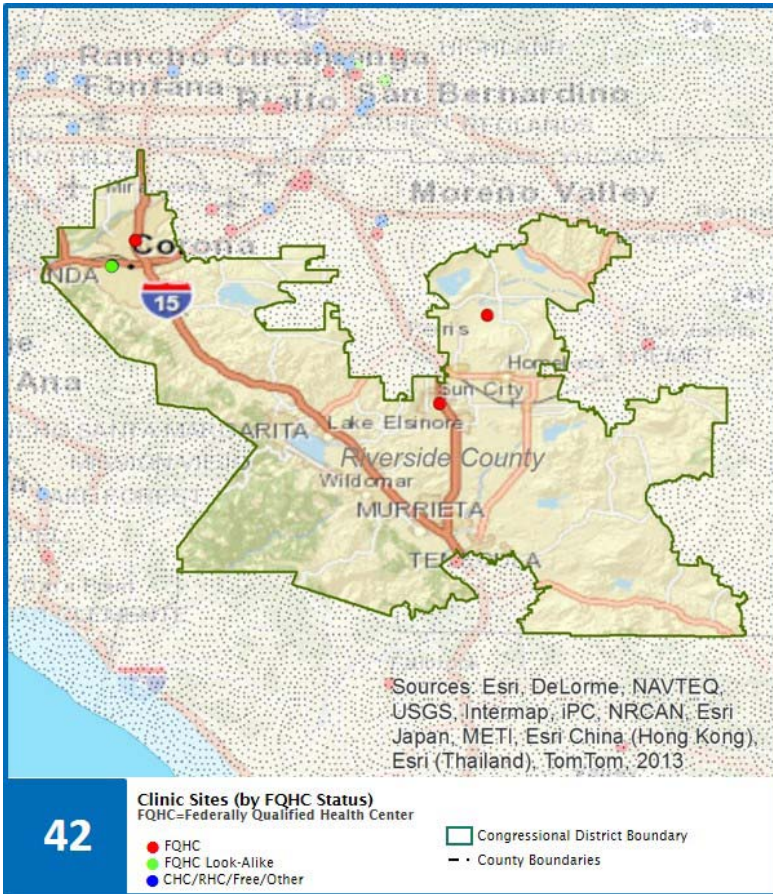
California Congressional District 42

Representative Ken Calvert

Profile of Community Clinics and Health Centers (CCHCs)

The Clinics

Community Clinics and Health Centers (CCHCs) are nonprofit health care practices located in low income and medically underserved areas. CCHCs share a common mission to serve everyone who walks through their doors, regardless of their ability to pay. The term CCHC include Federally Qualified Health Centers (FQHC), FQHC Look-Alikes, Migrant Health Centers, Rural and Frontier Health Centers, and Free Clinics. CCHCs are an essential segment of the safety net. In many California Counties, they provide a significant proportion of comprehensive primary care services to those who are publicly subsidized or uninsured.



Clinic Types

Total Number of CCHCs	4
Federally Qualified Health Center sites	3
Federally Qualified Health Center Look-Alike sites	1
95-210 Rural Health Center sites	1

The Services

	Provider FTEs	Encounters
Medical*	5.6	17,660
Dental **	2.6	7,724
Mental Health ***	0.1	173
Other ****	0.0	0
Total	8.3	25,557

*Physicians, physician assistants, family nurse practitioners, certified nurse midwives, visiting nurses.

**Dentists and Registered Dental Hygienists

***Psychiatrists, clinical psychologists, and licensed clinical social workers.

****Other providers billable to Medi-Cal

Other Services Provided

Vision Services	0	Urgent Care Services	0
Basic Lab Services	2	Womens Health Services	1
Radiology Services	1	Substance Abuse Services	0
Pharmacy Services	0	Domestic Violence Services	0

The Patients

Demographics

Patients	9,568
Female	6,078 64%
Male	3,490 36%
19 Years & Under	5,765 60%
Encounters/Visits	25,557

Poverty Levels

Under 100%	7,957	83%
100-200%	1,015	11%
Above 200%	61	1%
Unknown	535	6%

Ethnicity

Hispanic	7,874	82%
Non-Hispanic	1,511	16%
Unknown	183	2%

Race (including Hispanic)

White	8,046	84%
Black	243	3%
Native American	139	1%
Asian/ Pacific Islander	107	1%
More Than One Race	69	1%
Other/ Unknown	964	10%

Age

Less than 1 Year	739	8%
1 - 4 Years	1,654	17%
5 - 12 Years	1,953	20%
13 - 14 Years	516	5%
15 - 19 Years	903	9%
20 - 34 Years	1,469	15%
35 - 44 Years	998	10%
45 - 64 Years	1,030	11%
Over 65 Years	306	3%

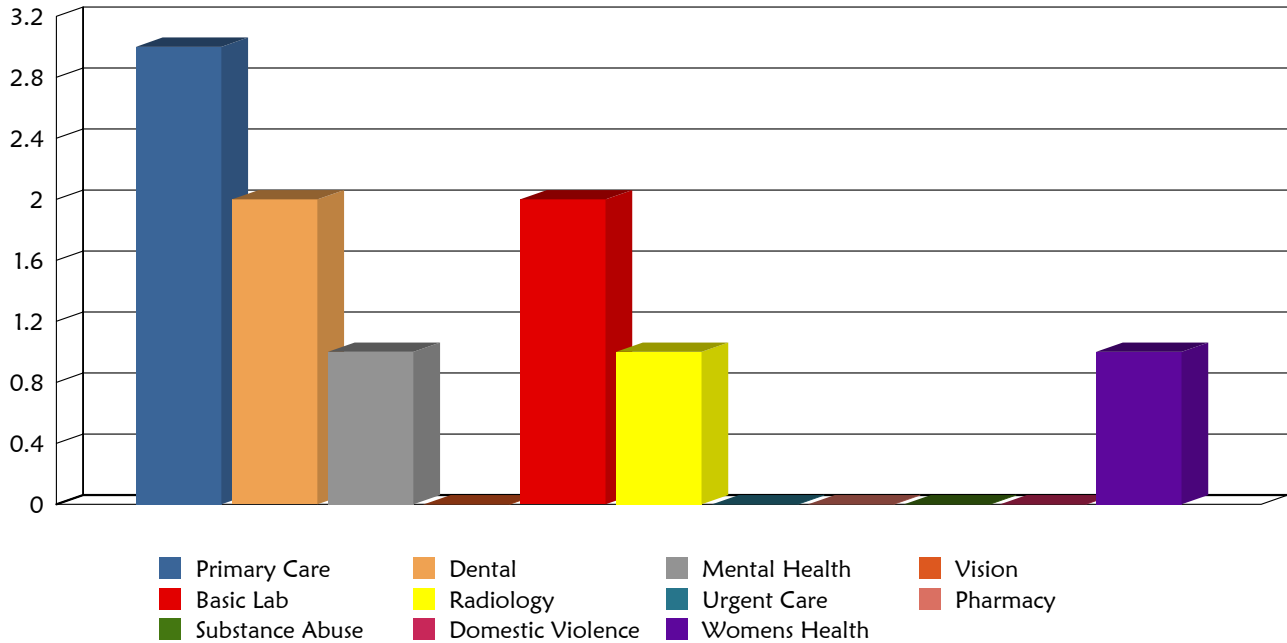
Migratory Workers

Patients	100	1%
Encounters/Visits	315	1%

Language

Primary Language Not English	74%
------------------------------	-----

Total Health Centers Providing Services



Revenue and Utilization by Payment Source

Program	Patients ^ ^	Encounters	Patient Revenue
Medicare	226 2%	1,120 4%	Gross Patient Revenue (charged) \$4,349,918
Medi-Cal	6,987 73%	15,709 61%	Write-offs and Adjustments \$1,101,192
All County ^ ^ ^	2 0%	8 0%	Net Patient Revenue (collected) \$3,248,726
PACE Patients			Other Operating Revenue
Private Insurance	161 2%	339 1%	Federal Funding/Grants \$1,453,505
Uninsured Services ^ ^ ^ ^	2,186 23%	4,409 17%	State Funding/Grants \$185
Other	6 0%	13 0%	County/Local \$0
BCCCP ^ ^	102 1%	109 0%	Private \$30,159
CHDP ^ ^	1,856 19%	1,862 7%	Donations/Contributions \$46
Family PACT ^ ^	1,967 21%	1,988 8%	Other \$23

^^ Patient counts for Episodic programs (BCCP, CHDP, EAPC, Family PACT) may be duplicated. BCCCP = Breast and Cervical Cancer Control Program; CHDP = Child Health and Disability Prevention Program; Family PACT = Family Planning Access Care and Treatment program.
 ^^^ County Indigent/CMSP/MISP, San Diego County Medical Plan, LA County Public/Private Partnership, and Other County Programs.
 ^^^^ Free and Self-Pay/ Sliding Fee Programs.

Because of their philosophy and by necessity, CCHCs have been vigilant about controlling the cost of care, and the untoward effects of deferred or neglected care, by promoting a broad range of preventive health services specifically targeted to the particular needs of their communities and patient populations. The federal Office of Management and Budget has found the Health Center Program to be one of the ten most effective federal programs and the most effective program under the federal Health and Human Services Agency. Despite enormous challenges, CCHCs have persisted in their mission to serve their local communities.

All information compiled by Jeanita Harris, Sr. Data Analyst, CPCA. Numbers are based on 2014 OSHPD data.