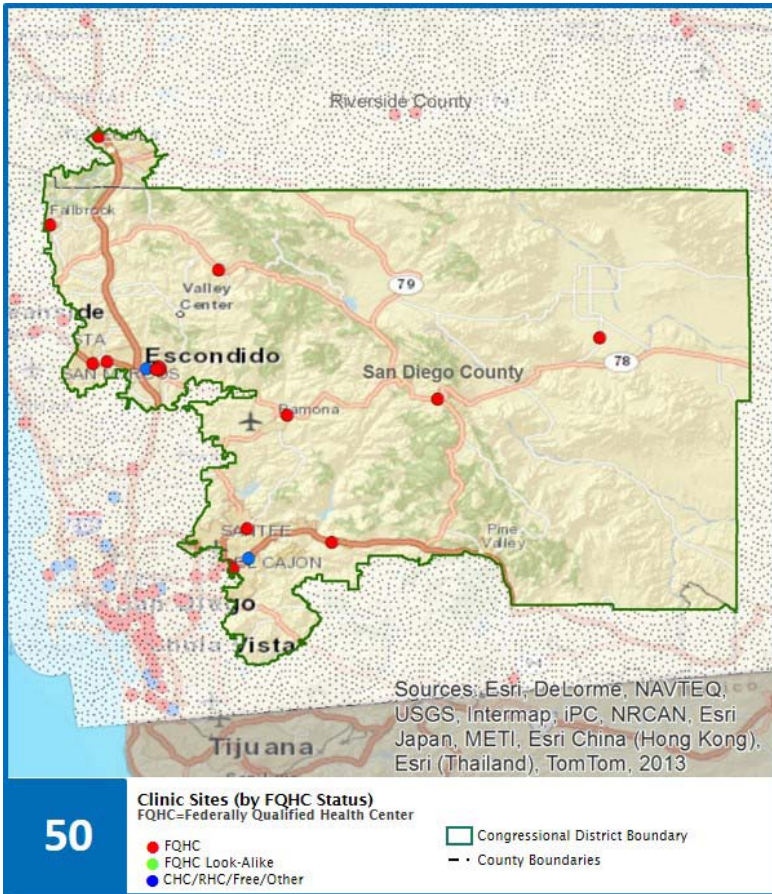


California Congressional District 50 Representative Duncan D. Hunter Profile of Community Clinics and Health Centers (CCHCs)

The Clinics

Community Clinics and Health Centers (CCHCs) are nonprofit health care practices located in low income and medically underserved areas. CCHCs share a common mission to serve everyone who walks through their doors, regardless of their ability to pay. The term CCHC include Federally Qualified Health Centers (FQHC), FQHC Look-Alikes, Migrant Health Centers, Rural and Frontier Health Centers, and Free Clinics. CCHCs are an essential segment of the safety net. In many California Counties, they provide a significant proportion of comprehensive primary care services to those who are publicly subsidized or uninsured.



Clinic Types

Total Number of CCHCs	21
Federally Qualified Health Center sites	19
Federally Qualified Health Center Look-Alike sites	0
95-210 Rural Health Center sites	3

The Services

	Provider FTEs	Encounters
Medical*	80.1	336,262
Dental **	19.2	60,819
Mental Health ***	12.5	22,581
Other ****	14.8	24,819
Total	126.6	444,481

*Physicians, physician assistants, family nurse practitioners, certified nurse midwives, visiting nurses.

**Dentists and Registered Dental Hygienists

***Psychiatrists, clinical psychologists, and licensed clinical social workers.

****Other providers billable to Medi-Cal

Other Services Provided

Vision Services	1	Urgent Care Services	2
Basic Lab Services	12	Womens Health Services	13
Radiology Services	2	Substance Abuse Services	2
Pharmacy Services	5	Domestic Violence Services	0

The Patients

Demographics

Patients	139,363
Female	90,219 65%
Male	49,144 35%
19 Years & Under	47,557 34%
Encounters/Visits	444,481

Poverty Levels

Under 100%	102,066	73%
100-200%	22,672	16%
Above 200%	3,704	3%
Unknown	10,921	8%

Ethnicity

Hispanic	75,752	54%
Non-Hispanic	54,957	39%
Unknown	8,654	6%

Race (including Hispanic)

White	96,689	69%
Black	3,804	3%
Native American	533	0%
Asian/ Pacific Islander	4,182	3%
More Than One Race	1,876	1%
Other/ Unknown	32,279	23%

Age

Less than 1 Year	3,784	3%
1 - 4 Years	10,564	8%
5 - 12 Years	17,313	12%
13 - 14 Years	3,547	3%
15 - 19 Years	12,349	9%
20 - 34 Years	39,788	29%
35 - 44 Years	16,836	12%
45 - 64 Years	28,174	20%
Over 65 Years	7,008	5%

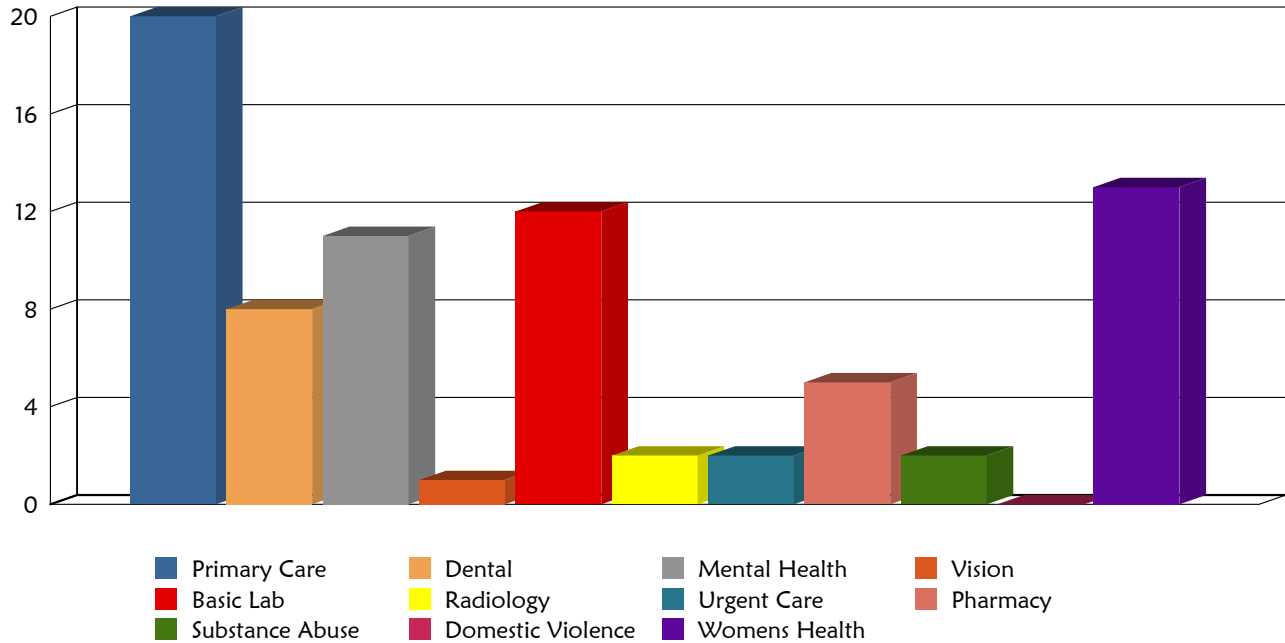
Migratory Workers

Patients	6,281	5%
Encounters/Visits	20,332	5%

Language

Primary Language Not English	38%
------------------------------	-----

Total Health Centers Providing Services



Revenue and Utilization by Payment Source

Program	Patients ^ ^		Encounters		Patient Revenue	
Medicare	6,779	5%	29,426	7%	Gross Patient Revenue (charged)	\$78,576,364
Medi-Cal	78,197	56%	292,313	66%	Write-offs and Adjustments	\$16,396,681
All County ^ ^ ^	101	0%	1,441	0%	Net Patient Revenue (collected)	\$62,179,683
					Other Operating Revenue	
PACE Patients					Federal Funding/Grants	\$8,021,014
Private Insurance	6,416	5%	15,980	4%	State Funding/Grants	\$46,829
Uninsured Services ^ ^ ^ ^	47,345	34%	52,959	12%	County/Local	\$363,823
Other	525	0%	1,429	0%	Private	\$985,015
BCCCP ^ ^	2,673	2%	4,203	1%	Donations/Contributions	\$115,046
CHDP ^ ^	1,772	1%	5,456	1%	Other	\$2,078,076
Family PACT ^ ^	20,612	15%	41,274	9%		

^^ Patient counts for Episodic programs (BCCP, CHDP, EAPC, Family PACT) may be duplicated. BCCCP = Breast and Cervical Cancer Control Program; CHDP = Child Health and Disability Prevention Program;

Family PACT = Family Planning Access Care and Treatment program.

^^^ County Indigent/CMSP/MISP, San Diego County Medical Plan, LA County Public/Private Partnership, and Other County Programs.

^^^^ Free and Self-Pay/ Sliding Fee Programs.

Because of their philosophy and by necessity, CCHCs have been vigilant about controlling the cost of care, and the untoward effects of deferred or neglected care, by promoting a broad range of preventive health services specifically targeted to the particular needs of their communities and patient populations. The federal Office of Management and Budget has found the Health Center Program to be one of the ten most effective federal programs and the most effective program under the federal Health and Human Services Agency. Despite enormous challenges, CCHCs have persisted in their mission to serve their local communities.

All information compiled by Jeanita Harris, Sr. Data Analyst, CPCA. Numbers are based on 2014 OSHPD data.