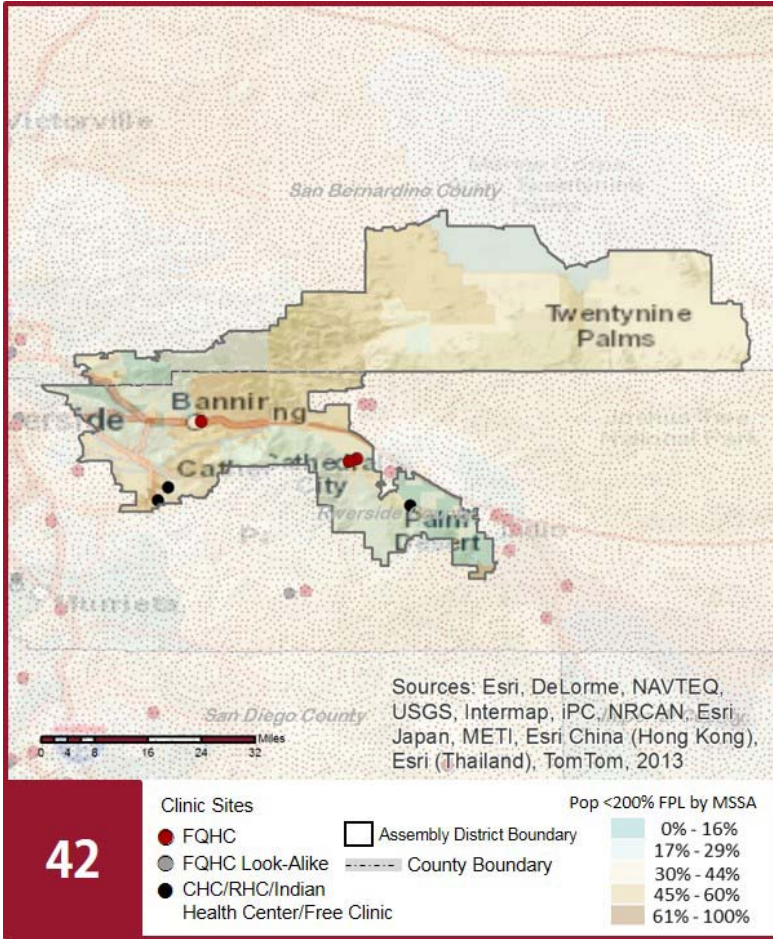




### The Clinics

Community Clinics and Health Centers (CCHCs) are nonprofit health care practices located in low income and medically underserved areas. CCHCs share a common mission to serve everyone who walks through their doors, regardless of their ability to pay. The term CCHC include Federally Qualified Health Centers (FQHC), FQHC Look-Alikes, Migrant Health Centers, Rural and Frontier Health Centers, and Free Clinics. CCHCs are an essential segment of the safety net. In many California Counties, they provide a significant proportion of comprehensive primary care services to those who are publicly subsidized or uninsured.



### Clinic Types

Total Number of CCHCs	6
Federally Qualified Health Center sites	3
Federally Qualified Health Center Look-Alike sites	0
95-210 Rural Health Center sites	0

### The Patients

#### Demographics

Patients	20,315	
Female	14,120	70%
Male	6,195	30%
19 Years & Under	3,857	19%
Encounters	74,866	

#### Poverty Levels

Under 100%	9,617	47%
100-138%	2,334	11%
139-200%	1,538	8%
201-400%	517	3%
Above 400%	161	1%
Unknown	6,148	30%

42

Race			Ethnicity			Age		
White (including Hispanic)	11,525	57%	Hispanic	8,401	41%	Less than 1 Year	122	1%
Black	753	4%	Non-Hispanic	9,345	46%	1 - 4 Years	528	3%
Native American	4,172	21%	Unknown	2,569	13%	5 - 12 Years	1,048	5%
Asian/ Pacific Islander	349	2%				13 - 14 Years	275	1%
More Than One Race	540	3%				15 - 19 Years	1,884	9%
Other/ Unknown	2,976	15%				20 - 34 Years	8,699	43%
						35 - 44 Years	2,697	13%
						45 - 64 Years	4,174	21%
						Over 65 Years	888	4%

### Migratory Workers

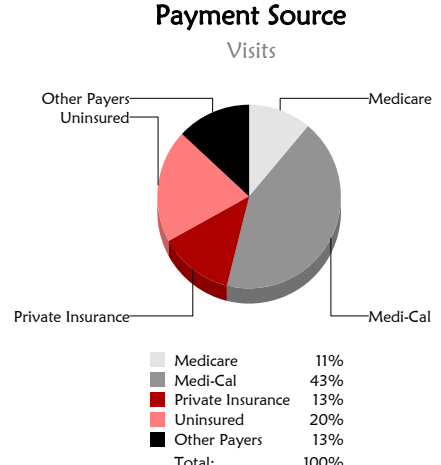
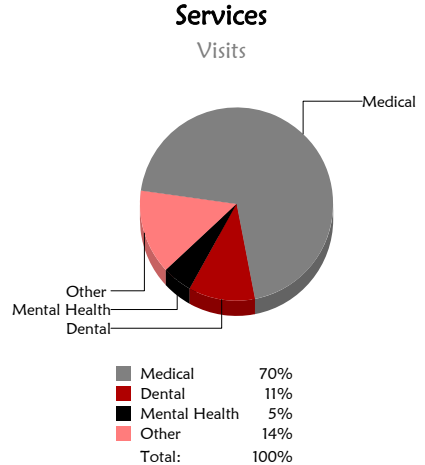
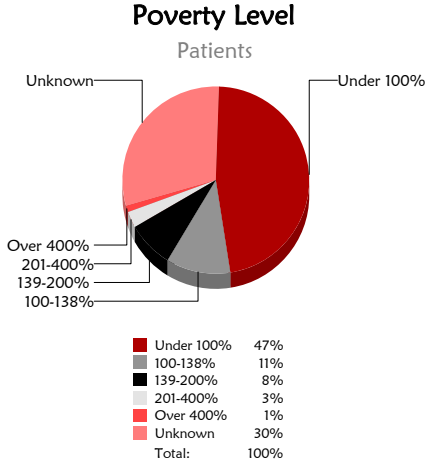
Patients	62	0%
Encounters	203	0%

### Language

Primary Language Not English	14%
------------------------------	-----

# California Community Clinics and Health Centers

## 2017 | Assembly District 42 Assemblymember Chad Mayes



### The Services

	Provider FTEs		Encounters	
Medical *	18	51%	51,710	69%
Dental **	6	16%	8,541	11%
Mental Health ***	5	15%	4,097	5%
Other****	6	18%	10,518	14%
<b>Total</b>	<b>35</b>		<b>74,866</b>	

- ### Top Community Services
- Education
  - Nutrition
  - Outreach
  - Transportation
  - Social Services

\*Physicians, physician assistants, family nurse practitioners, certified nurse midwives, visiting nurses. \*\*Dentists and Registered Dental Hygienists  
\*\*\*Psychiatrists, clinical psychologists, and licensed clinical social workers. \*\*\*\*Other providers billable to Medi-Cal

### Revenue and Utilization by Payment Source

Program	Patients ^ ^		Encounters	
Medicare	933	5%	7,980	11%
Medi-Cal	8,948	44%	32,134	43%
All County ^ ^ ^	44	0%	409	1%
Covered California	70	0%	111	0%
PACE Patients	0	0%	0	0%
Private Insurance	3,687	18%	9,500	13%
Uninsured Services ^ ^ ^ ^	6,423	32%	14,954	20%
Other	210	1%	435	1%
BCCCP ^ ^	0	0%	0	0%
CHDP ^ ^	0	0%	0	0%
Family PACT ^ ^	4,743	23%	9,343	12%

### Revenue

Gross Patient Revenue	\$14,687,861
Net Patient Revenue	\$9,130,043

### Other Operating Revenue

Federal	\$6,668,212
State	\$55,497
County/Local	\$101,528
Private	\$242,739
Donations/Contributions	\$39,867
Other	\$202

^ ^ Patient counts for Episodic programs (BCCP, CHDP, Family PACT) are duplicated. BCCCP = Breast and Cervical Cancer Control Program; CHDP = Child Health and Disability Prevention Program; Family PACT = Family Planning Access Care and Treatment program.  
^ ^ ^ County Indigent/CMS/MISP, San Diego County Medical Plan, LA County Public/Private Partnership, and Other County Programs.  
^ ^ ^ ^ Free and Self-Pay/ Sliding Fee Programs.

Because of their philosophy and by necessity, CCHCs have been vigilant about controlling the cost of care, and the untoward effects of deferred or neglected care, by promoting a broad range of preventive health services specifically targeted to the particular needs of their communities and patient populations. The federal Office of Management and Budget has found the Health Center Program to be one of the ten most effective federal programs and the most effective program under the federal Health and Human Services Agency. Despite enormous challenges, CCHCs have persisted in their mission to serve their local communities.

All information compiled by Jeanita Harris, Sr. Data Analyst, CPCA. Numbers are based on 2015 OSHPD data.