

Riverside County – Supervisor District 1

Supervisor Kevin Jeffries

Kevin Jeffries was elected in November 2012 to represent the residents of the 1st Supervisorial District on the Riverside County Board of Supervisors. This district covers the cities of Riverside, Lake Elsinore, Canyon Lake, and Wildomar, and unincorporated communities including Woodcrest, Lake Mathews, Mead Valley, Temescal Valley, Good Hope, Lakeland Village, El Cariso, Meadowbrook, La Cresta, and DeLuz.



A resident of Riverside County since 1971 (with family ties to Riverside County dating back to 1944), Kevin is a successful local small business owner who has owned and operated his investment businesses in Riverside County for 30 years.

In 1977 Kevin began what would become a long and recognized history of public service starting with 29 years and over 4000 emergency responses as a Volunteer Fire Captain for the Riverside County Fire Department. Kevin specialized in emergency incident resource planning and coordination for large scale emergency incidents in Riverside County. Kevin also served five years as the President of the 700 member Riverside County Volunteer Firefighters Association.

In 1980, Kevin was elected to a local Park & Recreation District Board of Directors. His dedication to parks was further recognized in 1982 when he was appointed by the Riverside County Board of Supervisors to a county wide Parks Advisory Commission.

In 1990, voters elected Kevin to the Elsinore Valley Municipal Water District Board of Directors. During his service he was a fierce advocate for holding down water and sewer rates, investing in essential infrastructure replacement while controlling unnecessary spending. Kevin also worked to help small businesses by serving on local Chamber of Commerce and economic development boards and committees. Kevin was also very active in seeking state and federal grants to improve his local community, successfully obtaining grants for fire & rescue equipment, water mains, fire hydrants and to add a critically needed center turn lane down a long stretch of Grand Ave in unincorporated Lakeland Village.

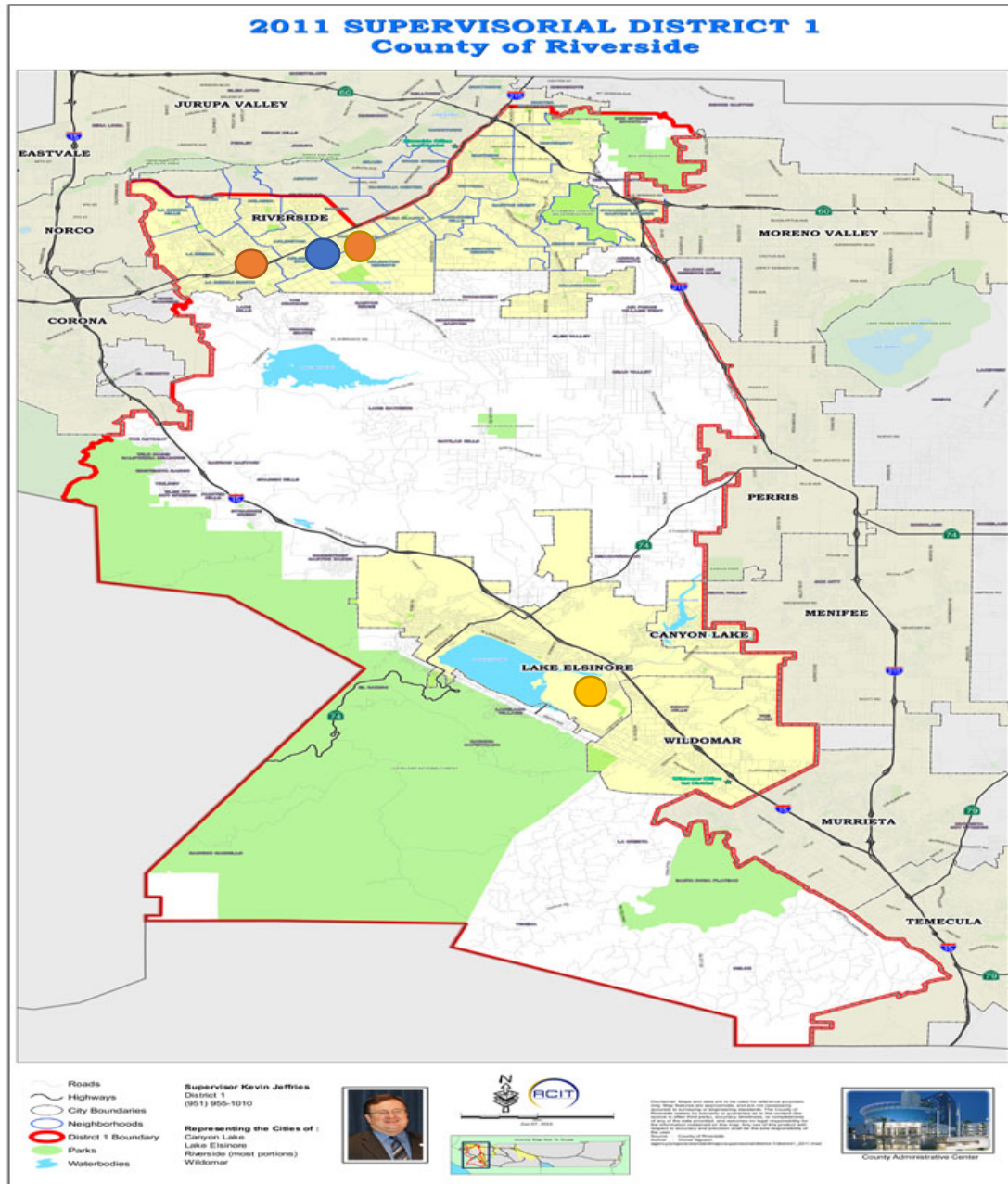
In 1998, Kevin was elected to the Western Municipal Water District Board of Directors where he continued as an advocate for ratepayers and fiscally conservative policies. In 2002 Kevin was unanimously elected by representatives of special districts throughout Riverside County to serve on the Riverside County Local Agency Formation Commission (LAFCO). Kevin continued his service with various boards, commissions (including several non-profits), and the fire service until late 2006.

In November 2006, Kevin was elected to represent much of Western Riverside County in the California State Assembly, where his focus was working to reform the state's hostile environment towards small businesses and restore private sector jobs, helping improve our local transportation infrastructure, and advocating for adequate public safety services. Frustrated by the paralyzing partisanship in Sacramento, Kevin successfully ran for County Supervisor in November 2012.



A native Californian, Kevin and his wife Christina reside in unincorporated Lake Elsinore (Lakeland Village) and have two adult children.

Riverside County – Supervisor District 1

The 1st District includes about 450,000 residents and encompasses the cities of Wildomar, Lake Elsinore, Canyon Lake and most of the City of Riverside. The district also covers the unincorporated communities of Gavilan Hills, Good Hope, Lake Hills, Lake Mathews, Mead Valley, Meadowbrook, Temescal Valley, Woodcrest, Tenaja, DeLuz, LaCresta, Warm Springs, Lakeland Village, and Spring Hills.



HCP MEMBERS IN DISTRICT

- Vista Community Clinic 
- Borrego community Health Foundation 
- Community Health Systems, Inc 