

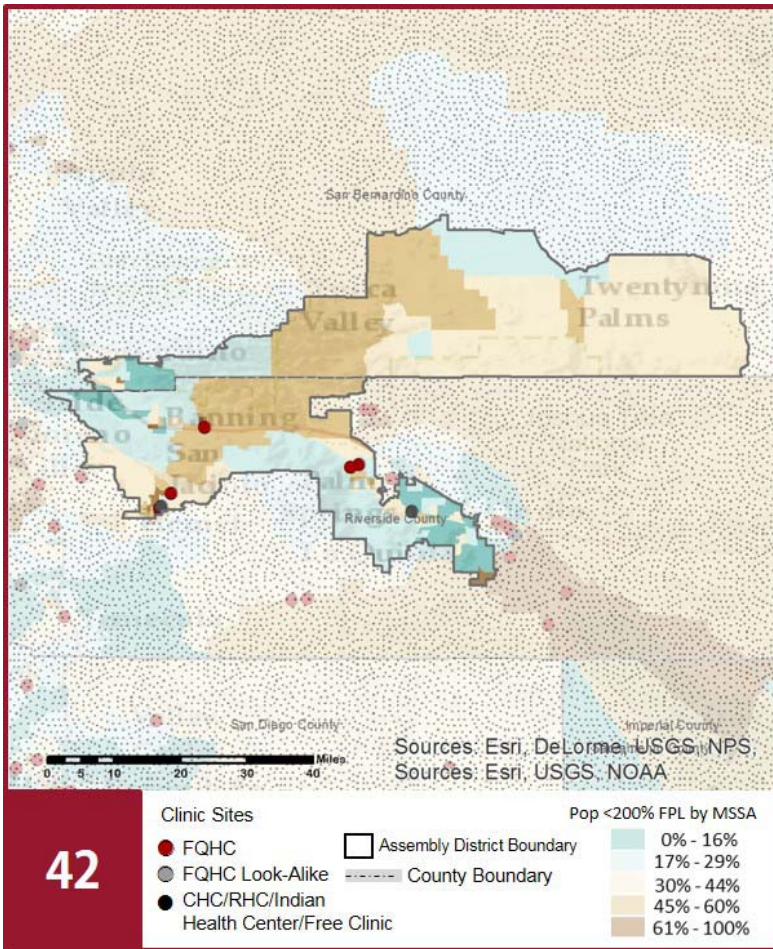
CALIFORNIA COMMUNITY HEALTH CENTERS

2018 | Assembly District 42
 Assemblymember Chad Mayes



The Clinics

Community Clinics and Health Centers (CCHCs) are nonprofit health care practices located in low income and medically underserved areas. CCHCs share a common mission to serve everyone who walks through their doors, regardless of their ability to pay. The term CCHC include Federally Qualified Health Centers (FQHC), FQHC Look-Alikes, Migrant Health Centers, Rural and Frontier Health Centers, and Free Clinics. CCHCs are an essential segment of the safety net. In many California Counties, they provide a significant proportion of comprehensive primary care services to those who are publicly subsidized or uninsured.



Clinic Types

Total Number of CCHCs	8
Federally Qualified Health Center sites	6
Federally Qualified Health Center Look-Alike sites	0
95-210 Rural Health Center sites	0

The Patients

Demographics

Patients	24,627	
Female	16,590	67%
Male	8,037	33%
19 Years & Under	4,081	17%
Encounters	77,803	

Poverty Levels

Under 100%	13,976	57%
100-138%	2,484	10%
139-200%	2,120	9%
201-400%	1,339	5%
Above 400%	992	4%
Unknown	3,716	15%

42

Race			Ethnicity			Age		
White (including Hispanic)	14,391	58%	Hispanic	10,669	43%	Less than 1 Year	159	1%
Black	1,142	5%	Non-Hispanic	11,379	46%	1 - 4 Years	577	2%
Native American	3,965	16%	Unknown	2,579	10%	5 - 12 Years	1,184	5%
Asian/ Pacific Islander	478	2%				13 - 14 Years	289	1%
More Than One Race	224	1%				15 - 19 Years	1,872	8%
Other/ Unknown	4,427	18%				20 - 34 Years	10,481	43%
						35 - 44 Years	3,461	14%
						45 - 64 Years	5,418	22%
						Over 65 Years	1,186	5%

Migratory Workers

Patients	115	0%
Encounters	403	1%

Language

Primary Language Not English	13%
------------------------------	-----

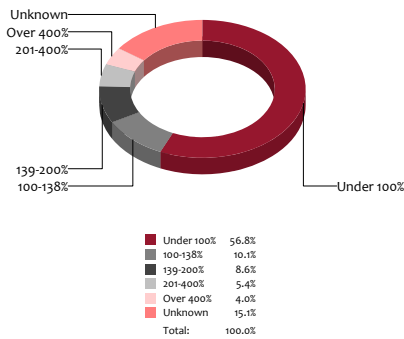
CALIFORNIA COMMUNITY HEALTH CENTERS

2018 | Assembly District 42
Assemblymember Chad Mayes



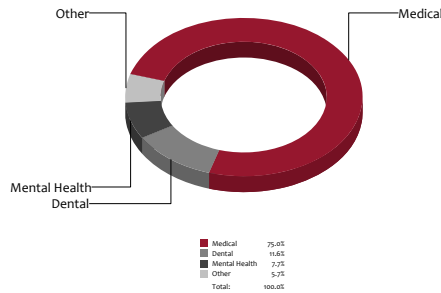
Poverty Level

Patients



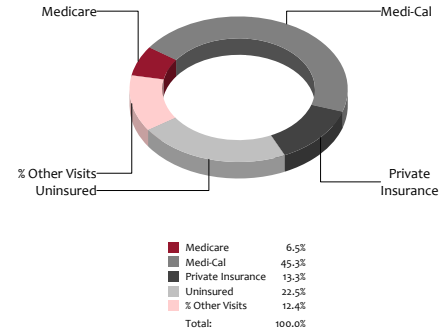
Services

Visits



Payment Source

Visits



The Services

	Provider FTEs		Encounters	
Medical*	20.1	54%	58,357	75%
Dental*	6.6	18%	9,022	12%
Mental Health ***	6.5	17%	5,987	8%
Other***	4.1	11%	4,437	6%
Total	37		77,803	

Health Centers providing other significant services

Vision Services	1	13%
Basic Lab Services	5	63%
Radiology Services	1	13%
Pharmacy Services	3	38%
Urgent Care Services	0	0%
Substance Abuse Services	2	25%
Womens Health Services	5	63%

*Physicians, physician assistants, family nurse practitioners, certified nurse midwives, visiting nurses. **Dentists and Registered Dental Hygienists
Psychiatrists, clinical psychologists, and licensed clinical social workers. *Other providers billable to Medi-Cal

Revenue and Utilization by Payment Source

Program	Patients ^ ^		Encounters		Revenue	
Medicare	1,196	5%	5,087	7%	Gross Patient Revenue	\$18,244,418
Medi-Cal	12,206	50%	35,224	45%	Net Patient Revenue	\$10,629,222
Private Insurance	4,266	17%	10,329	13%	Other Operating Revenue	
Uninsured Services ^ ^ ^ ^	6,860	28%	17,534	23%	Federal	\$8,458,542
All County ^ ^ ^	0	0%	0	0%	State	\$75,645
Covered California	96	0%	158	0%	County/Local	\$274,840
PACE Patients	0	0%	0	0%	Private	\$568,971
Other	3	0%	3	0%	Donations/Contributions	\$86,882
BCCCP ^ ^	182	1%	238	0%	Other	\$11,610
CHDP ^ ^	15	0%	43	0%	Total Operating Revenue	
Family PACT ^ ^	4,766	19%	9,187	12%	\$ 20,105,712	

^ ^ Patient counts for Episodic programs (BCCP, CHDP, Family PACT) are duplicated. BCCCP = Breast and Cervical Cancer Control Program; CHDP = Child Health and Disability Prevention Program;
Family PACT = Family Planning Access Care and Treatment program.
^ ^ ^ County Indigent/CMSP/MISP, San Diego County Medical Plan, LA County Public/Private Partnership, and Other County Programs.
^ ^ ^ ^ Free and Self-Pay/ Sliding Fee Programs.

Because of their philosophy and by necessity, CCHCs have been vigilant about controlling the cost of care, and the untoward effects of deferred or neglected care, by promoting a broad range of preventive health services specifically targeted to the particular needs of their communities and patient populations. The federal Office of Management and Budget has found the Health Center Program to be one of the ten most effective federal programs and the most effective program under the federal Health and Human Services Agency. Despite enormous challenges, CCHCs have persisted in their mission to serve their local communities.

All information compiled by Jeanita Harris, Sr. Data Analyst, CPCA. Numbers are based on 2016 OSHPD data.