

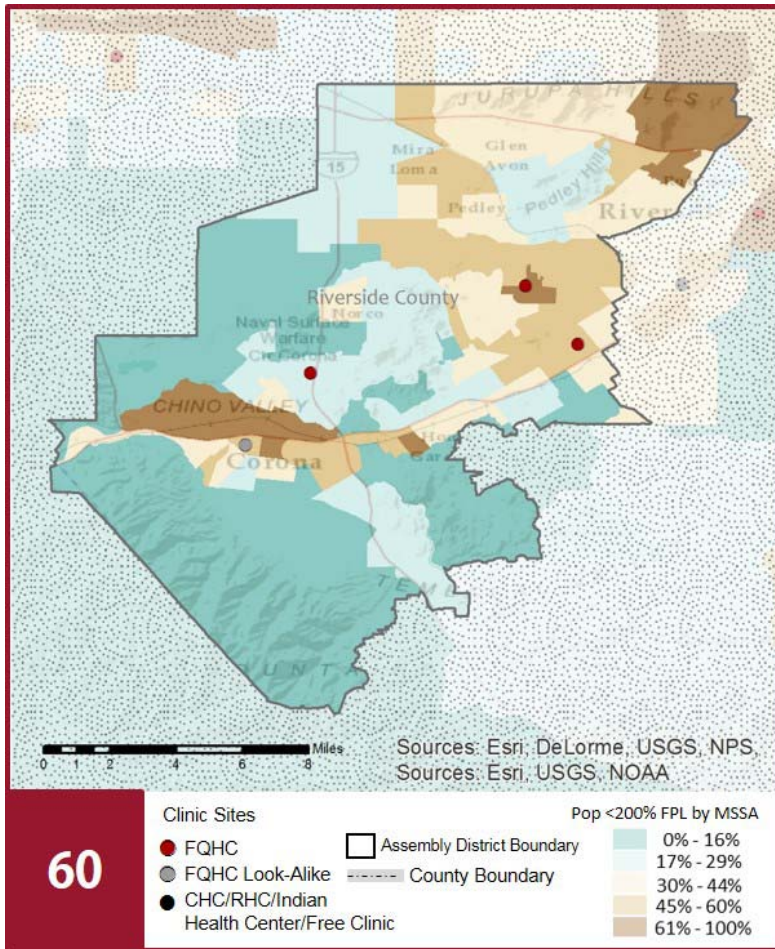
# CALIFORNIA COMMUNITY HEALTH CENTERS

## 2018 | Assembly District 60 Assemblymember Sabrina Cervantes



### The Clinics

Community Clinics and Health Centers (CCHCs) are nonprofit health care practices located in low income and medically underserved areas. CCHCs share a common mission to serve everyone who walks through their doors, regardless of their ability to pay. The term CCHC include Federally Qualified Health Centers (FQHC), FQHC Look-Alikes, Migrant Health Centers, Rural and Frontier Health Centers, and Free Clinics. CCHCs are an essential segment of the safety net. In many California Counties, they provide a significant proportion of comprehensive primary care services to those who are publicly subsidized or uninsured.



### Clinic Types

Total Number of CCHCs	4
Federally Qualified Health Center sites	3
Federally Qualified Health Center Look-Alike sites	1
95-210 Rural Health Center sites	0

### The Patients

#### Demographics

Patients	21,307	
Female	12,596	59%
Male	8,711	41%
19 Years & Under	7,828	37%
Encounters	77,806	

#### Poverty Levels

Under 100%	9,814	46%
100-138%	2,143	10%
139-200%	569	3%
201-400%	51	0%
Above 400%	206	1%
Unknown	8,524	40%

60

Race			Ethnicity			Age		
White (including Hispanic)	9,928	47%	Hispanic	13,479	63%	Less than 1 Year	459	2%
Black	909	4%	Non-Hispanic	4,942	23%	1 - 4 Years	1,389	7%
Native American	215	1%	Unknown	2,886	14%	5 - 12 Years	3,147	15%
Asian/ Pacific Islander	687	3%				13 - 14 Years	882	4%
More Than One Race	218	1%				15 - 19 Years	1,951	9%
Other/ Unknown	9,350	44%				20 - 34 Years	4,896	23%
						35 - 44 Years	2,821	13%
						45 - 64 Years	4,792	22%
						Over 65 Years	970	5%

#### Migratory Workers

Patients	162	1%
Encounters	617	1%

#### Language

Primary Language Not English	53%
------------------------------	-----

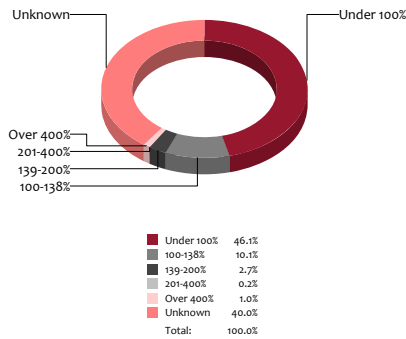
# CALIFORNIA COMMUNITY HEALTH CENTERS

## 2018 | Assembly District 60 Assemblymember Sabrina Cervantes



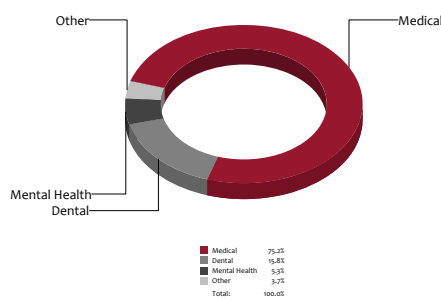
### Poverty Level

Patients



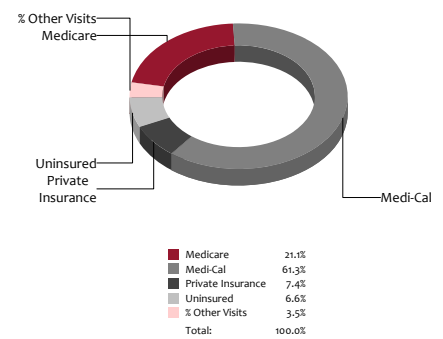
### Services

Visits



### Payment Source

Visits



### The Services

	Provider FTEs		Encounters	
Medical*	14.9	63%	58,479	75%
Dental*	5.5	23%	12,318	16%
Mental Health ***	1.5	6%	4,136	5%
Other****	1.8	8%	2,873	4%
<b>Total</b>	<b>24</b>		<b>77,806</b>	

### Health Centers providing other significant services

Vision Services	1	25%
Basic Lab Services	3	75%
Radiology Services	0	0%
Pharmacy Services	0	0%
Urgent Care Services	0	0%
Substance Abuse Services	1	25%
Womens Health Services	3	75%

\*Physicians, physician assistants, family nurse practitioners, certified nurse midwives, visiting nurses. \*\*Dentists and Registered Dental Hygienists  
\*\*\*Psychiatrists, clinical psychologists, and licensed clinical social workers. \*\*\*\*Other providers billable to Medi-Cal

### Revenue and Utilization by Payment Source

Program	Patients ^ ^		Encounters		Revenue	
	Count	%	Count	%	Count	%
Medicare	1,666	8%	16,447	21%	Gross Patient Revenue	\$20,933,476
Medi-Cal	15,032	71%	47,718	61%	Net Patient Revenue	\$14,244,201
Private Insurance	2,105	10%	5,772	7%	<b>Other Operating Revenue</b>	
Uninsured Services ^ ^ ^ ^	2,094	10%	5,172	7%	Federal	\$620,467
All County ^ ^ ^	0	0%	0	0%	State	\$52,245
Covered California	17	0%	62	0%	County/Local	\$0
PACE Patients	0	0%	0	0%	Private	\$54,157
Other	393	2%	549	1%	Donations/Contributions	\$3,751
BCCCP ^ ^	397	2%	597	1%	Other	\$75,926
CHDP ^ ^	173	1%	181	0%	<b>Total Operating Revenue</b>	
Family PACT ^ ^	644	3%	1,308	2%	<b>\$ 15,050,747</b>	

^ ^ Patient counts for Episodic programs (BCCP, CHDP, Family PACT) are duplicated. BCCCP = Breast and Cervical Cancer Control Program; CHDP = Child Health and Disability Prevention Program;  
Family PACT = Family Planning Access Care and Treatment program.  
^ ^ ^ County Indigent/CMSP/MISP, San Diego County Medical Plan, LA County Public/Private Partnership, and Other County Programs.  
^ ^ ^ ^ Free and Self-Pay/ Sliding Fee Programs.

Because of their philosophy and by necessity, CCHCs have been vigilant about controlling the cost of care, and the untoward effects of deferred or neglected care, by promoting a broad range of preventive health services specifically targeted to the particular needs of their communities and patient populations. The federal Office of Management and Budget has found the Health Center Program to be one of the ten most effective federal programs and the most effective program under the federal Health and Human Services Agency. Despite enormous challenges, CCHCs have persisted in their mission to serve their local communities.

All information compiled by Jeanita Harris, Sr. Data Analyst, CPCA. Numbers are based on 2016 OSHPD data.