

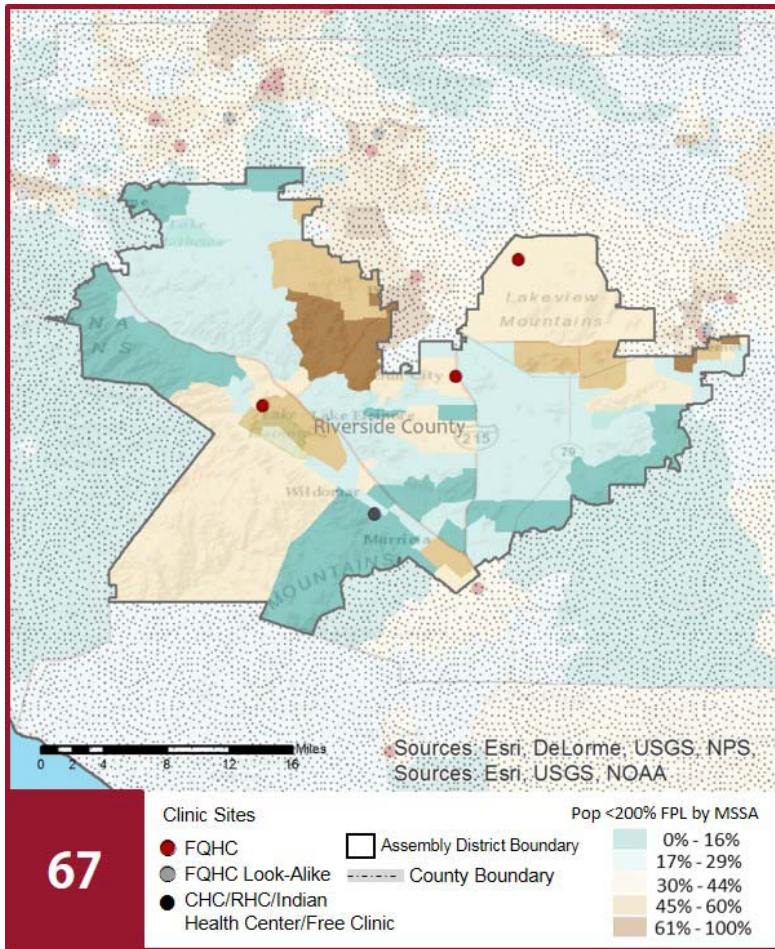
# CALIFORNIA COMMUNITY HEALTH CENTERS

**2018** | Assembly District 67  
 Assemblymember Melissa Melendez



## The Clinics

Community Clinics and Health Centers (CCHCs) are nonprofit health care practices located in low income and medically underserved areas. CCHCs share a common mission to serve everyone who walks through their doors, regardless of their ability to pay. The term CCHC include Federally Qualified Health Centers (FQHC), FQHC Look-Alikes, Migrant Health Centers, Rural and Frontier Health Centers, and Free Clinics. CCHCs are an essential segment of the safety net. In many California Counties, they provide a significant proportion of comprehensive primary care services to those who are publicly subsidized or uninsured.



## Clinic Types

Total Number of CCHCs	4
Federally Qualified Health Center sites	3
Federally Qualified Health Center Look-Alike sites	0
95-210 Rural Health Center sites	1

## The Patients Demographics

Patients	4,768	
Female	3,174	67%
Male	1,594	33%
19 Years & Under	1,747	37%
Encounters	14,332	

## Poverty Levels

Under 100%	1,957	41%
100-138%	425	9%
139-200%	313	7%
201-400%	510	11%
Above 400%	32	1%
Unknown	1,531	32%

### Race

White (including Hispanic)	2,444	51%
Black	214	4%
Native American	59	1%
Asian/ Pacific Islander	129	3%
More Than One Race	217	5%
Other/ Unknown	1,705	36%

### Ethnicity

Hispanic	2,391	50%
Non-Hispanic	1,378	29%
Unknown	999	21%

### Age

Less than 1 Year	77	2%
1 - 4 Years	295	6%
5 - 12 Years	790	17%
13 - 14 Years	156	3%
15 - 19 Years	429	9%
20 - 34 Years	1,221	26%
35 - 44 Years	617	13%
45 - 64 Years	1,048	22%
Over 65 Years	135	3%

### Migratory Workers

Patients	77	2%
Encounters	270	2%

### Language

Primary Language Not English	19%
------------------------------	-----

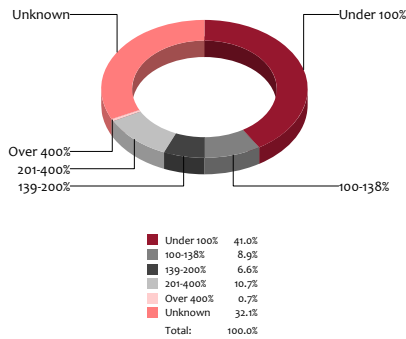
# CALIFORNIA COMMUNITY HEALTH CENTERS

2018 | Assembly District 67  
Assemblymember Melissa Melendez



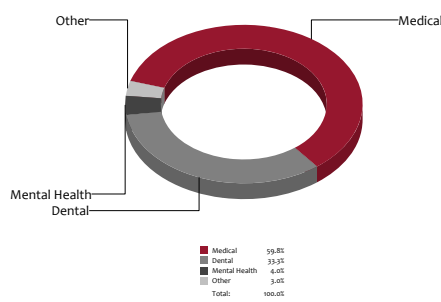
## Poverty Level

Patients



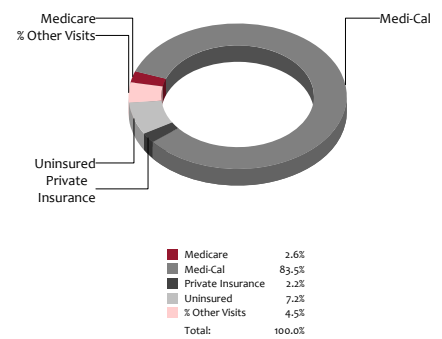
## Services

Visits



## Payment Source

Visits



## The Services

	Provider FTEs		Encounters	
Medical*	4.2	51%	8,570	60%
Dental*	2.1	25%	4,769	33%
Mental Health ***	0.9	11%	568	4%
Other****	1.0	12%	425	3%
<b>Total</b>	<b>8</b>		<b>14,332</b>	

## Health Centers providing other significant services

Vision Services	0	0%
Basic Lab Services	1	25%
Radiology Services	0	0%
Pharmacy Services	0	0%
Urgent Care Services	0	0%
Substance Abuse Services	0	0%
Womens Health Services	3	75%

\*Physicians, physician assistants, family nurse practitioners, certified nurse midwives, visiting nurses. \*\*Dentists and Registered Dental Hygienists  
\*\*\*Psychiatrists, clinical psychologists, and licensed clinical social workers. \*\*\*\*Other providers billable to Medi-Cal

## Revenue and Utilization by Payment Source

Program	Patients ^ ^		Encounters		Revenue	
Medicare	110	2%	377	3%	Gross Patient Revenue	\$2,382,937
Medi-Cal	3,711	78%	11,973	84%	Net Patient Revenue	\$2,557,130
Private Insurance	131	3%	317	2%	<b>Other Operating Revenue</b>	
Uninsured Services ^ ^ ^ ^	733	15%	1,025	7%	Federal	\$861,898
All County ^ ^ ^	3	0%	7	0%	State	\$16,333
Covered California	75	2%	238	2%	County/Local	\$3,863
PACE Patients	0	0%	0	0%	Private	\$41,120
Other	5	0%	12	0%	Donations/Contributions	\$121,524
BCCCP ^ ^	79	2%	105	1%	Other	\$3,910
CHDP ^ ^	100	2%	106	1%	<b>Total Operating Revenue</b>	
Family PACT ^ ^	121	3%	172	1%	<b>\$ 3,932,388</b>	

^ ^ Patient counts for Episodic programs (BCCP, CHDP, Family PACT) are duplicated. BCCCP = Breast and Cervical Cancer Control Program; CHDP = Child Health and Disability Prevention Program;  
Family PACT = Family Planning Access Care and Treatment program.  
^ ^ ^ County Indigent/CMSP/MISP, San Diego County Medical Plan, LA County Public/Private Partnership, and Other County Programs.  
^ ^ ^ ^ Free and Self-Pay/ Sliding Fee Programs.

Because of their philosophy and by necessity, CCHCs have been vigilant about controlling the cost of care, and the untoward effects of deferred or neglected care, by promoting a broad range of preventive health services specifically targeted to the particular needs of their communities and patient populations. The federal Office of Management and Budget has found the Health Center Program to be one of the ten most effective federal programs and the most effective program under the federal Health and Human Services Agency. Despite enormous challenges, CCHCs have persisted in their mission to serve their local communities.

All information compiled by Jeanita Harris, Sr. Data Analyst, CPCA. Numbers are based on 2016 OSHPD data.