

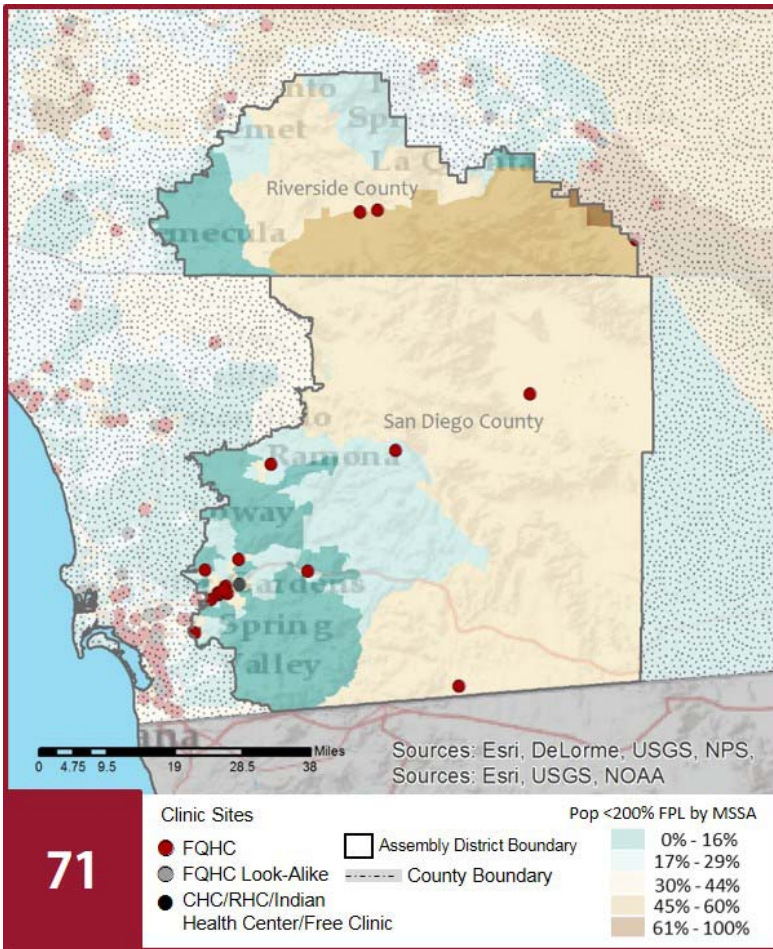
CALIFORNIA COMMUNITY HEALTH CENTERS

2018 | Assembly District 71
 Assemblymember Randy Voepel



The Clinics

Community Clinics and Health Centers (CCHCs) are nonprofit health care practices located in low income and medically underserved areas. CCHCs share a common mission to serve everyone who walks through their doors, regardless of their ability to pay. The term CCHC include Federally Qualified Health Centers (FQHC), FQHC Look-Alikes, Migrant Health Centers, Rural and Frontier Health Centers, and Free Clinics. CCHCs are an essential segment of the safety net. In many California Counties, they provide a significant proportion of comprehensive primary care services to those who are publicly subsidized or uninsured.



Clinic Types

Total Number of CCHCs	19
Federally Qualified Health Center sites	18
Federally Qualified Health Center Look-Alike sites	0
95-210 Rural Health Center sites	4

The Patients

Demographics

Patients	119,970	
Female	73,311	61%
Male	46,659	39%
19 Years & Under	37,584	31%
Encounters	408,864	

Poverty Levels

Under 100%	68,806	57%
100-138%	11,049	9%
139-200%	4,852	4%
201-400%	2,040	2%
Above 400%	745	1%
Unknown	32,478	27%

Race

White (including Hispanic)	79,932	67%
Black	5,842	5%
Native American	1,018	1%
Asian/ Pacific Islander	3,370	3%
More Than One Race	1,890	2%
Other/ Unknown	27,918	23%

Ethnicity

Hispanic	39,652	33%
Non-Hispanic	63,987	53%
Unknown	16,331	14%

Age

Less than 1 Year	3,038	3%
1 - 4 Years	7,761	6%
5 - 12 Years	13,930	12%
13 - 14 Years	3,308	3%
15 - 19 Years	9,547	8%
20 - 34 Years	30,384	25%
35 - 44 Years	14,898	12%
45 - 64 Years	28,416	24%
Over 65 Years	8,688	7%

Migratory Workers

Patients	851	1%
Encounters	3,061	1%

Language

Primary Language Not English	39%
------------------------------	-----

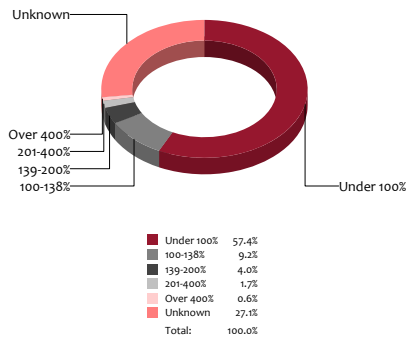
CALIFORNIA COMMUNITY HEALTH CENTERS

2018 | Assembly District 71 Assemblymember Randy Voepel



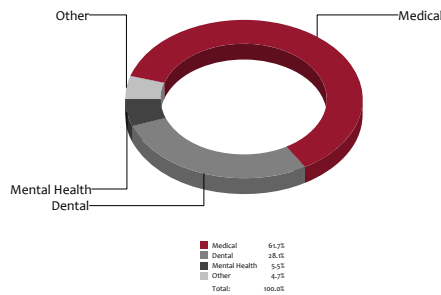
Poverty Level

Patients



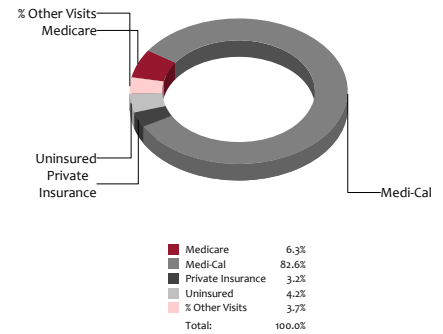
Services

Visits



Payment Source

Visits



The Services

	Provider FTEs		Encounters	
Medical*	68.4	59%	252,362	62%
Dental*	10.8	9%	114,749	28%
Mental Health ***	16.8	14%	22,429	5%
Other***	20.5	18%	19,324	5%
Total	116		408,864	

Health Centers providing other significant services

Vision Services	2	11%
Basic Lab Services	11	58%
Radiology Services	4	21%
Pharmacy Services	3	16%
Urgent Care Services	1	5%
Substance Abuse Services	6	32%
Womens Health Services	11	58%

*Physicians, physician assistants, family nurse practitioners, certified nurse midwives, visiting nurses. **Dentists and Registered Dental Hygienists
Psychiatrists, clinical psychologists, and licensed clinical social workers. *Other providers billable to Medi-Cal

Revenue and Utilization by Payment Source

Program	Patients ^ ^		Encounters		Revenue	
	Count	%	Count	%	Amount	%
Medicare	5,966	5%	25,800	6%	Gross Patient Revenue	\$99,179,078
Medi-Cal	93,117	78%	337,667	83%	Net Patient Revenue	\$84,752,095
Private Insurance	4,021	3%	13,225	3%	Other Operating Revenue	
Uninsured Services ^ ^ ^ ^	15,957	13%	17,135	4%	Federal	\$9,191,019
All County ^ ^ ^	6	0%	296	0%	State	\$71,978
Covered California	761	1%	2,018	0%	County/Local	\$3,260,835
PACE Patients	0	0%	0	0%	Private	\$1,895,582
Other	142	0%	253	0%	Donations/Contributions	\$107,180
BCCCP ^ ^	910	1%	1,152	0%	Other	\$2,839,247
CHDP ^ ^	795	1%	1,064	0%	Total Operating Revenue	
Family PACT ^ ^	5,963	5%	10,254	3%	\$ 102,951,290	

^ ^ Patient counts for Episodic programs (BCCP, CHDP, Family PACT) are duplicated. BCCCP = Breast and Cervical Cancer Control Program; CHDP = Child Health and Disability Prevention Program;
Family PACT = Family Planning Access Care and Treatment program.
^ ^ ^ County Indigent/CMSP/MISP, San Diego County Medical Plan, LA County Public/Private Partnership, and Other County Programs.
^ ^ ^ ^ Free and Self-Pay/ Sliding Fee Programs.

Because of their philosophy and by necessity, CCHCs have been vigilant about controlling the cost of care, and the untoward effects of deferred or neglected care, by promoting a broad range of preventive health services specifically targeted to the particular needs of their communities and patient populations. The federal Office of Management and Budget has found the Health Center Program to be one of the ten most effective federal programs and the most effective program under the federal Health and Human Services Agency. Despite enormous challenges, CCHCs have persisted in their mission to serve their local communities.

All information compiled by Jeanita Harris, Sr. Data Analyst, CPCA. Numbers are based on 2016 OSHPD data.