

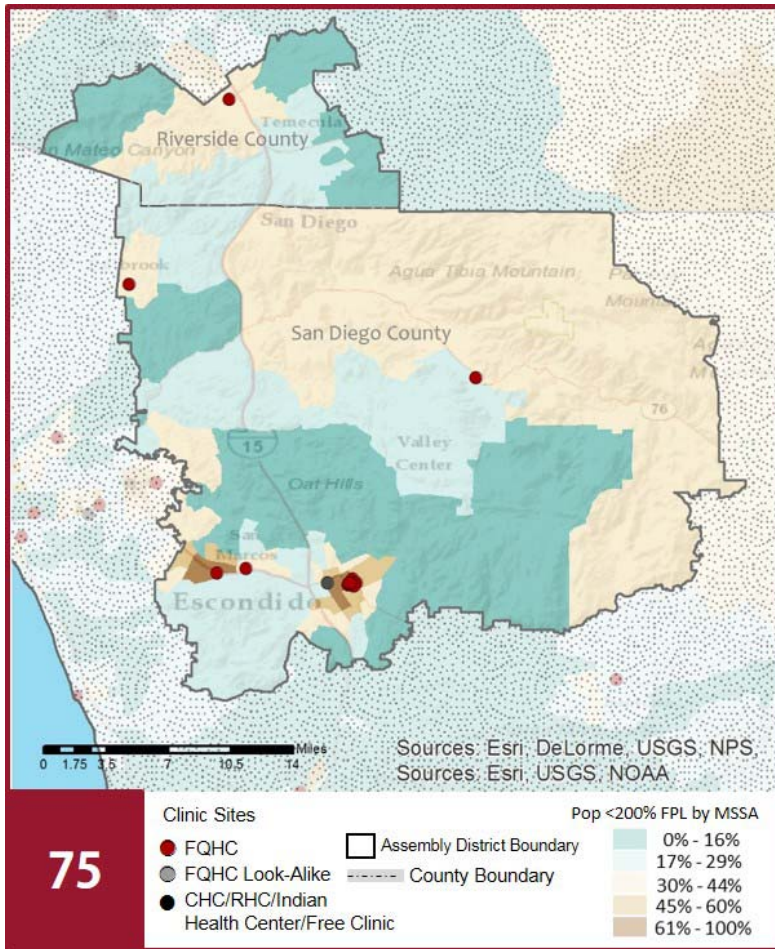
CALIFORNIA COMMUNITY HEALTH CENTERS

2018 | Assembly District 75 Assemblymember Marie Waldron



The Clinics

Community Clinics and Health Centers (CCHCs) are nonprofit health care practices located in low income and medically underserved areas. CCHCs share a common mission to serve everyone who walks through their doors, regardless of their ability to pay. The term CCHC include Federally Qualified Health Centers (FQHC), FQHC Look-Alikes, Migrant Health Centers, Rural and Frontier Health Centers, and Free Clinics. CCHCs are an essential segment of the safety net. In many California Counties, they provide a significant proportion of comprehensive primary care services to those who are publicly subsidized or uninsured.



Clinic Types

Total Number of CCHCs	13
Federally Qualified Health Center sites	12
Federally Qualified Health Center Look-Alike sites	0
95-210 Rural Health Center sites	0

The Patients Demographics

Patients	121,891	
Female	76,868	63%
Male	45,023	37%
19 Years & Under	43,837	36%
Encounters	436,094	

Poverty Levels

Under 100%	60,081	49%
100-138%	15,160	12%
139-200%	6,840	6%
201-400%	17,283	14%
Above 400%	618	1%
Unknown	21,909	18%

Race

White (including Hispanic)	68,927	57%
Black	2,491	2%
Native American	522	0%
Asian/ Pacific Islander	4,718	4%
More Than One Race	3,049	3%
Other/ Unknown	42,184	35%

Ethnicity

Hispanic	76,227	63%
Non-Hispanic	33,561	28%
Unknown	12,103	10%

Age

Less than 1 Year	3,436	3%
1 - 4 Years	9,540	8%
5 - 12 Years	17,432	14%
13 - 14 Years	3,571	3%
15 - 19 Years	9,858	8%
20 - 34 Years	31,893	26%
35 - 44 Years	15,082	12%
45 - 64 Years	25,403	21%
Over 65 Years	5,676	5%

Migratory Workers

Patients	6,575	5%
Encounters	24,501	6%

Language

Primary Language Not English	43%
------------------------------	-----

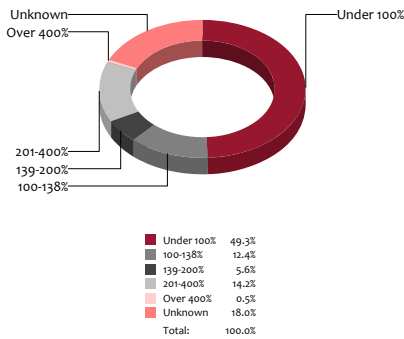
CALIFORNIA COMMUNITY HEALTH CENTERS

2018 | Assembly District 75
Assemblymember Marie Waldron



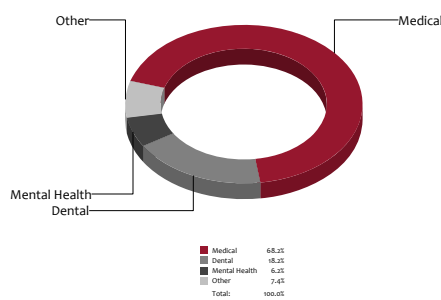
Poverty Level

Patients



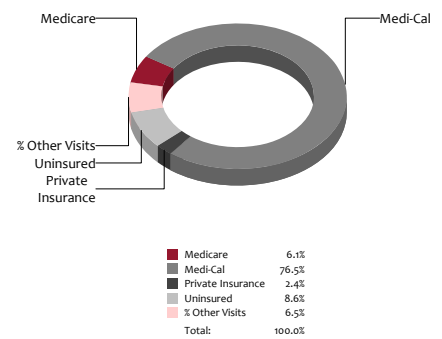
Services

Visits



Payment Source

Visits



The Services

	Provider FTEs		Encounters	
Medical*	80.7	64%	297,334	68%
Dental*	14.4	11%	79,313	18%
Mental Health ***	15.7	12%	27,082	6%
Other***	15.9	13%	32,365	7%
Total	127		436,094	

Health Centers providing other significant services

Vision Services	1	8%
Basic Lab Services	11	85%
Radiology Services	1	8%
Pharmacy Services	3	23%
Urgent Care Services	3	23%
Substance Abuse Services	1	8%
Womens Health Services	11	85%

*Physicians, physician assistants, family nurse practitioners, certified nurse midwives, visiting nurses. **Dentists and Registered Dental Hygienists
Psychiatrists, clinical psychologists, and licensed clinical social workers. *Other providers billable to Medi-Cal

Revenue and Utilization by Payment Source

Program	Patients ^ ^		Encounters		Revenue	
	Count	%	Count	%	Count	%
Medicare	5,507	5%	26,451	6%	Gross Patient Revenue	\$82,645,958
Medi-Cal	82,222	67%	333,439	76%	Net Patient Revenue	\$71,297,448
Private Insurance	4,036	3%	10,396	2%	Other Operating Revenue	
Uninsured Services ^ ^ ^ ^	27,938	23%	37,307	9%	Federal	\$8,399,810
All County ^ ^ ^	109	0%	754	0%	State	\$193,543
Covered California	1,442	1%	4,388	1%	County/Local	\$98,870
PACE Patients	0	0%	0	0%	Private	\$3,708,144
Other	637	1%	644	0%	Donations/Contributions	\$32,483
BCCCP ^ ^	2,834	2%	3,251	1%	Other	\$3,242,318
CHDP ^ ^	2,091	2%	2,860	1%	Total Operating Revenue	
Family PACT ^ ^	9,918	8%	16,604	4%	\$ 86,972,616	

^ ^ Patient counts for Episodic programs (BCCP, CHDP, Family PACT) are duplicated. BCCCP = Breast and Cervical Cancer Control Program; CHDP = Child Health and Disability Prevention Program;
Family PACT = Family Planning Access Care and Treatment program.
^ ^ ^ County Indigent/CMSP/MISP, San Diego County Medical Plan, LA County Public/Private Partnership, and Other County Programs.
^ ^ ^ ^ Free and Self-Pay/ Sliding Fee Programs.

Because of their philosophy and by necessity, CCHCs have been vigilant about controlling the cost of care, and the untoward effects of deferred or neglected care, by promoting a broad range of preventive health services specifically targeted to the particular needs of their communities and patient populations. The federal Office of Management and Budget has found the Health Center Program to be one of the ten most effective federal programs and the most effective program under the federal Health and Human Services Agency. Despite enormous challenges, CCHCs have persisted in their mission to serve their local communities.

All information compiled by Jeanita Harris, Sr. Data Analyst, CPCA. Numbers are based on 2016 OSHPD data.