

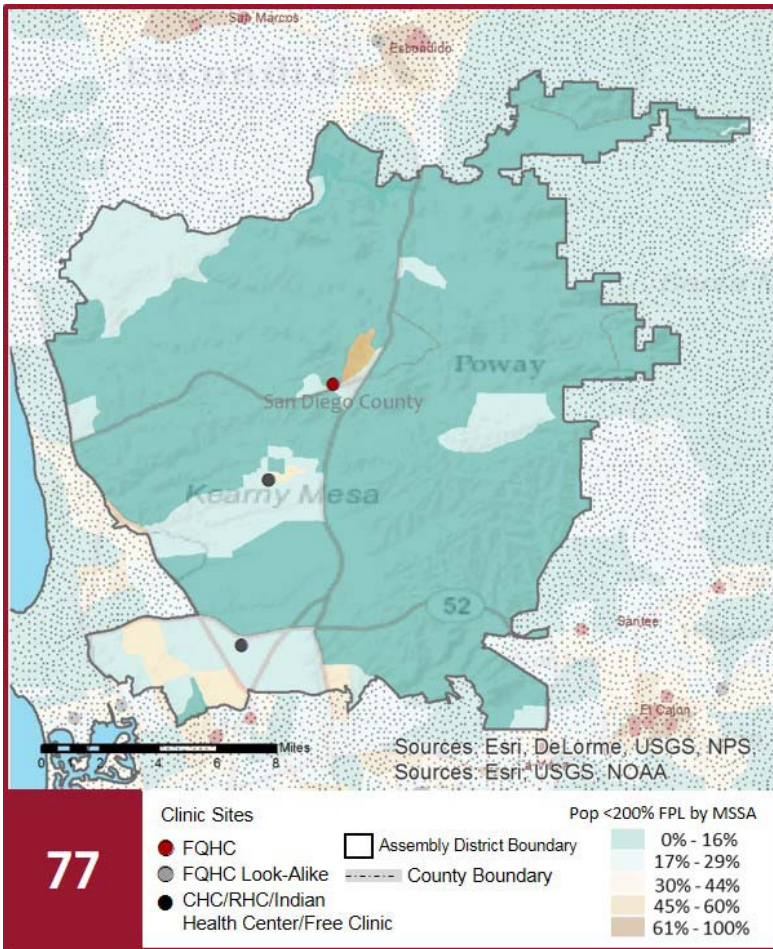
CALIFORNIA COMMUNITY HEALTH CENTERS

2018 | Assembly District 77 Assemblymember Brian Maienschein



The Clinics

Community Clinics and Health Centers (CCHCs) are nonprofit health care practices located in low income and medically underserved areas. CCHCs share a common mission to serve everyone who walks through their doors, regardless of their ability to pay. The term CCHC include Federally Qualified Health Centers (FQHC), FQHC Look-Alikes, Migrant Health Centers, Rural and Frontier Health Centers, and Free Clinics. CCHCs are an essential segment of the safety net. In many California Counties, they provide a significant proportion of comprehensive primary care services to those who are publicly subsidized or uninsured.



Clinic Types

Total Number of CCHCs	4
Federally Qualified Health Center sites	2
Federally Qualified Health Center Look-Alike sites	0
95-210 Rural Health Center sites	0

The Patients

Demographics

Patients	17,301	
Female	15,044	87%
Male	2,257	13%
19 Years & Under	1,636	9%
Encounters	27,638	

Poverty Levels

Under 100%	11,093	64%
100-138%	2,395	14%
139-200%	1,930	11%
201-400%	1,315	8%
Above 400%	566	3%
Unknown	2	0%

77

Race			Ethnicity			Age		
White (including Hispanic)	10,369	60%	Hispanic	3,700	21%	Less than 1 Year	0	0%
Black	973	6%	Non-Hispanic	11,585	67%	1 - 4 Years	0	0%
Native American	48	0%	Unknown	2,016	12%	5 - 12 Years	0	0%
Asian/ Pacific Islander	2,885	17%				13 - 14 Years	10	0%
More Than One Race	80	0%				15 - 19 Years	1,626	9%
Other/ Unknown	2,946	17%				20 - 34 Years	12,913	75%
						35 - 44 Years	2,113	12%
						45 - 64 Years	629	4%
						Over 65 Years	10	0%

Migratory Workers

Patients	0	0%
Encounters	0	0%

Language

Primary Language Not English	1%
------------------------------	----

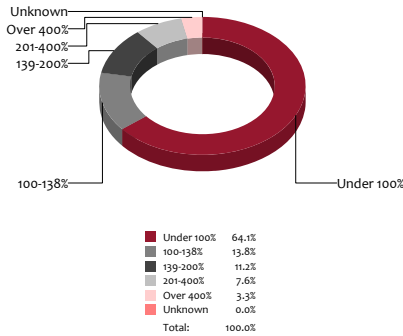
CALIFORNIA COMMUNITY HEALTH CENTERS

2018 | Assembly District 77 Assemblymember Brian Maienschein



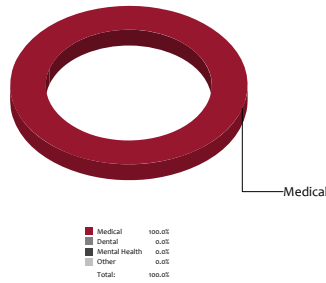
Poverty Level

Patients



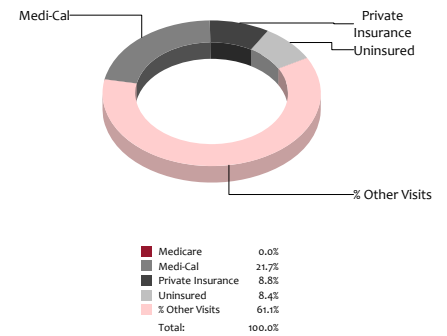
Services

Visits



Payment Source

Visits



The Services

	Provider FTEs		Encounters	
Medical*	4.8	100%	27,638	100%
Dental**	0.0	0%	0	0%
Mental Health ***	0.0	0%	0	0%
Other****	0.0	0%	0	0%
Total	5		27,638	

Health Centers providing other significant services

Vision Services	0	0%
Basic Lab Services	2	50%
Radiology Services	0	0%
Pharmacy Services	2	50%
Urgent Care Services	0	0%
Substance Abuse Services	0	0%
Womens Health Services	2	50%

*Physicians, physician assistants, family nurse practitioners, certified nurse midwives, visiting nurses. **Dentists and Registered Dental Hygienists
Psychiatrists, clinical psychologists, and licensed clinical social workers. *Other providers billable to Medi-Cal

Revenue and Utilization by Payment Source

Program	Patients ^ ^		Encounters		Revenue	
	Count	%	Count	%	Count	%
Medicare	0	0%	0	0%		
Medi-Cal	3,521	20%	5,997	22%	Gross Patient Revenue	\$6,243,984
Private Insurance	1,839	11%	2,428	9%	Net Patient Revenue	\$4,262,682
Uninsured Services ^ ^ ^ ^	11,775	68%	2,314	8%	Other Operating Revenue	
All County ^ ^ ^	0	0%	0	0%	Federal	\$6,239
Covered California	166	1%	226	1%	State	\$0
PACE Patients	0	0%	0	0%	County/Local	\$0
Other	0	0%	0	0%	Private	\$0
BCCCP ^ ^	0	0%	0	0%	Donations/Contributions	\$51,515
CHDP ^ ^	0	0%	0	0%	Other	-\$3,968
Family PACT ^ ^	10,012	58%	16,673	60%	Total Operating Revenue	\$ 4,316,468

^ ^ Patient counts for Episodic programs (BCCP, CHDP, Family PACT) are duplicated. BCCCP = Breast and Cervical Cancer Control Program; CHDP = Child Health and Disability Prevention Program;
Family PACT = Family Planning Access Care and Treatment program.
^ ^ ^ County Indigent/CMSP/MISP, San Diego County Medical Plan, LA County Public/Private Partnership, and Other County Programs.
^ ^ ^ ^ Free and Self-Pay/ Sliding Fee Programs.

Because of their philosophy and by necessity, CCHCs have been vigilant about controlling the cost of care, and the untoward effects of deferred or neglected care, by promoting a broad range of preventive health services specifically targeted to the particular needs of their communities and patient populations. The federal Office of Management and Budget has found the Health Center Program to be one of the ten most effective federal programs and the most effective program under the federal Health and Human Services Agency. Despite enormous challenges, CCHCs have persisted in their mission to serve their local communities.

All information compiled by Jeanita Harris, Sr. Data Analyst, CPCA. Numbers are based on 2016 OSHPD data.