

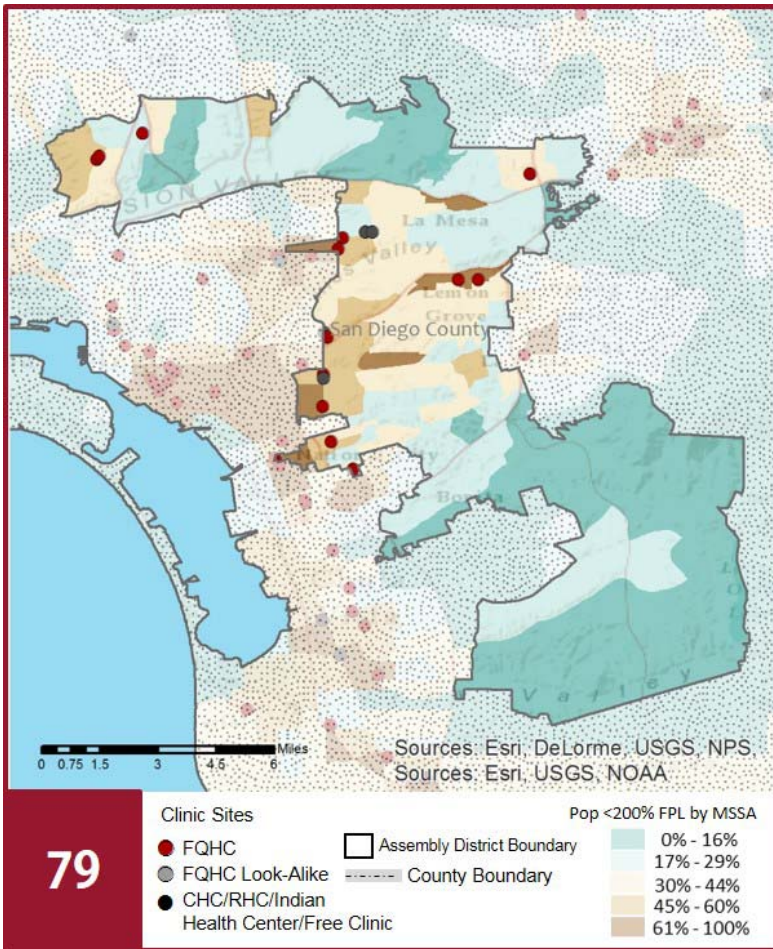
# CALIFORNIA COMMUNITY HEALTH CENTERS

**2018** | Assembly District 79  
 Assemblymember Shirley Weber



## The Clinics

Community Clinics and Health Centers (CCHCs) are nonprofit health care practices located in low income and medically underserved areas. CCHCs share a common mission to serve everyone who walks through their doors, regardless of their ability to pay. The term CCHC include Federally Qualified Health Centers (FQHC), FQHC Look-Alikes, Migrant Health Centers, Rural and Frontier Health Centers, and Free Clinics. CCHCs are an essential segment of the safety net. In many California Counties, they provide a significant proportion of comprehensive primary care services to those who are publicly subsidized or uninsured.



## Clinic Types

Total Number of CCHCs	18
Federally Qualified Health Center sites	14
Federally Qualified Health Center Look-Alike sites	0
95-210 Rural Health Center sites	0

## The Patients

### Demographics

Patients	94,988	
Female	62,641	66%
Male	32,347	34%
19 Years & Under	26,437	28%
Encounters	380,667	

### Poverty Levels

Under 100%	70,728	74%
100-138%	11,265	12%
139-200%	5,508	6%
201-400%	2,407	3%
Above 400%	780	1%
Unknown	4,300	5%

Race			Ethnicity			Age		
White (including Hispanic)	53,135	56%	Hispanic	45,166	48%	Less than 1 Year	1,850	2%
Black	12,116	13%	Non-Hispanic	44,406	47%	1 - 4 Years	5,776	6%
Native American	666	1%	Unknown	5,416	6%	5 - 12 Years	10,017	11%
Asian/ Pacific Islander	10,253	11%				13 - 14 Years	1,920	2%
More Than One Race	1,376	1%				15 - 19 Years	6,874	7%
Other/ Unknown	17,442	18%				20 - 34 Years	31,411	33%
						35 - 44 Years	11,390	12%
						45 - 64 Years	20,924	22%
						Over 65 Years	4,826	5%

### Migratory Workers

Patients	366	0%
Encounters	1,413	0%

### Language

Primary Language Not English	26%
------------------------------	-----

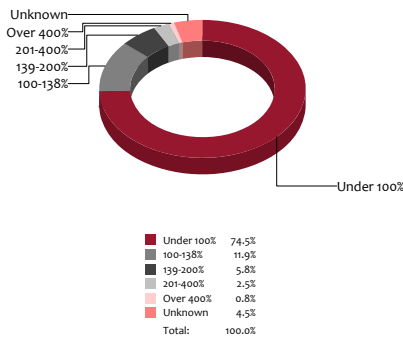
# CALIFORNIA COMMUNITY HEALTH CENTERS

2018 | Assembly District 79  
Assemblymember Shirley Weber



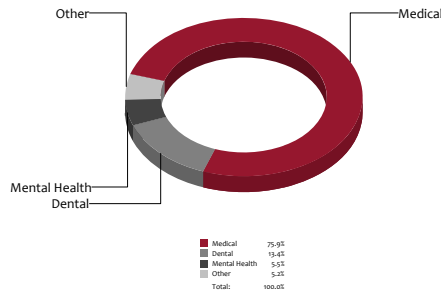
## Poverty Level

Patients



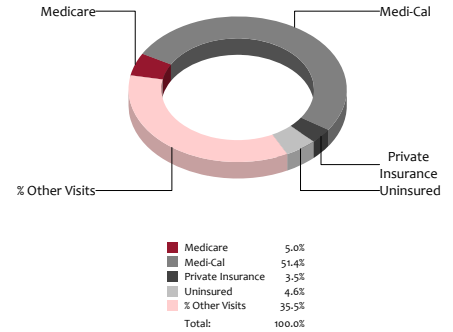
## Services

Visits



## Payment Source

Visits



## The Services

	Provider FTEs		Encounters	
Medical*	67.9	52%	289,052	76%
Dental*	26.7	20%	51,132	13%
Mental Health ***	19.1	15%	20,857	5%
Other***	16.9	13%	19,626	5%
<b>Total</b>	<b>131</b>		<b>380,667</b>	

## Health Centers providing other significant services

Vision Services	3	17%
Basic Lab Services	12	67%
Radiology Services	2	11%
Pharmacy Services	4	22%
Urgent Care Services	0	0%
Substance Abuse Services	6	33%
Womens Health Services	11	61%

\*Physicians, physician assistants, family nurse practitioners, certified nurse midwives, visiting nurses. \*\*Dentists and Registered Dental Hygienists  
\*\*\*Psychiatrists, clinical psychologists, and licensed clinical social workers. \*\*\*\*Other providers billable to Medi-Cal

## Revenue and Utilization by Payment Source

Program	Patients ^ ^		Encounters	
Medicare	4,699	5%	19,037	5%
Medi-Cal	61,460	65%	195,502	51%
Private Insurance	3,449	4%	13,323	3%
Uninsured Services ^ ^ ^ ^	22,462	24%	17,697	5%
All County ^ ^ ^	11	0%	209	0%
Covered California	1,314	1%	3,007	1%
PACE Patients	0	0%	0	0%
Other	1,593	2%	108,138	28%
BCCCP ^ ^	561	1%	1,315	0%
CHDP ^ ^	2,281	2%	2,766	1%
Family PACT ^ ^	11,348	12%	19,673	5%

Revenue	
Gross Patient Revenue	\$78,074,263
Net Patient Revenue	\$52,431,663
<b>Other Operating Revenue</b>	
Federal	\$5,819,610
State	\$447,623
County/Local	\$89,593
Private	\$1,169,793
Donations/Contributions	\$69,624
Other	\$2,780,958
<b>Total Operating Revenue</b>	<b>\$ 62,844,363</b>

^ ^ Patient counts for Episodic programs (BCCP, CHDP, Family PACT) are duplicated. BCCCP = Breast and Cervical Cancer Control Program; CHDP = Child Health and Disability Prevention Program;  
Family PACT = Family Planning Access Care and Treatment program.  
^ ^ ^ County Indigent/CMSP/MISP, San Diego County Medical Plan, LA County Public/Private Partnership, and Other County Programs.  
^ ^ ^ ^ Free and Self-Pay/ Sliding Fee Programs.

Because of their philosophy and by necessity, CCHCs have been vigilant about controlling the cost of care, and the untoward effects of deferred or neglected care, by promoting a broad range of preventive health services specifically targeted to the particular needs of their communities and patient populations. The federal Office of Management and Budget has found the Health Center Program to be one of the ten most effective federal programs and the most effective program under the federal Health and Human Services Agency. Despite enormous challenges, CCHCs have persisted in their mission to serve their local communities.

All information compiled by Jeanita Harris, Sr. Data Analyst, CPCA. Numbers are based on 2016 OSHPD data.