

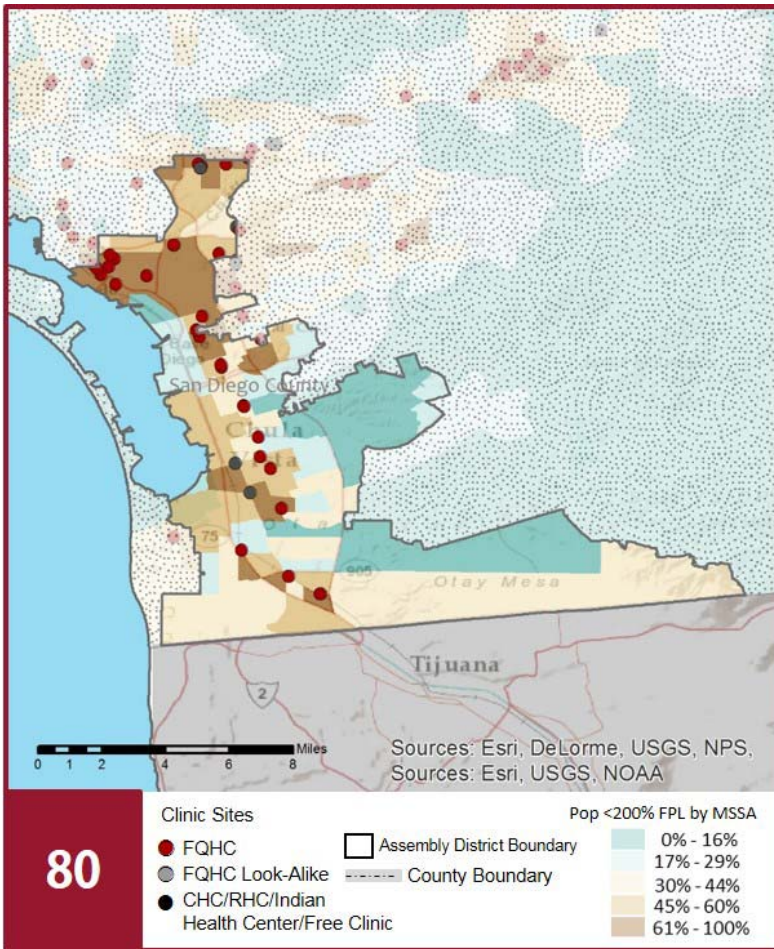
CALIFORNIA COMMUNITY HEALTH CENTERS

2018 | Assembly District 80
 Assemblymember Lorena Gonzalez Fletcher



The Clinics

Community Clinics and Health Centers (CCHCs) are nonprofit health care practices located in low income and medically underserved areas. CCHCs share a common mission to serve everyone who walks through their doors, regardless of their ability to pay. The term CCHC include Federally Qualified Health Centers (FQHC), FQHC Look-Alikes, Migrant Health Centers, Rural and Frontier Health Centers, and Free Clinics. CCHCs are an essential segment of the safety net. In many California Counties, they provide a significant proportion of comprehensive primary care services to those who are publicly subsidized or uninsured.



Clinic Types

Total Number of CCHCs	36
Federally Qualified Health Center sites	33
Federally Qualified Health Center Look-Alike sites	0
95-210 Rural Health Center sites	0

The Patients

Demographics

Patients	265,386	
Female	165,501	62%
Male	99,885	38%
19 Years & Under	87,779	33%
Encounters	796,489	

Poverty Levels

Under 100%	188,407	71%
100-138%	27,837	10%
139-200%	12,707	5%
201-400%	5,310	2%
Above 400%	1,848	1%
Unknown	13,135	5%

Race

White (including Hispanic)	123,264	46%
Black	18,695	7%
Native American	659	0%
Asian/ Pacific Islander	19,219	7%
More Than One Race	5,076	2%
Other/ Unknown	98,473	37%

Language

Primary Language Not English	43%
------------------------------	-----

Ethnicity

Hispanic	184,147	69%
Non-Hispanic	70,002	26%
Unknown	11,237	4%

Migratory Workers

Patients	3,275	1%
Encounters	4,354	1%

Age

Less than 1 Year	7,503	3%
1 - 4 Years	19,597	8%
5 - 12 Years	33,401	13%
13 - 14 Years	6,994	3%
15 - 19 Years	20,284	8%
20 - 34 Years	66,354	27%
35 - 44 Years	30,705	12%
45 - 64 Years	61,832	25%
Over 65 Years	18,716	8%

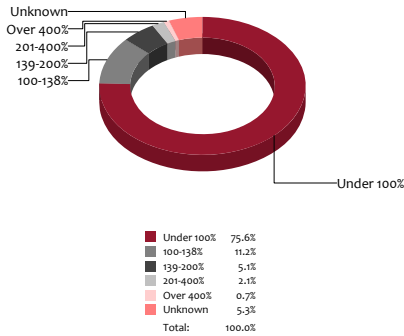
CALIFORNIA COMMUNITY HEALTH CENTERS

2018 | Assembly District 80
Assemblymember Lorena Gonzalez Fletcher



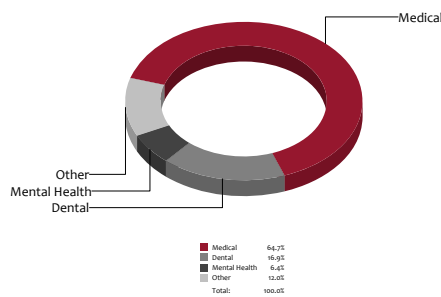
Poverty Level

Patients



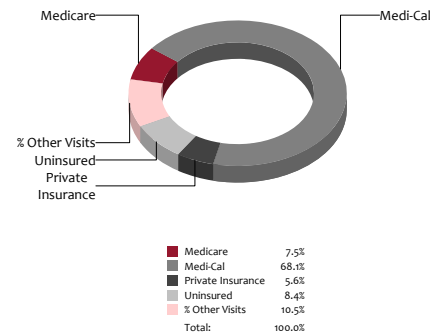
Services

Visits



Payment Source

Visits



The Services

	Provider FTEs		Encounters	
Medical*	160.8	50%	515,417	65%
Dental**	36.4	11%	134,677	17%
Mental Health ***	37.7	12%	50,740	6%
Other****	84.7	27%	95,655	12%
Total	320		796,489	

Health Centers providing other significant services

Vision Services	10	28%
Basic Lab Services	27	75%
Radiology Services	7	19%
Pharmacy Services	10	28%
Urgent Care Services	2	6%
Substance Abuse Services	14	39%
Womens Health Services	21	58%

*Physicians, physician assistants, family nurse practitioners, certified nurse midwives, visiting nurses. **Dentists and Registered Dental Hygienists
Psychiatrists, clinical psychologists, and licensed clinical social workers. *Other providers billable to Medi-Cal

Revenue and Utilization by Payment Source

Program	Patients ^ ^		Encounters		Revenue	
	Count	%	Count	%	Count	%
Medicare	15,618	6%	59,596	7%	Gross Patient Revenue	\$290,261,150
Medi-Cal	173,956	66%	542,281	68%	Net Patient Revenue	\$189,078,335
Private Insurance	6,473	2%	44,341	6%	Other Operating Revenue	
Uninsured Services ^ ^ ^ ^	62,178	23%	66,744	8%	Federal	\$28,540,391
All County ^ ^ ^	230	0%	4,179	1%	State	\$770,493
Covered California	3,674	1%	8,397	1%	County/Local	\$6,470,186
PACE Patients	264	0%	19,428	2%	Private	\$3,062,729
Other	2,993	1%	3,686	0%	Donations/Contributions	\$964,258
BCCCP ^ ^	2,628	1%	6,668	1%	Other	\$12,619,107
CHDP ^ ^	10,214	4%	12,221	2%	Total Operating Revenue	
Family PACT ^ ^	15,244	6%	28,948	4%	\$ 241,505,499	

^ ^ Patient counts for Episodic programs (BCCP, CHDP, Family PACT) are duplicated. BCCCP = Breast and Cervical Cancer Control Program; CHDP = Child Health and Disability Prevention Program;
Family PACT = Family Planning Access Care and Treatment program.
^ ^ ^ County Indigent/CMSP/MISP, San Diego County Medical Plan, LA County Public/Private Partnership, and Other County Programs.
^ ^ ^ ^ Free and Self-Pay/ Sliding Fee Programs.

Because of their philosophy and by necessity, CCHCs have been vigilant about controlling the cost of care, and the untoward effects of deferred or neglected care, by promoting a broad range of preventive health services specifically targeted to the particular needs of their communities and patient populations. The federal Office of Management and Budget has found the Health Center Program to be one of the ten most effective federal programs and the most effective program under the federal Health and Human Services Agency. Despite enormous challenges, CCHCs have persisted in their mission to serve their local communities.

All information compiled by Jeanita Harris, Sr. Data Analyst, CPCA. Numbers are based on 2016 OSHPD data.