

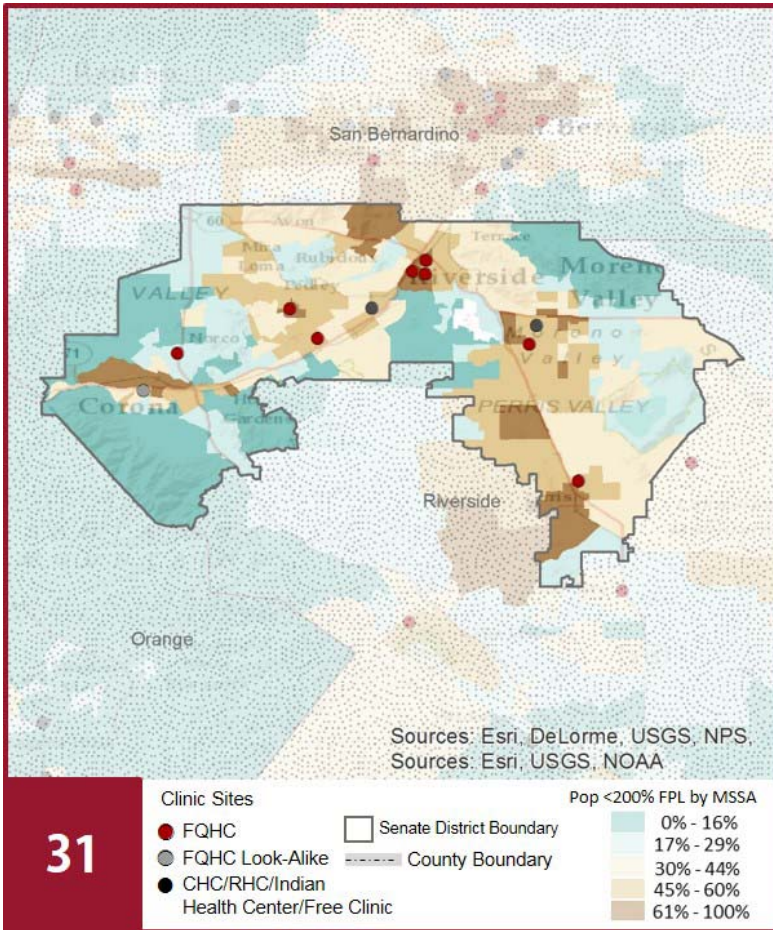
CALIFORNIA COMMUNITY HEALTH CENTERS

2018 | Senate District 31
 Senator Richard D. Roth



The Clinics

Community Clinics and Health Centers (CCHCs) are nonprofit health care practices located in low income and medically underserved areas. CCHCs share a common mission to serve everyone who walks through their doors, regardless of their ability to pay. The term CCHC include Federally Qualified Health Centers (FQHC), FQHC Look-Alikes, Migrant Health Centers, Rural and Frontier Health Centers, and Free Clinics. CCHCs are an essential segment of the safety net. In many California Counties, they provide a significant proportion of comprehensive primary care services to those who are publicly subsidized or uninsured.



Clinic Types

Total Number of CCHCs	11
Federally Qualified Health Center sites	8
Federally Qualified Health Center Look-Alike sites	1
95-210 Rural Health Center sites	0

The Patients

Demographics

Patients	70,979	
Female	49,890	70%
Male	21,089	30%
19 Years & Under	20,128	28%
Encounters	198,220	

Poverty Levels

Under 100%	38,537	54%
100-138%	11,232	16%
139-200%	3,018	4%
201-400%	1,040	1%
Above 400%	456	1%
Unknown	16,696	24%

31

Race			Ethnicity			Age		
White (including Hispanic)	42,252	60%	Hispanic	41,893	59%	Less than 1 Year	771	1%
Black	7,109	10%	Non-Hispanic	22,817	32%	1 - 4 Years	2,950	4%
Native American	523	1%	Unknown	6,269	9%	5 - 12 Years	7,882	11%
Asian/ Pacific Islander	2,406	3%				13 - 14 Years	1,614	2%
More Than One Race	647	1%				15 - 19 Years	6,911	10%
Other/ Unknown	18,042	25%				20 - 34 Years	30,647	43%
						35 - 44 Years	8,295	12%
						45 - 64 Years	10,076	14%
						Over 65 Years	1,833	3%

Migratory Workers

Patients	450	1%
Encounters	1,338	1%

Language

Primary Language Not English	24%
------------------------------	-----

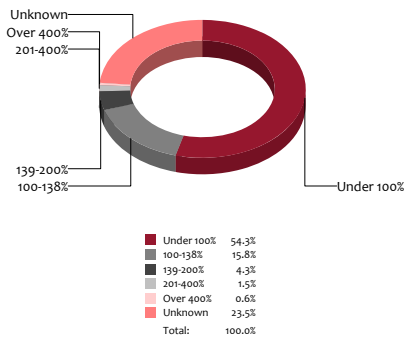
CALIFORNIA COMMUNITY HEALTH CENTERS

2018 | Senate District 31 Senator Richard D. Roth



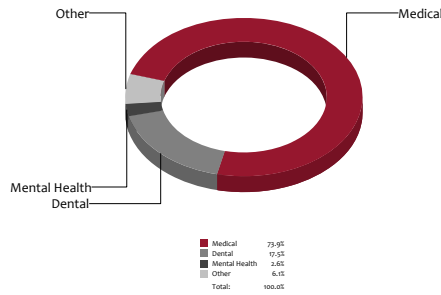
Poverty Level

Patients



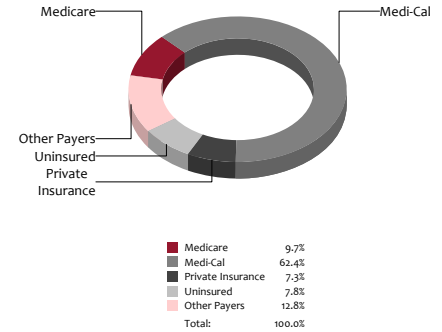
Services

Visits



Payment Source

Visits



The Services

	Provider FTEs		Encounters	
Medical*	39.6	65%	146,416	74%
Dental*	12.2	20%	34,718	18%
Mental Health ***	3.2	5%	5,064	3%
Other****	5.6	9%	12,022	6%
Total	61		198,220	

Health Centers providing other significant services

Vision Services	2	18%
Basic Lab Services	7	64%
Radiology Services	0	0%
Pharmacy Services	1	9%
Urgent Care Services	2	18%
Substance Abuse Services	2	18%
Womens Health Services	7	64%

*Physicians, physician assistants, family nurse practitioners, certified nurse midwives, visiting nurses. **Dentists and Registered Dental Hygienists
Psychiatrists, clinical psychologists, and licensed clinical social workers. *Other providers billable to Medi-Cal

Revenue and Utilization by Payment Source

Program	Patients ^ ^		Encounters		Revenue	
	Count	%	Count	%	Count	%
Medicare	2,312	3%	19,293	10%	Gross Patient Revenue	\$47,587,705
Medi-Cal	41,809	59%	123,654	62%	Net Patient Revenue	\$30,946,366
Private Insurance	6,742	9%	14,437	7%	Other Operating Revenue	
Uninsured Services ^ ^ ^ ^	19,100	27%	15,386	8%	Federal	\$4,629,220
All County ^ ^ ^	0	0%	0	0%	State	\$207,976
Covered California	197	0%	387	0%	County/Local	\$150,756
PACE Patients	0	0%	0	0%	Private	\$419,823
Other	819	1%	670	0%	Donations/Contributions	\$113,099
BCCCP ^ ^	627	1%	886	0%	Other	\$220,069
CHDP ^ ^	191	0%	207	0%	Total Operating Revenue	
Family PACT ^ ^	13,537	19%	23,300	12%	\$ 36,687,309	

^ ^ Patient counts for Episodic programs (BCCP, CHDP, Family PACT) are duplicated. BCCCP = Breast and Cervical Cancer Control Program; CHDP = Child Health and Disability Prevention Program;
Family PACT = Family Planning Access Care and Treatment program.
^ ^ ^ County Indigent/CMSP/MISP, San Diego County Medical Plan, LA County Public/Private Partnership, and Other County Programs.
^ ^ ^ ^ Free and Self-Pay/ Sliding Fee Programs.

Because of their philosophy and by necessity, CCHCs have been vigilant about controlling the cost of care, and the untoward effects of deferred or neglected care, by promoting a broad range of preventive health services specifically targeted to the particular needs of their communities and patient populations. The federal Office of Management and Budget has found the Health Center Program to be one of the ten most effective federal programs and the most effective program under the federal Health and Human Services Agency. Despite enormous challenges, CCHCs have persisted in their mission to serve their local communities.

All information compiled by Jeanita Harris, Sr. Data Analyst, CPCA. Numbers are based on 2016 OSHPD data.