



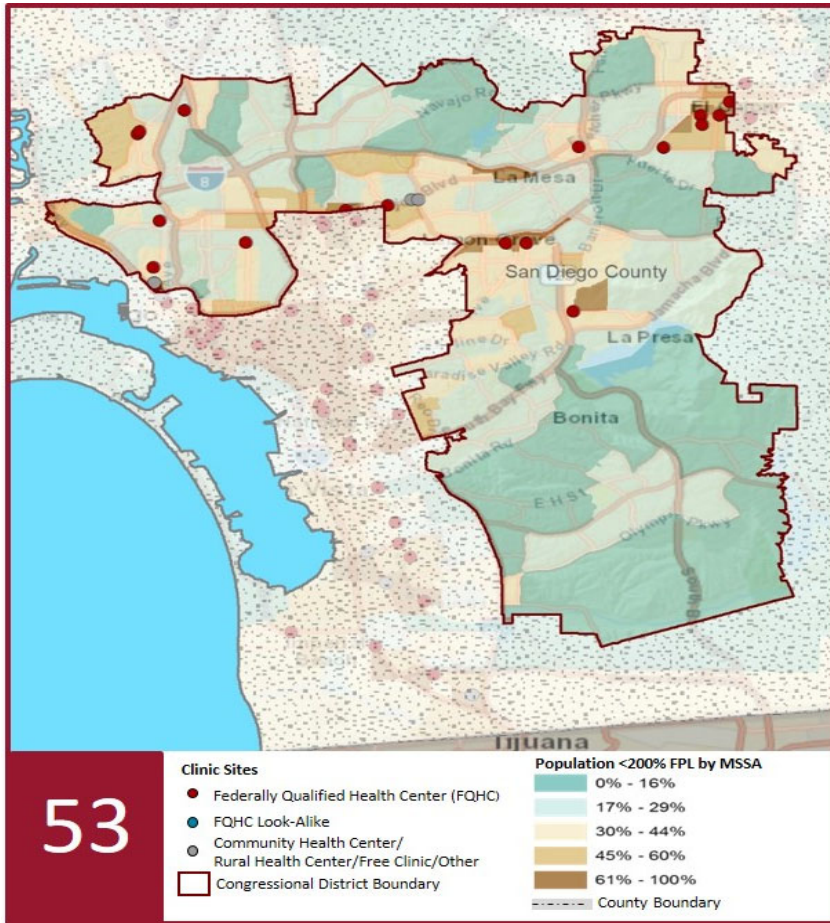
2019 Profile of Community Health Centers Congressional District 53

Representative Susan Davis



The Clinics

Community Health Centers (CHCs) are nonprofit health care practices located in low income and medically underserved areas. CHCs share a common mission to serve everyone who walks through their doors, regardless of their ability to pay. The term CHC include Federally Qualified Health Centers (FQHC), FQHC Look-Alikes, Migrant Health Centers, Rural and Frontier Health Centers, and Free Clinics. CHCs are an essential segment of the safety net. In many California Counties, they provide a significant proportion of comprehensive primary care services to those who are publicly subsidized or uninsured.



Clinic Types

Total Number of CHCs	23
Federally Qualified Health Center Sites (FQHC)	18
FQHC Look-Alike Sites	0
Rural Health Center Sites (95-210 RHC)	0

Demographics

Patients	245,234	
Male	99,591	41%
Female	145,643	59%
19 Years & Under	68,236	28%
Encounters	864,607	

Poverty Level

Under 100%	143,433	58%
100 - 138%	19,624	8%
139 - 200%	11,772	5%
201 - 400%	5,342	2%
Over 400%	1,716	1%
Unknown	63,347	26%

Age

Less than 1 Year	5,159	2%
1 - 4 Years	14,731	6%
5 - 12 Years	26,371	11%
13 - 14 Years	5,641	2%
15 - 19 Years	16,334	7%
20 - 34 Years	71,205	29%
35 - 44 Years	32,657	13%
45 - 64 Years	58,186	24%
More than 65 Years	14,950	6%

Race

White (non-hispanic)	139,693	57%
Black	19,068	8%
Native American	2,725	1%
Asian/Pacific Islander	15,373	6%
More than one Race	5,098	2%
Other/ Unknown	63,277	26%

Ethnicity

Hispanic	91,447	37%
Non-Hispanic	117,283	48%
Unknown	36,504	15%
AG/Migratory Workers		
Patients	2,056	1%
Encounters	8,108	1%

Language

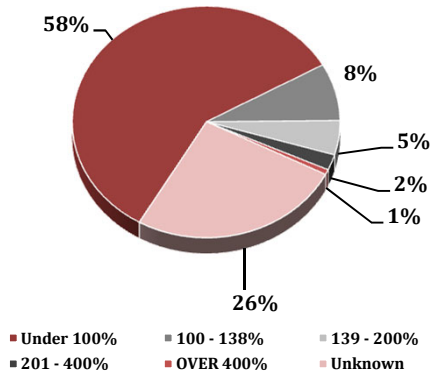
Primary Language Not English	34%
------------------------------	-----

2019 Profile of Community Health Centers Congressional District 53

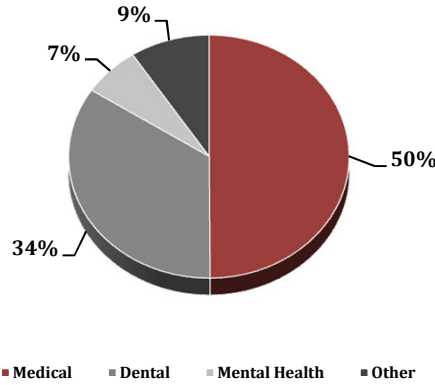
Representative Susan Davis



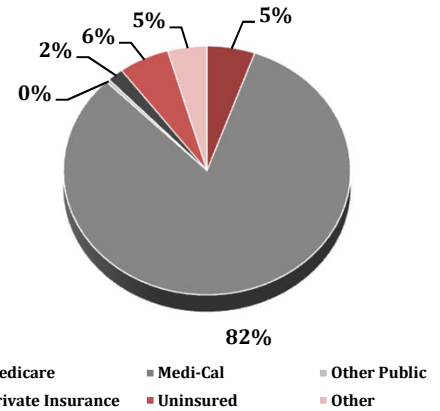
Federal Poverty Level



Services



Payment Source



% of CHCs providing other significant services

Vision Services	17%
Basic Lab Services	78%
Radiology Services	9%
Pharmacy Services	26%
Urgent Care Services	4%
Substance Abuse Services	26%
Women's Health Services	78%

Services	Provider FTEs	Encounters
Medical*	141.6 48%	431,488 50%
Dental**	34.5 12%	296,449 34%
Mental Health***	49.7 17%	57,403 7%
Other****	67.9 23%	79,267 9%

*Physicians; Physician Assistants; Family Nurse Practitioners; Certified Nurse Midwives and Visiting Nurses.
 Psychiatrists; Clinical Psychologists; Licensed Clinical Social Workers. *Other providers billable to Medi-Cal and other CPSP providers not listed.

Revenue and Utilization by Payment Source

Program	Patients**	Encounters
Medicare	10,042 4%	45,586 5%
Medi-Cal	183,222 75%	693,604 80%
Other Public	7 0%	3,524 0%
Private Insurance	7,209 3%	15,331 2%
Uninsured Services	41,355 17%	48,170 6%
Covered California	2,957 1%	9,974 1%
PACE	366 0%	- 0%
Other	76 0%	148 0%
BCCCP**	1,623 1%	2,384 0%
CHDP**	1,178 0%	2,506 0%
Family PACT**	13,561 6%	22,362 3%

Gross Patient Revenue (charged)
\$304,294,455
 Net Patient Revenue (collected)
\$213,337,747

Other Operating Revenue	
Federal Funds	\$ 17,740,186
State Funds	\$ 1,526,699
County/Local Funds	\$ 6,473,082
Private	\$ 3,873,200
Donations/Contributions	\$ 746,806
Other	\$ 17,074,301

TOTAL OPERATING REVENUE
\$260,772,021

**Patient counts for Episodic programs (BCCCP, CHDP, Family PACT and Other Episodic Programs) are duplicated. Episodic Programs include Breast Cancer Programs such as the Breast Cancer Early Detection Program (BCCCP) and the Breast and Cervical Cancer Control Program (BCCCP); CHDP = Child Health and Disability Prevention Program; Family PACT = Family Planning Access Care and Treatment Program and other payers covered by a grant.

Because of their philosophy and by necessity, CCHCs have been vigilant about controlling the cost of care, and the untoward effects of deferred or neglected care, by promoting a broad range of preventive health services specifically targeted to the particular needs of their communities and patient populations. The Federal Office of Management and Budget has found the Health Center Program to be one of the ten most effective federal programs and the most effective program under the federal Health and Human Services Agency. Despite enormous challenges, CCHCs have persisted in their mission to serve their local communities.

Profile created by Jeanita Harris, Sr. Data Analyst, CPCA. Data is based on 2017 OSHPD AUR.