



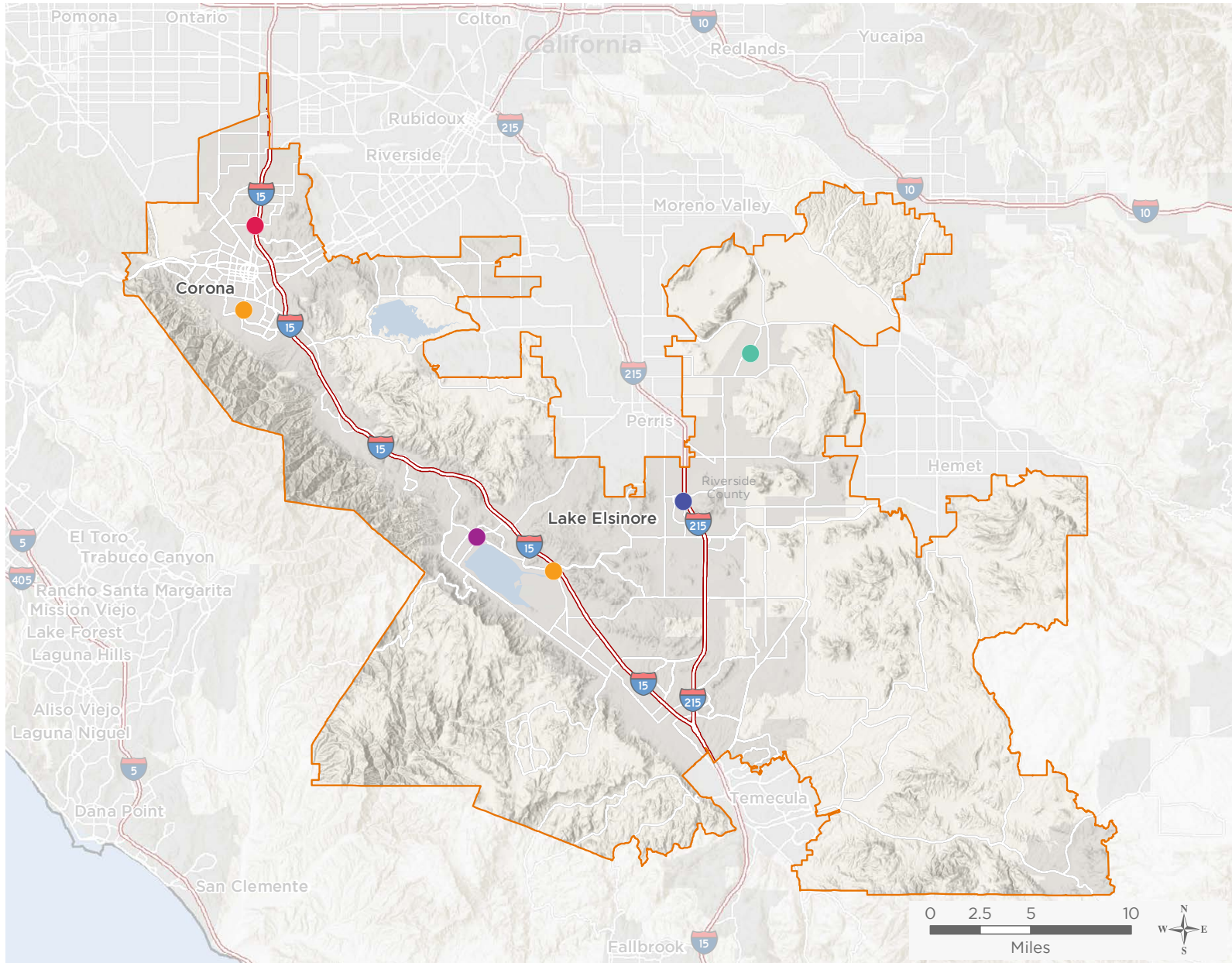
NATIONAL ASSOCIATION OF  
Community Health Centers

# Representative Ken Calvert

116th United States Congress

California's **42<sup>ND</sup>** Congressional District

The 5 federally-funded health center organizations with a presence in California's 42nd Congressional District leverage **\$23,306,920** in federal investments to serve **382,056** patients.



**8**

## NUMBER OF DELIVERY SITES IN CONGRESSIONAL DISTRICT

- Federally-funded site (each color represents one organization)
- 116th Congressional District Boundaries
- County Boundaries
- City or Town
- Major Highways
- Highways
- Major Roads

Notes | Delivery sites represent locations of organizations funded by the federal Health Center Program. Some locations may overlap due to scale or may otherwise not be visible when mapped. Federal investments represent the total funding from the federal Health Center Program to grantees with a presence in the state in 2017.

Sources | Federally-Funded Delivery Site Locations: data.HRSA.gov, December 3, 2018.  
Health Center Patients and Federal Funding | 2017 Uniform Data System, Bureau of Primary Health Care, HRSA.

© National Association of Community Health Centers, 2019. For more information, please contact [federalaffairs@nachc.org](mailto:federalaffairs@nachc.org).



8

### NUMBER OF DELIVERY SITES IN CONGRESSIONAL DISTRICT

(main organization in bold)

- BORREGO COMMUNITY HEALTH FOUNDATION**  
Jay Hoffman Health Center - 29490 Lakeview Ave Nuevo, CA 92567-9705
- CENTRAL CITY COMMUNITY HEALTH CENTER, INC.**  
Central City Community Health Center - Mobile Medical Unit #4 - 1860 Hamner Ave Norco, CA 92860-2945  
Central City Community Health Center - Norco - 1860 Hamner Ave Norco, CA 92860-2945
- NEIGHBORHOOD HEALTHCARE**  
Neighborhood Healthcare - Menifee - 26926 Cherry Hills Blvd Ste B Menifee, CA 92586-2500
- RIVERSIDE COUNTY HEALTH SYSTEM**  
Corona Community Health Center - 2813 S Main St Corona, CA 92882-5942  
Lake Elsinore Family Care Center - 2499 E Lakeshore Dr Lake Elsinore, CA 92530-4446
- VISTA COMMUNITY CLINIC**  
VCC Mobile Dental Clinic - Lake Elsinore - 30195 Fraser Dr Lake Elsinore, CA 92530-7006  
VCC: Lake Elsinore - 30195 Fraser Dr Lake Elsinore, CA 92530-7006