



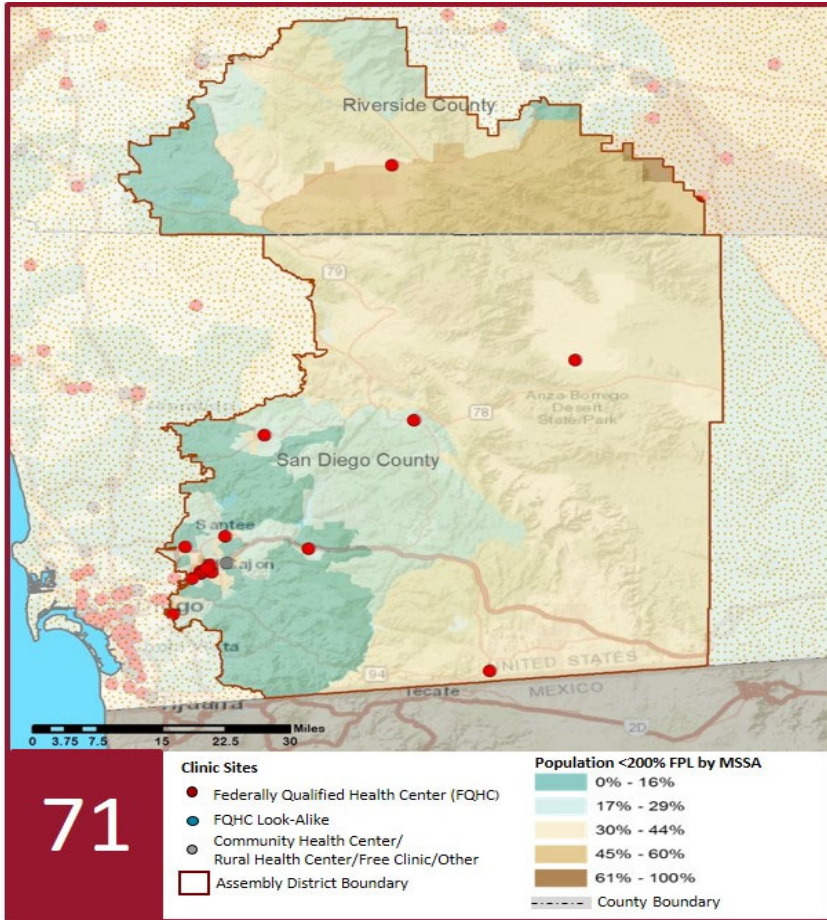
2019 Profile of Community Health Centers Assembly District 71

Assemblymember Randy Voepel



The Clinics

Community Health Centers (CHCs) are nonprofit health care practices located in low income and medically underserved areas. CHCs share a common mission to serve everyone who walks through their doors, regardless of their ability to pay. The term CHC include Federally Qualified Health Centers (FQHC), FQHC Look-Alikes, Migrant Health Centers, Rural and Frontier Health Centers, and Free Clinics. CHCs are an essential segment of the safety net. In many California Counties, they provide a significant proportion of comprehensive primary care services to those who are publicly subsidized or uninsured.



Clinic Types

Total Number of CHCs	18
Federally Qualified Health Center Sites (FQHC)	17
FQHC Look-Alike Sites	0
Rural Health Center Sites (95-210 RHC)	4

Demographics

Patients	162,925	
Male	65,454	40%
Female	97,471	60%
19 Years & Under	52,566	32%
Encounters	602,529	

Poverty Level

Under 100%	81,193	50%
100 - 138%	10,917	7%
139 - 200%	6,155	4%
201 - 400%	3,047	2%
Over 400%	981	1%
Unknown	60,632	37%

Age

Less than 1 Year	3,563	2%
1 - 4 Years	10,594	7%
5 - 12 Years	20,762	13%
13 - 14 Years	4,722	3%
15 - 19 Years	12,925	8%
20 - 34 Years	39,034	24%
35 - 44 Years	20,267	12%
45 - 64 Years	38,685	24%
More than 65 Years	12,373	8%

Race

White (non-hispanic)	94,388	58%
Black	7,285	4%
Native American	998	1%
Asian/Pacific Islander	6,492	4%
More than one Race	2,488	2%
Other/ Unknown	51,274	31%

Ethnicity

Hispanic	54,836	34%
Non-Hispanic	77,010	47%
Unknown	31,079	19%
AG/Migratory Workers		
Patients	1,525	1%
Encounters	5,842	1%

Language

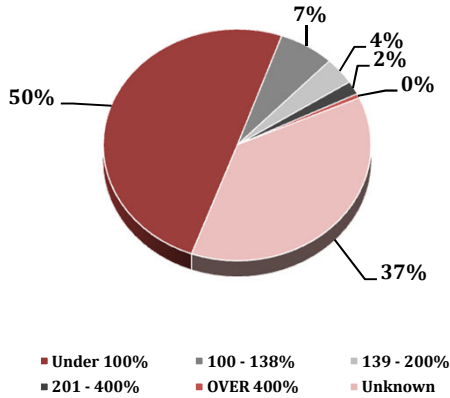
Primary Language Not English 42%

2019 Profile of Community Health Centers Assembly District 71

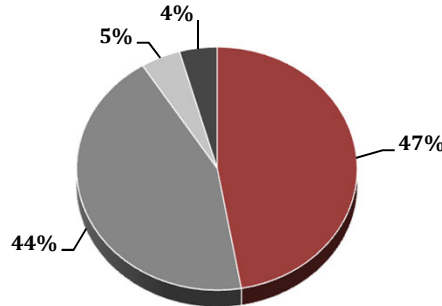
Assemblymember Randy Voepel



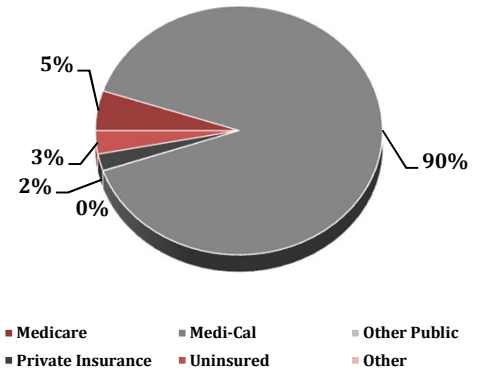
Federal Poverty Level



Services



Payment Source



Services	Provider FTEs	Encounters
Medical*	77.2 58%	284,725 47%
Dental**	14.3 11%	264,244 44%
Mental Health***	21.1 16%	27,558 5%
Other****	20.8 16%	26,135 4%

% of CHCs providing other significant services

Vision Services	11%
Basic Lab Services	61%
Radiology Services	22%
Pharmacy Services	11%
Urgent Care Services	11%
Substance Abuse Services	11%
Women's Health Services	67%

*Physicians; Physician Assistants; Family Nurse Practitioners; Certified Nurse Midwives and Visiting Nurses.
Psychiatrists; Clinical Psychologists; Licensed Clinical Social Workers. **Other providers billable to Medi-Cal and other CPSP providers not listed.

Revenue and Utilization by Payment Source

Program	Patients**	Encounters
Medicare	6,751 4%	30,196 5%
Medi-Cal	133,673 82%	524,618 87%
Other Public	6 0%	250 0%
Private Insurance	4,590 3%	12,830 2%
Uninsured Services	16,558 10%	17,829 3%
Covered California	1,119 1%	3,879 1%
PACE	- 0%	- 0%
Other	228 0%	433 0%
BCCCP**	1,057 1%	1,343 0%
CHDP**	738 0%	1,598 0%
Family PACT**	5,648 3%	9,553 2%

Gross Patient Revenue (charged)
\$204,460,012
Net Patient Revenue (collected)
\$129,853,500

Other Operating Revenue	
Federal Funds	\$ 6,417,935
State Funds	\$ 56,768
County/Local Funds	\$ 2,782,369
Private	\$ 2,018,003
Donations/Contributions	\$ 524,782
Other	\$ 3,233,682

TOTAL OPERATING REVENUE
\$15,033,539

**Patient counts for Episodic programs (BCCCP, CHDP, Family PACT and Other Episodic Programs) are duplicated. Episodic Programs include Breast Cancer Programs such as the Breast Cancer Early Detection Program (BCCCP) and the Breast and Cervical Cancer Control Program (BCCCP); CHDP = Child Health and Disability Prevention Program; Family PACT = Family Planning Access Care and Treatment Program and other payers covered by a grant.

Because of their philosophy and by necessity, CCHCs have been vigilant about controlling the cost of care, and the untoward effects of deferred or neglected care, by promoting a broad range of preventive health services specifically targeted to the particular needs of their communities and patient populations. The Federal Office of Management and Budget has found the Health Center Program to be one of the ten most effective federal programs and the most effective program under the federal Health and Human Services Agency. Despite enormous challenges, CCHCs have persisted in their mission to serve their local communities.

Profile created by Jeanita Harris, Sr. Data Analyst, CPCA. Data is based on 2017 OSHPD AUR.