



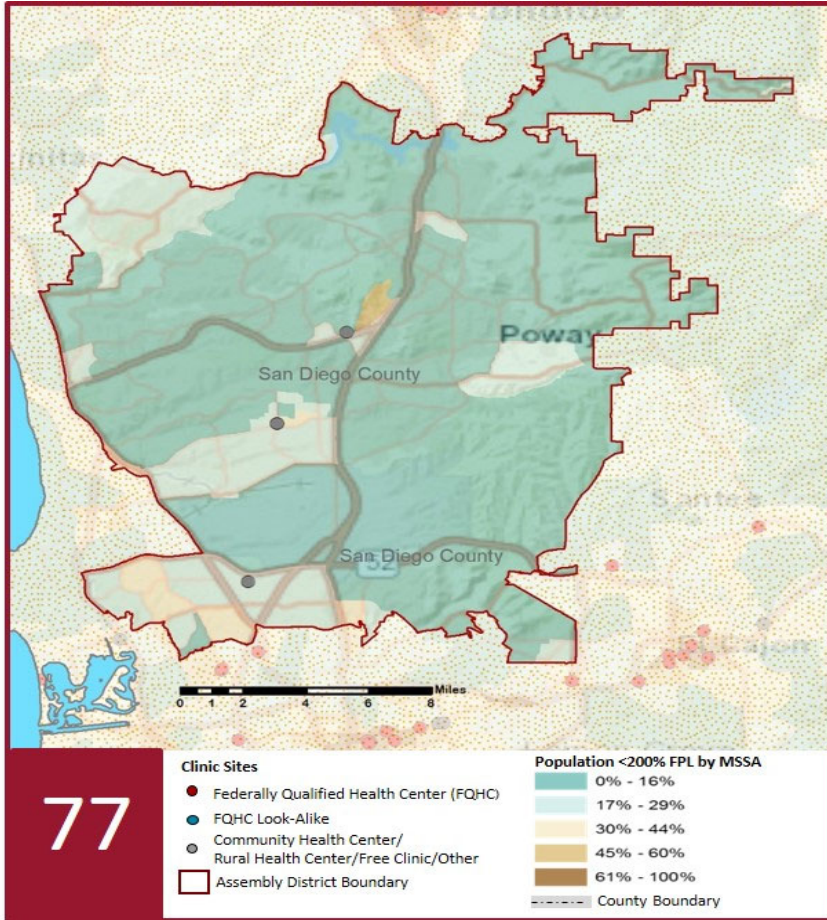
# 2019 Profile of Community Health Centers Assembly District 77

Assemblymember Brian Maienschein



## The Clinics

Community Health Centers (CHCs) are nonprofit health care practices located in low income and medically underserved areas. CHCs share a common mission to serve everyone who walks through their doors, regardless of their ability to pay. The term CHC include Federally Qualified Health Centers (FQHC), FQHC Look-Alikes, Migrant Health Centers, Rural and Frontier Health Centers, and Free Clinics. CHCs are an essential segment of the safety net. In many California Counties, they provide a significant proportion of comprehensive primary care services to those who are publicly subsidized or uninsured.



### Clinic Types

Total Number of CHCs	4
Federally Qualified Health Center Sites (FQHC)	1
FQHC Look-Alike Sites	0
Rural Health Center Sites (95-210 RHC)	0

### Demographics

Patients	24,237	
Male	5,422	22%
Female	18,815	78%
19 Years & Under	3,006	12%
Encounters	41,870	

### Poverty Level

Under 100%	13,007	54%
100 - 138%	2,676	11%
139 - 200%	2,060	8%
201 - 400%	1,721	7%
Over 400%	647	3%
Unknown	4,126	17%

### Age

Less than 1 Year	76	0%
1 - 4 Years	242	1%
5 - 12 Years	582	2%
13 - 14 Years	145	1%
15 - 19 Years	1,961	8%
20 - 34 Years	13,420	55%
35 - 44 Years	2,981	12%
45 - 64 Years	3,367	14%
More than 65 Years	1,463	6%

### Race

White (non-hispanic)	10,407	43%
Black	891	4%
Native American	48	0%
Asian/Pacific Islander	6,192	26%
More than one Race	315	1%
Other/ Unknown	6,384	26%

### Ethnicity

Hispanic	4,646	19%
Non-Hispanic	17,229	71%
Unknown	2,362	10%
<b>AG/Migratory Workers</b>		
Patients	1,354	6%
Encounters	4,756	11%

### Language

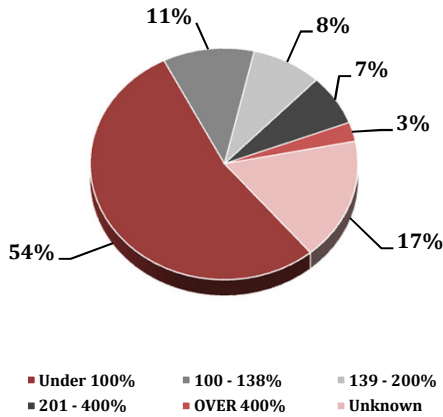
Primary Language Not English	11%
------------------------------	-----

# 2019 Profile of Community Health Centers Assembly District 77

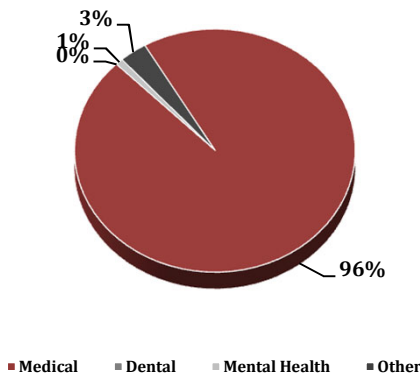
Assemblymember Brian Maienschein



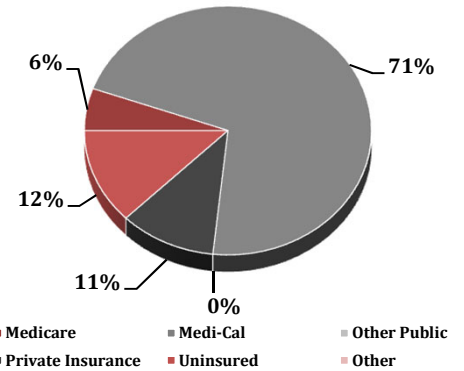
Federal Poverty Level



Services



Payment Source



% of CHCs providing other significant services

Vision Services	0%
Basic Lab Services	75%
Radiology Services	50%
Pharmacy Services	50%
Urgent Care Services	25%
Substance Abuse Services	0%
Women's Health Services	100%

Services	Provider FTEs	Encounters
Medical*	18.9 82%	40,185 96%
Dental**	- 0%	- 0%
Mental Health***	1.0 4%	370 1%
Other****	3.3 14%	1,338 3%

\*Physicians; Physician Assistants; Family Nurse Practitioners; Certified Nurse Midwives and Visiting Nurses.  
\*\*Psychiatrists; Clinical Psychologists; Licensed Clinical Social Workers. \*\*\*\*Other providers billable to Medi-Cal and other CPSP providers not listed.

## Revenue and Utilization by Payment Source

Program	Patients**	Encounters
Medicare	1,063 4%	1,369 3%
Medi-Cal	9,119 38%	17,837 43%
Other Public	- 0%	- 0%
Private Insurance	2,057 8%	2,725 7%
Uninsured Services	11,281 47%	3,116 7%
Covered California	594 2%	804 2%
PACE	- 0%	- 0%
Other	123 1%	1,427 3%
BCCCP**	40 0%	57 0%
CHDP**	8 0%	8 0%
Family PACT**	8,998 37%	14,527 35%

## Gross Patient Revenue (charged)

\$10,154,889

## Net Patient Revenue (collected)

\$5,773,380

## Other Operating Revenue

Federal Funds	\$ 2,690,841
State Funds	\$ -
County/Local Funds	\$ -
Private	\$ -
Donations/Contributions	\$ 61,120
Other	\$ -

## TOTAL OPERATING REVENUE

\$2,751,961

\*\*Patient counts for Episodic programs (BCCCP, CHDP, Family PACT and Other Episodic Programs) are duplicated. Episodic Programs include Breast Cancer Programs such as the Breast Cancer Early Detection Program (BCCCP) and the Breast and Cervical Cancer Control Program (BCCCP); CHDP = Child Health and Disability Prevention Program; Family PACT = Family Planning Access Care and Treatment Program and other payers covered by a grant.

Because of their philosophy and by necessity, CCHCs have been vigilant about controlling the cost of care, and the untoward effects of deferred or neglected care, by promoting a broad range of preventive health services specifically targeted to the particular needs of their communities and patient populations. The Federal Office of Management and Budget has found the Health Center Program to be one of the ten most effective federal programs and the most effective program under the federal Health and Human Services Agency. Despite enormous challenges, CCHCs have persisted in their mission to serve their local communities.

Profile created by Jeanita Harris, Sr. Data Analyst, CPCA. Data is based on 2017 OSHPD AUR.