



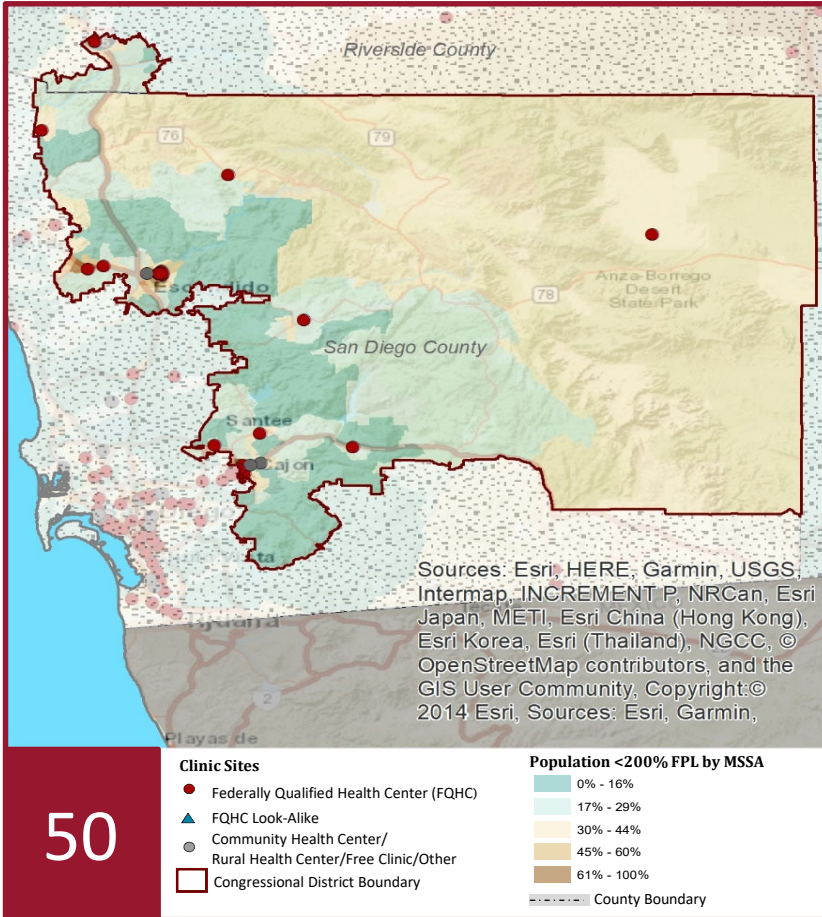
2021 Profile of Community Health Centers Congressional District 50

Representative Darrell E. Issa



The Clinics

Community Health Centers (CHCs) are nonprofit health care practices located in low income and medically underserved areas. CHCs share a common mission to serve everyone who walks through their doors, regardless of their ability to pay. The term CHC include Federally Qualified Health Centers (FQHC), FQHC Look-Alikes, Migrant Health Centers, Rural and Frontier Health Centers, and Free Clinics. CHCs are an essential segment of the safety net. In many California Counties, they provide a significant proportion of comprehensive primary care services to those who are publicly subsidized or uninsured.



Clinic Types	
Total Number of CHCs	22
Federally Qualified Health Center Sites (FQHC)	19
FQHC Look-Alike Sites	0
Rural Health Center Sites (95-210 RHC)	1

Demographics	
Patients	159,146
Male	59,725 38%
Female	99,421 62%
19 Years & Under	51,006 32%
Encounters	586,681

Poverty Level	
Under 100%	74,697 47%
100 - 138%	17,494 11%
139 - 200%	13,036 8%
201 - 400%	3,867 2%
Over 400%	1,744 1%
Unknown	48,308 30%

Age	
Less than 1 Year	3,264 2%
1 - 4 Years	9,605 6%
5 - 12 Years	19,400 12%
13 - 14 Years	5,159 3%
15 - 19 Years	13,578 9%
20 - 34 Years	42,278 27%
35 - 44 Years	20,146 13%
45 - 64 Years	34,678 22%
More than 65 Years	11,038 7%

Race

White	8,632	5%
Hispanic	87,105	55%
Black	4,603	3%
Native American	1,153	1%
Asian/Pacific Islander	6,167	4%
More than one Race	2,873	2%
Other/ Unknown	48,613	31%

Ethnicity

Hispanic	87,105	55%
Non-Hispanic	54,891	34%
Unknown	17,150	11%

Language

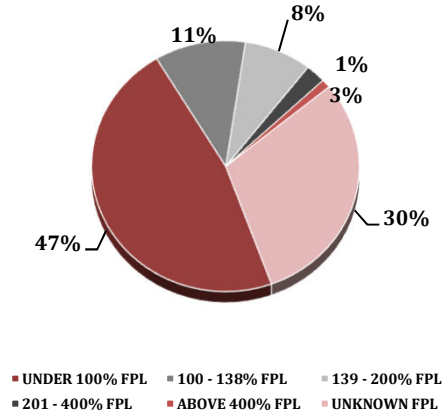
Primary Language Not English	37%
	100%

2021 Profile of Community Health Centers Congressional District 50

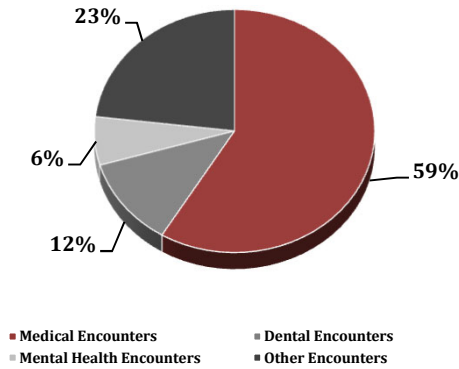
Representative Darrell E. Issa



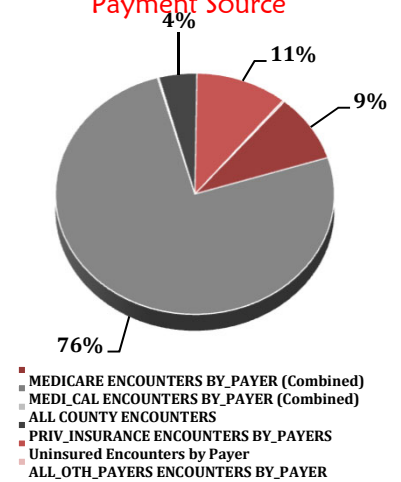
Federal Poverty Level



Services



Payment Source



Services	Provider FTEs	Encounters
Medical*	112.3 57%	403,765 69%
Dental**	27.7 14%	81,239 14%
Mental Health***	28.4 14%	44,246 8%
Other****	29.5 15%	159,146 27%

% of CHCs providing other significant services

Vision Services	27%
Basic Lab Services	91%
Radiology Services	23%
Pharmacy Services	23%
Urgent Care Services	9%
Substance Abuse Services	27%
Women's Health Services	68%

*Physicians; Physician Assistants; Family Nurse Practitioners; Certified Nurse Midwives and Visiting Nurses.
 **Psychiatrists; Clinical Psychologists; Licensed Clinical Social Workers.
 ****Other providers billable to Medi-Cal.

Revenue and Utilization by Payment Source

Program	Patients**	Encounters
Medicare	9,765 6%	48,537 8%
Medi-Cal	101,360 64%	406,655 69%
Other Public	110 0%	918 0%
Private Insurance	8,304 5%	23,730 4%
Uninsured Services	36,809 23%	57,326 10%
Covered California	2,019 1%	5,566 1%
PACE	238 0%	- 0%
Other	541 0%	1,243 0%
BCCCP**	4,042 3%	5,059 1%
CHDP**	605 0%	2,454 0%
Family PACT**	12,855 8%	21,678 4%

Gross Patient Revenue (charged)
\$181,933,641
 Net Patient Revenue (collected)
\$126,135,897

Other Operating Revenue	
Federal Funds	\$ 13,362,313
State Funds	\$ 166,415
County/Local Funds	\$ 104,834
Private	\$ 1,222,137
Donations/Contributions	\$ 248,717
Other	\$ 7,454,534

TOTAL OPERATING REVENUE
\$148,694,847

**Patient counts for Episodic programs (BCCCP, CHDP, Family PACT and Other Episodic Programs) are duplicated. Episodic Programs include Breast Cancer Programs such as the Breast Cancer Early Detection Program (BCCCP) and the Breast and Cervical Cancer Control Program (BCCCP); CHDP = Child Health and Disability Prevention Program; Family PACT = Family Planning Access Care and Treatment Program and other payers covered by a grant.

Because of their philosophy and by necessity, CCHCs have been vigilant about controlling the cost of care, and the untoward effects of deferred or neglected care, by promoting a broad range of preventive health services specifically targeted to the particular needs of their communities and patient populations. The Federal Office of Management and Budget has found the Health Center Program to be one of the ten most effective federal programs and the most effective program under the federal Health and Human Services Agency. Despite enormous challenges, CCHCs have persisted in their mission to serve their local communities.

Profile created by Jeanita Harris, Sr. Data Analyst, CPCA. Data is based on 2019 OSHPD AUR.