



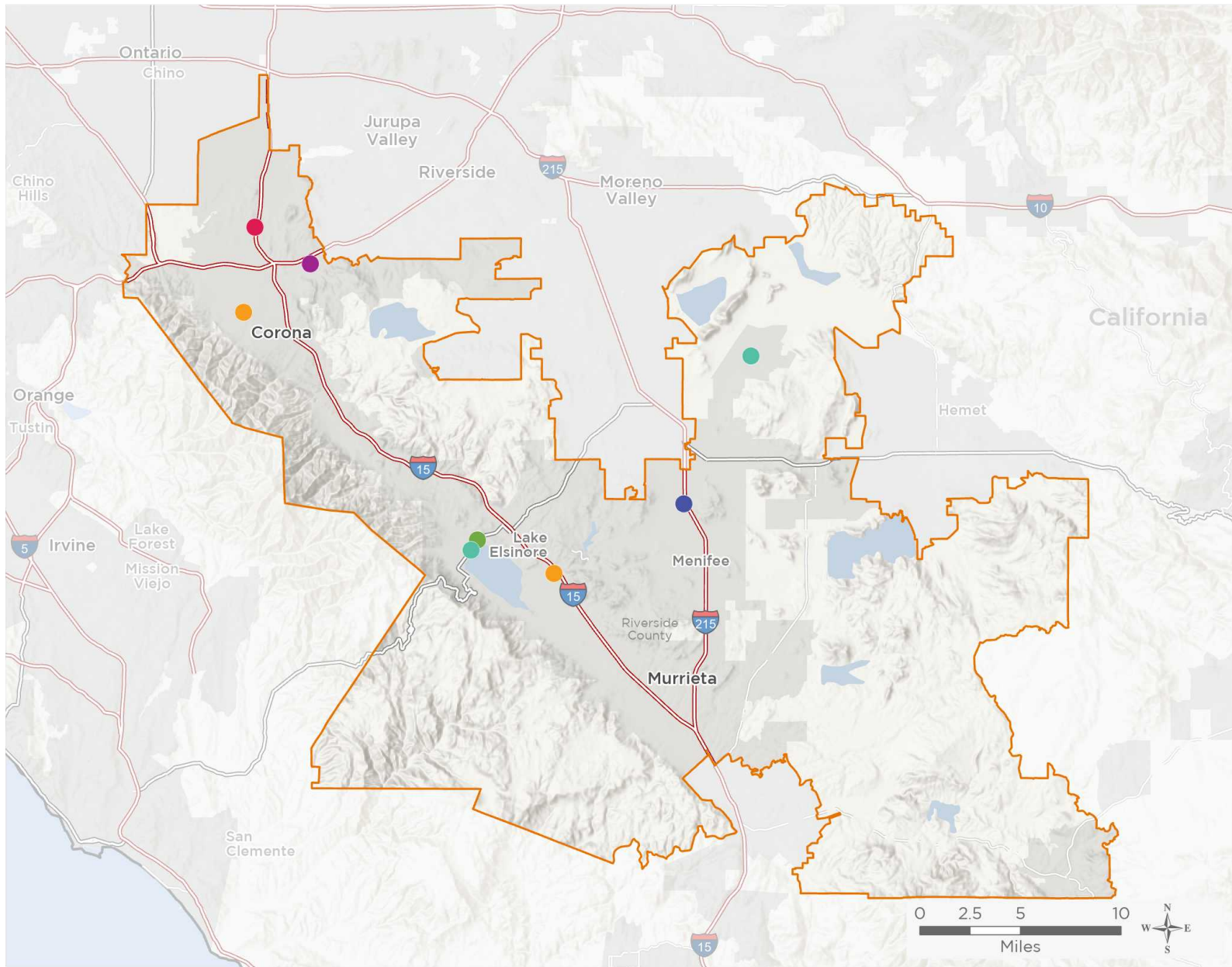
NATIONAL ASSOCIATION OF  
Community Health Centers

# Representative Ken Calvert

117th United States Congress

California's **42<sup>ND</sup>** Congressional District

The 6 federally-funded health center organizations with a presence in California's 42nd Congressional District leverage **\$24,596,664** in federal investments to serve **541,635** patients.



**11**

## NUMBER OF DELIVERY SITES IN CONGRESSIONAL DISTRICT

- Federally-funded site (each color represents one organization)
- 117th Congressional District Boundaries
- Major Highways
- Highways
- Major Roads
- County Boundaries
- City or Town

Notes | Delivery sites represent locations of organizations funded by the federal Health Center Program. Some locations may overlap due to scale or may otherwise not be visible when mapped. Federal investments represent the total funding from the federal Health Center Program to grantees with a presence in the state in 2019.

Sources | Federally-Funded Delivery Site Locations: data.HRSA.gov, November 16, 2020.  
Health Center Patients and Federal Funding | 2019 Uniform Data System, Bureau of Primary Health Care, HRSA.

© National Association of Community Health Centers, 2021. For more information, please contact [federalaffairs@nachc.org](mailto:federalaffairs@nachc.org).



11

### NUMBER OF DELIVERY SITES IN CONGRESSIONAL DISTRICT

(main organization in bold)

- BORREGO COMMUNITY HEALTH FOUNDATION**  
Jay Hoffman Health Center - 29490 Lakeview Ave Nuevo, CA 92567-9705  
Lake Elsinore Clinica Medica Familiar - 31739 Riverside Dr Ste A1 Lake Elsinore, CA 92530-7818
- CENTRAL CITY COMMUNITY HEALTH CENTER, INC.**  
Central City Community Health Center - Mobile Medical Unit #4 - 1860 Hamner Ave Norco, CA 92860-2945  
Central City Community Health Center - Norco - 1860 Hamner Ave Norco, CA 92860-2945
- NEIGHBORHOOD HEALTHCARE**  
Neighborhood Healthcare - Menifee - 26926 Cherry Hills Blvd Ste B Menifee, CA 92586-2500  
Neighborhood Healthcare - Menifee Suite C - 26926 Cherry Hills Blvd Ste C Menifee, CA 92586-2500
- RIVERSIDE COUNTY HEALTH SYSTEM**  
Corona Community Health Center - 2813 S Main St Fl 1 Corona, CA 92882-5942  
Lake Elsinore Family Care Center - 2499 E Lakeshore Dr Lake Elsinore, CA 92530-4411
- UNICARE COMMUNITY HEALTH CENTER, INC.**  
Unicare Community Health Center - Corona - 107 N Mckinley St Corona, CA 92879-6561
- VISTA COMMUNITY CLINIC**  
VCC Mobile Dental Clinic - Lake Elsinore - 30195 Fraser Dr Lake Elsinore, CA 92530-7006  
VCC: Lake Elsinore - 30195 Fraser Dr Lake Elsinore, CA 92530-7006