

The Impact of Health Centers in District 48

Representative Darrell Issa

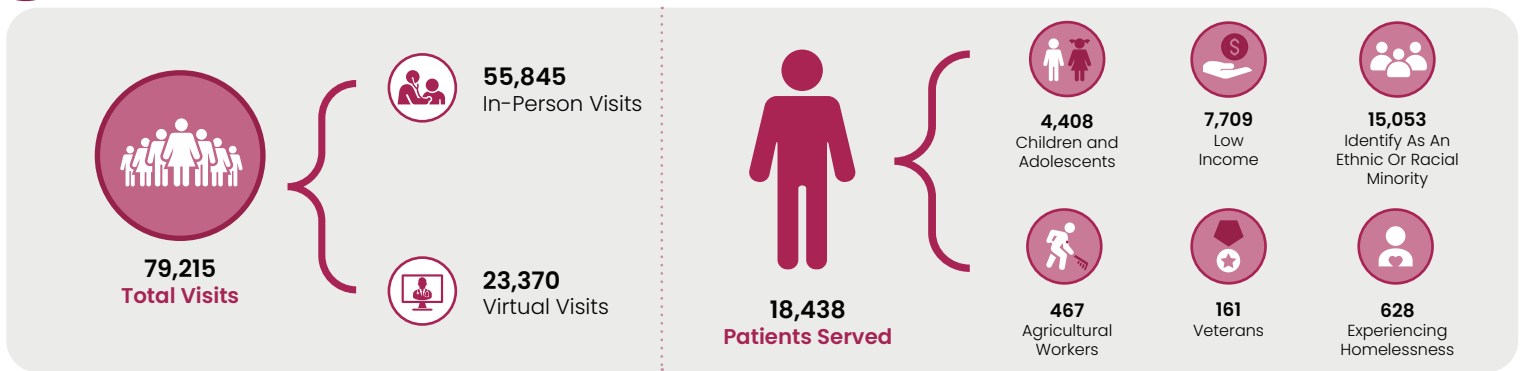


Health Center Partners of Southern California, serving San Diego, Riverside, and Imperial counties, has eight members in California's District 48. These members provide tremendous value and significant impact to the communities they serve through CARE FOR DIVERSE POPULATIONS, STATE-OF-THE-ART PRACTICES, and INTEGRATED CARE with a focus on MANAGING CHRONIC CONDITIONS, PREVENTATIVE CARE, and QUALITY HEALTH OUTCOMES.

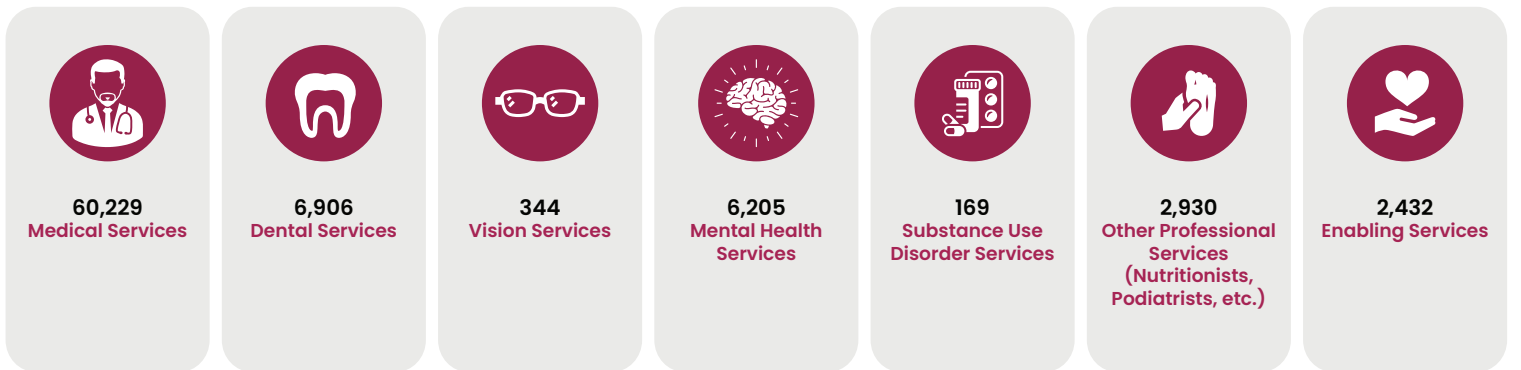
This report highlights their 2022 contributions.



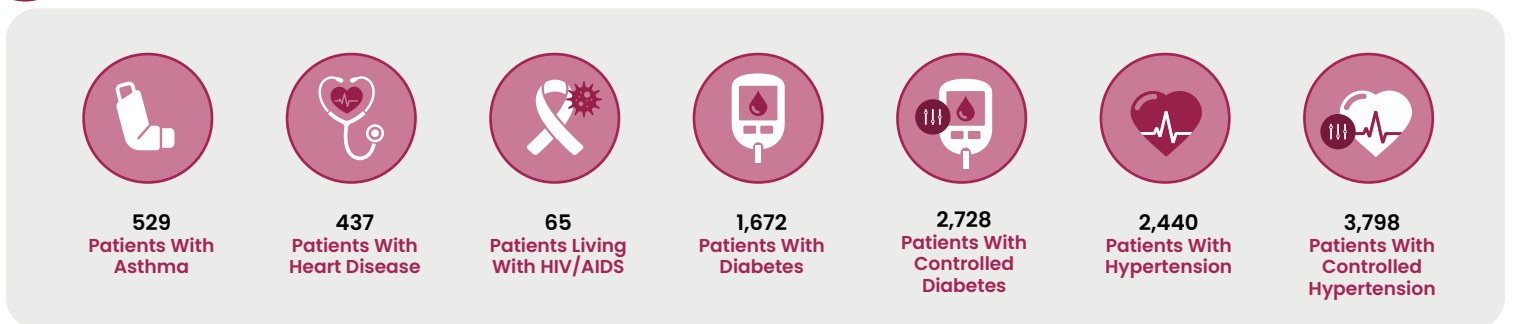
Care for Diverse Populations

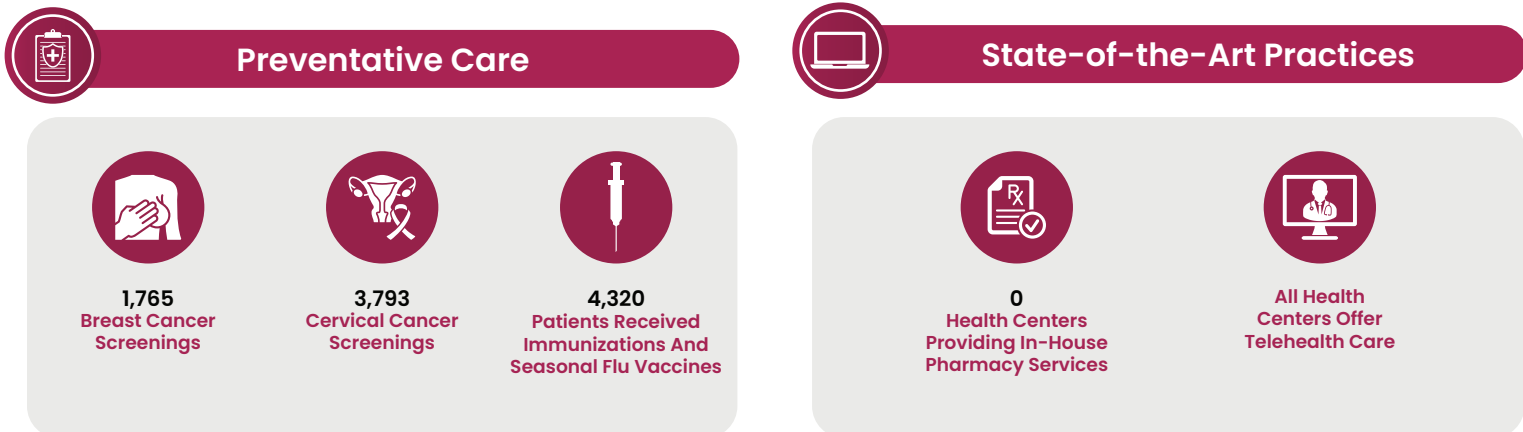


Integrated Care: Patient Visits



Managing Chronic Conditions





References and Data Sources

- “Low Income” refers to those with earnings at or below 200% of federal poverty level (FPL) guidelines.
- Care for Vulnerable Populations: Bureau of Primary Health Care, HRSA, OSHPD/HCAI, 2022 Uniform Data System.

Health Centers Included in This Analysis

1. Community Health Systems, Inc.
2. Indian Health Council, Inc.
3. Neighborhood Healthcare
4. Planned Parenthood of the Pacific Southwest, Inc.
5. San Ysidro Health
6. Southern Indian Health Council, Inc.
7. Sycuan Medical Dental Center
8. TrueCare