



Health Center Partners of Southern California, serving San Diego, Riverside, and Imperial counties, has six members in California's District 50. These members provide tremendous value and significant impact to the communities they serve through CARE FOR DIVERSE POPULATIONS, STATE-OF-THE-ART PRACTICES, and INTEGRATED CARE with a focus on MANAGING CHRONIC CONDITIONS, PREVENTATIVE CARE, and QUALITY HEALTH OUTCOMES.

This report highlights their **2022 contributions**.



Care for Diverse Populations



402,936
Total Visits



284,062
In-Person Visits



118,873
Virtual Visits



93,785
Patients Served



22,423
Children and Adolescents



39,212
Low Income



76,568
Identify As An Ethnic Or Racial Minority



2,377
Agricultural Workers



818
Veterans



3,193
Experiencing Homelessness



Integrated Care: Patient Visits



306,362
Medical Services



35,129
Dental Services



1,748
Vision Services



31,560
Mental Health Services



860
Substance Use Disorder Services



14,905
Other Professional Services
(Nutritionists, Podiatrists, etc.)



12,372
Enabling Services



Managing Chronic Conditions



2,691
Patients With Asthma



2,221
Patients With Heart Disease



329
Patients Living With HIV/AIDS



8,504
Patients With Diabetes



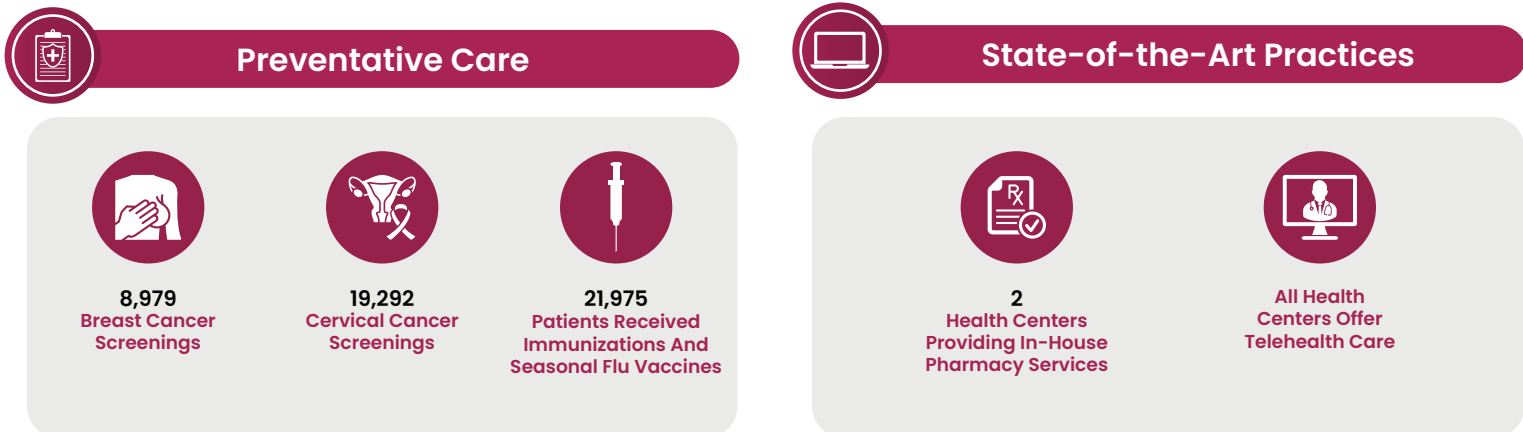
13,876
Patients With Controlled Diabetes



12,413
Patients With Hypertension



19,318
Patients With Controlled Hypertension



References and Data Sources

- “Low Income” refers to those with earnings at or below 200% of federal poverty level (FPL) guidelines.
- Care for Vulnerable Populations: Bureau of Primary Health Care, HRSA, OSHPD/HCAI, 2022 Uniform Data System.

Health Centers Included in This Analysis

1. Father Joe’s Villages, Village Health Center
2. Neighborhood Healthcare
3. Planned Parenthood of the Pacific Southwest, Inc.
4. San Diego American Indian Health Center
5. San Ysidro Health
6. TrueCare