



Health Center Partners of Southern California, serving San Diego, Riverside, and Imperial counties, has two members in Imperial County. These members provide tremendous value and significant impact to the communities they serve through CARE FOR DIVERSE POPULATIONS, STATE-OF-THE-ART PRACTICES, and INTEGRATED CARE with a focus on MANAGING CHRONIC CONDITIONS, PREVENTATIVE CARE, and QUALITY HEALTH OUTCOMES.

This report highlights their **2022 contributions**.



Care for Diverse Populations



188,693
Total Visits



133,026
In-Person Visits



55,668
Virtual Visits



43,919
Patients Served



10,501
Children and Adolescents



18,363
Low Income



35,856
Identify As An Ethnic Or Racial Minority



1,113
Agricultural Workers



383
Veterans



1,495
Experiencing Homelessness



Integrated Care: Patient Visits



143,468
Medical Services



16,451
Dental Services



818
Vision Services



14,779
Mental Health Services



403
Substance Use Disorder Services



6,980
Other Professional Services
(Nutritionists, Podiatrists, etc.)



5,794
Enabling Services



Managing Chronic Conditions



1,260
Patients With Asthma



1,040
Patients With Heart Disease



154
Patients Living With HIV/AIDS



3,982
Patients With Diabetes



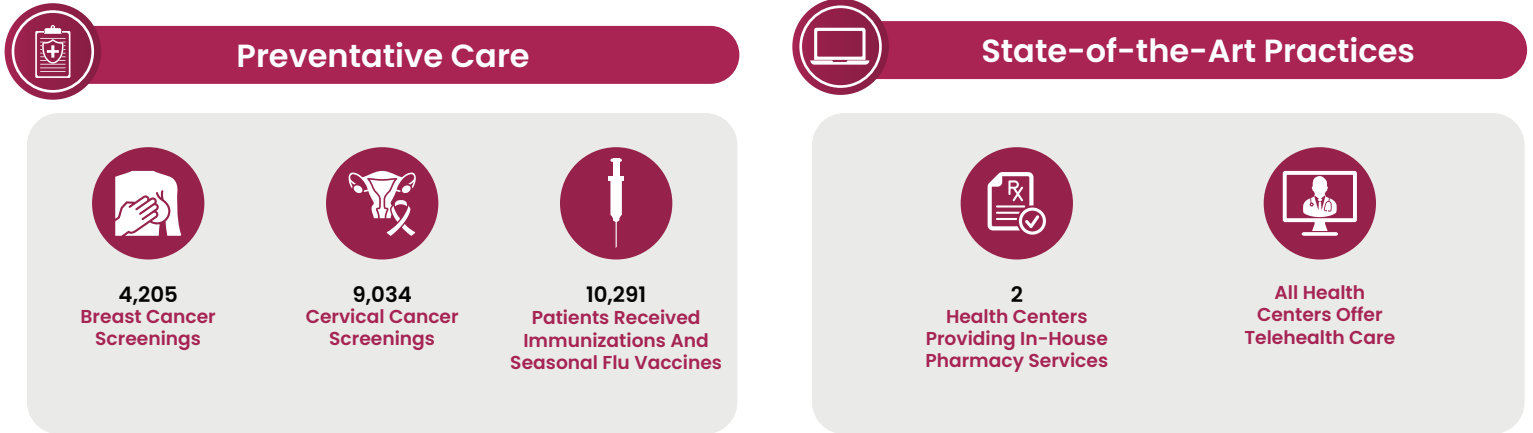
6,498
Patients With Controlled Diabetes



5,813
Patients With Hypertension



9,046
Patients With Controlled Hypertension



References and Data Sources

- “Low Income” refers to those with earnings at or below 200% of federal poverty level (FPL) guidelines.
- Care for Vulnerable Populations: Bureau of Primary Health Care, HRSA, OSHPD/HCAI, 2022 Uniform Data System.

Health Centers Included in This Analysis

1. Innercare
2. Planned Parenthood of the Pacific Southwest, Inc.