

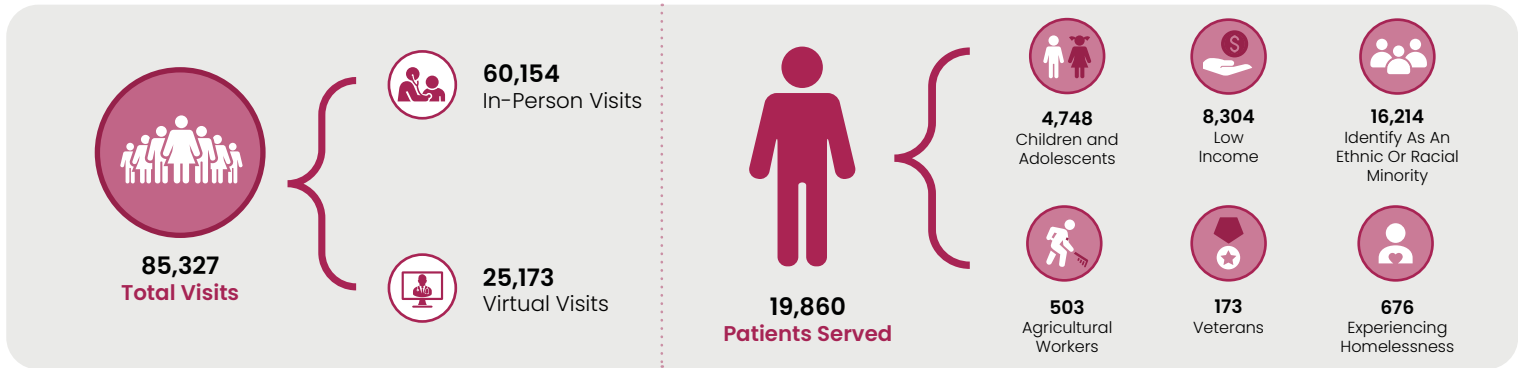


Health Center Partners of Southern California, serving San Diego, Riverside, and Imperial counties, has 7 members in California Assembly District 75. These members provide tremendous value and significant impact to the communities they serve through CARE FOR DIVERSE POPULATIONS, STATE-OF-THE-ART PRACTICES, and INTEGRATED CARE with a focus on MANAGING CHRONIC CONDITIONS, PREVENTATIVE CARE, and QUALITY HEALTH OUTCOMES.

This report highlights their **2022 contributions**.



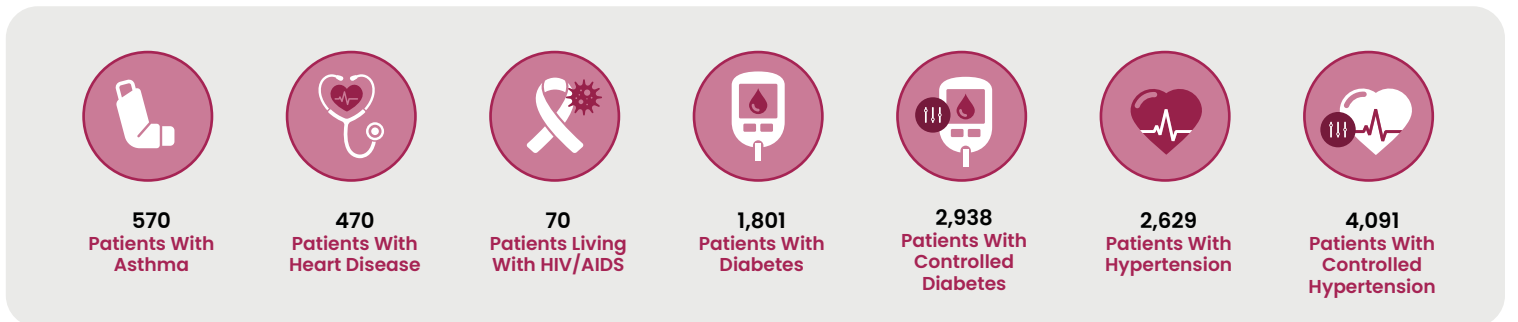
Care for Diverse Populations



Integrated Care: Patient Visits



Managing Chronic Conditions





Preventative Care



1,902
Breast Cancer Screenings



4,085
Cervical Cancer Screenings



4,654
Patients Received Immunizations And Seasonal Flu Vaccines



State-of-the-Art Practices



0
Health Centers Providing In-House Pharmacy Services



All Health Centers Offer Telehealth Care

References and Data Sources

- "Low Income" refers to those with earnings at or below 200% of federal poverty level (FPL) guidelines.
- Care for Vulnerable Populations: Bureau of Primary Health Care, HRSA, DHHS, 2022 Uniform Data System.

Health Centers Included in This Analysis

1. Community Health Systems, Inc.
2. Indian Health Council, Inc.
3. Neighborhood Healthcare
4. OPSAM Health
5. Southern Indian Health Council, Inc.
6. Sycuan Medical Dental Center
7. TrueCare

