

March 2025

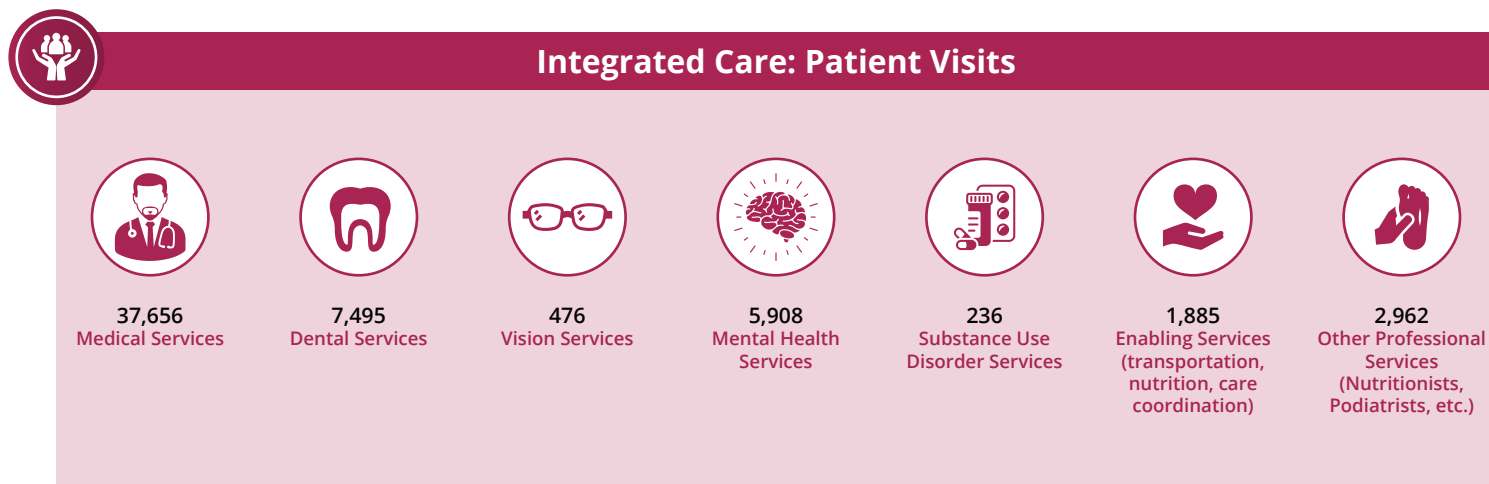
# The Impact of HCP Member Health Centers in California's Senate District 32

Senator Kelly Seyarto



Health Center Partners of Southern California, serving San Diego, Riverside, and Imperial counties, has 6 members in California's Senate District 32. These members provide tremendous value and significant impact to the communities they serve through **CARE FOR DIVERSE POPULATIONS**, **STATE-OF-THE-ART PRACTICES**, and **INTEGRATED CARE** with a focus on **MANAGING CHRONIC CONDITIONS**, **PREVENTATIVE CARE**, and **QUALITY HEALTH OUTCOMES**. This report highlights their contributions using UDS and IMPLAN data from 2023.

Care for Vulnerable Populations: Bureau of Primary Health Care, HRSA, OSHPD/HCAI, 2023 Uniform Data System.



# The Impact of HCP Member Health Centers in California's Senate District 32

Senator Kelly Seyarto



## Managing Chronic Conditions



**1,267**  
Patients With  
Diabetes



**509**  
Patients With  
Asthma



**1,944**  
Patients With  
Controlled Diabetes



**309**  
Patients With  
Heart Disease



**1,829**  
Patients With  
Hypertension



**99**  
Patients Living  
With HIV/AIDS



**2,780**  
Patients With  
Controlled  
Hypertension



## Preventive Care



**2,885**  
Immunizations And  
Seasonal Flu Vaccines



**695**  
Breast Cancer  
Screenings



**2,336**  
Cervical Cancer  
Screenings



## State-of-the-Art Practices



**4**  
Health Centers  
Providing In-House  
Pharmacy Services



**ALL Health  
Centers Offer  
Telehealth Care**

## Map of HCP Members in Senate District 32

- DAP Health
- Indian Health Council, Inc.
- Neighborhood Healthcare
- Planned Parenthood of the Pacific Southwest
- San Ysidro Health
- Vista Community Clinic

