

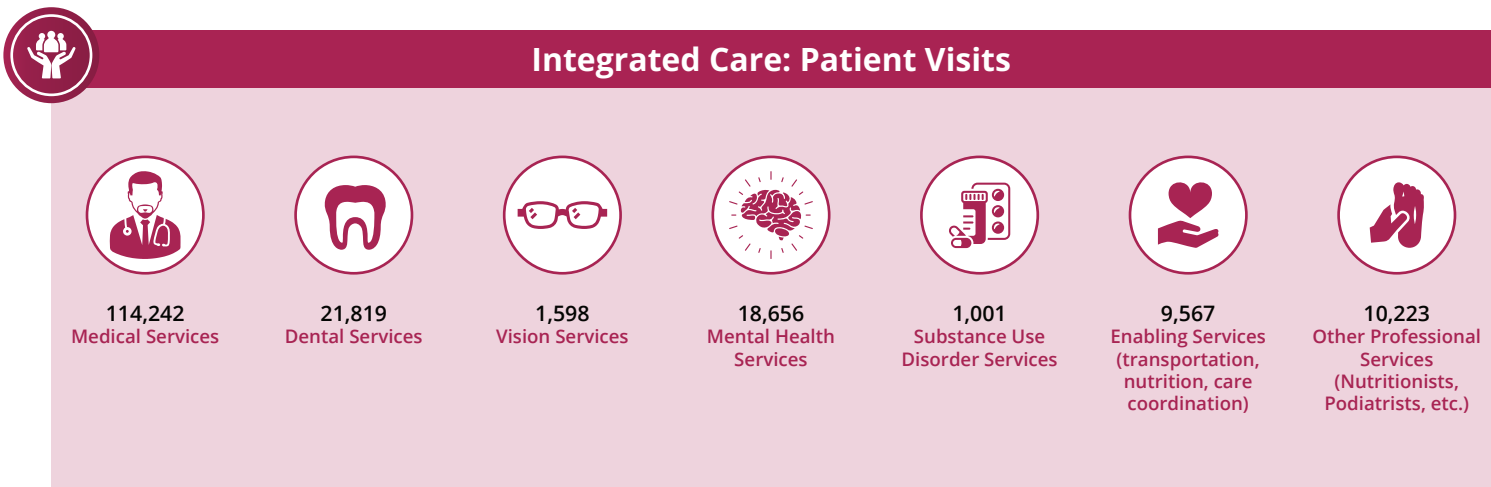
The Impact of HCP Member Health Centers in California's Assembly District 58

Assemblymember Leticia Castillo



Health Center Partners of Southern California, serving San Diego, Riverside, and Imperial counties, has 4 members in California's Assembly District 58. These members provide tremendous value and significant impact to the communities they serve through **care for diverse populations, state-of-the-art practices, and integrated care** with a focus on **managing chronic conditions, preventative care, and quality health outcomes**. This report highlights their contributions using UDS and IMPLAN data from 2024.

Care for Vulnerable Populations: Bureau of Primary Health Care, HRSA, OSHPD/HCAI, 2024 Uniform Data System.



The Impact of HCP Member Health Centers in California's Assembly District 58

Assemblymember Leticia Castillo



Managing Chronic Conditions



1,520
Patients With
Asthma



3,985
Patients With
Diabetes



6,606
Patients With
Controlled Diabetes



1,082
Patients With
Heart Disease



301
Patients Living
With HIV/AIDS



5,727
Patients With
Hypertension



9,367
Patients With
Controlled
Hypertension



Preventive Care



9,434
Immunizations And
Seasonal Flu Vaccines



2,131
Breast Cancer
Screenings



2,655
Cervical Cancer
Screenings



State-of-the-Art Practices



1
Health Centers
Providing In-House
Pharmacy Services



**ALL Health
Centers Offer
Telehealth Care**

Map of HCP Members in Assembly District 58

- Community Health Systems, Inc.
- DAP Health
- Neighborhood Healthcare
- Planned Parenthood of the Pacific Southwest

