

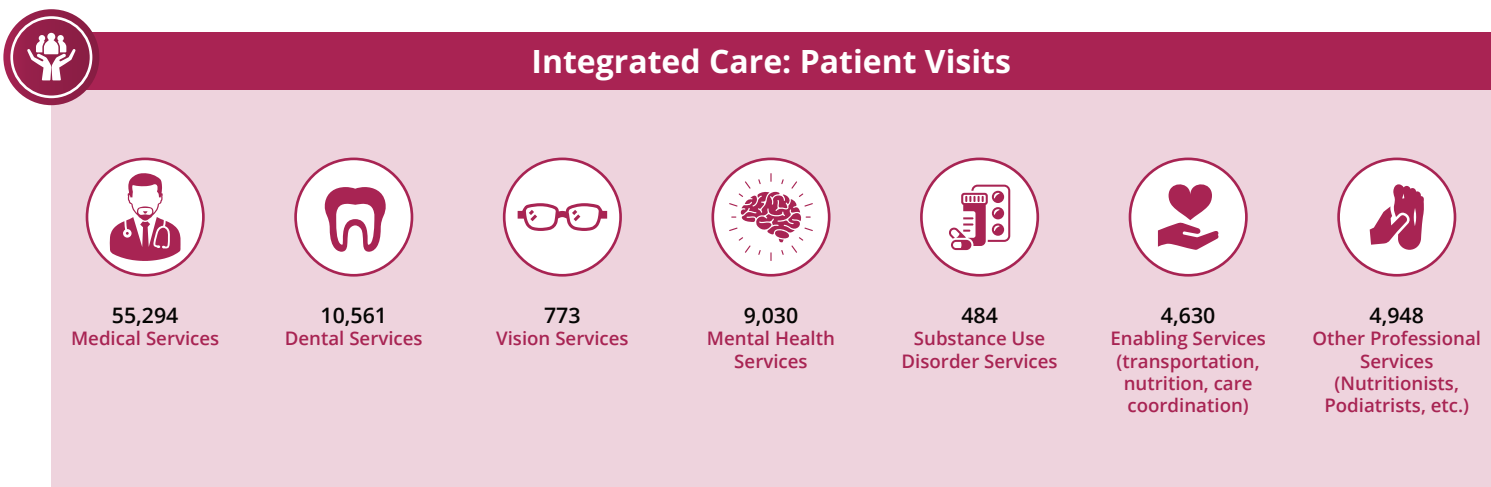
The Impact of HCP Member Health Centers in California's Assembly District 63

Assemblymember Natasha Johnson



Health Center Partners of Southern California, serving San Diego, Riverside, and Imperial counties, has 2 members in California's Assembly District 63. These members provide tremendous value and significant impact to the communities they serve through **care for diverse populations, state-of-the-art practices, and integrated care** with a focus on **managing chronic conditions, preventative care, and quality health outcomes**. This report highlights their contributions using UDS and IMPLAN data from 2024.

Care for Vulnerable Populations: Bureau of Primary Health Care, HRSA, OSHPD/HCAI, 2024 Uniform Data System.



The Impact of HCP Member Health Centers in California's Assembly District 63

Assemblymember Natasha Johnson



Managing Chronic Conditions



736
Patients With
Asthma



1,929
Patients With
Diabetes



3,197
Patients With
Controlled Diabetes



524
Patients With
Heart Disease



146
Patients Living
With HIV/AIDS



2,772
Patients With
Hypertension



4,534
Patients With
Controlled
Hypertension



Preventive Care



4,566
Immunizations And
Seasonal Flu Vaccines



1,031
Breast Cancer
Screenings



1,285
Cervical Cancer
Screenings



State-of-the-Art Practices



Health Centers
Providing In-House
Pharmacy Services



ALL Health
Centers Offer
Telehealth Care

Map of HCP Members in Assembly District 63

- Planned Parenthood of the Pacific Southwest
- Vista Community Clinic

