

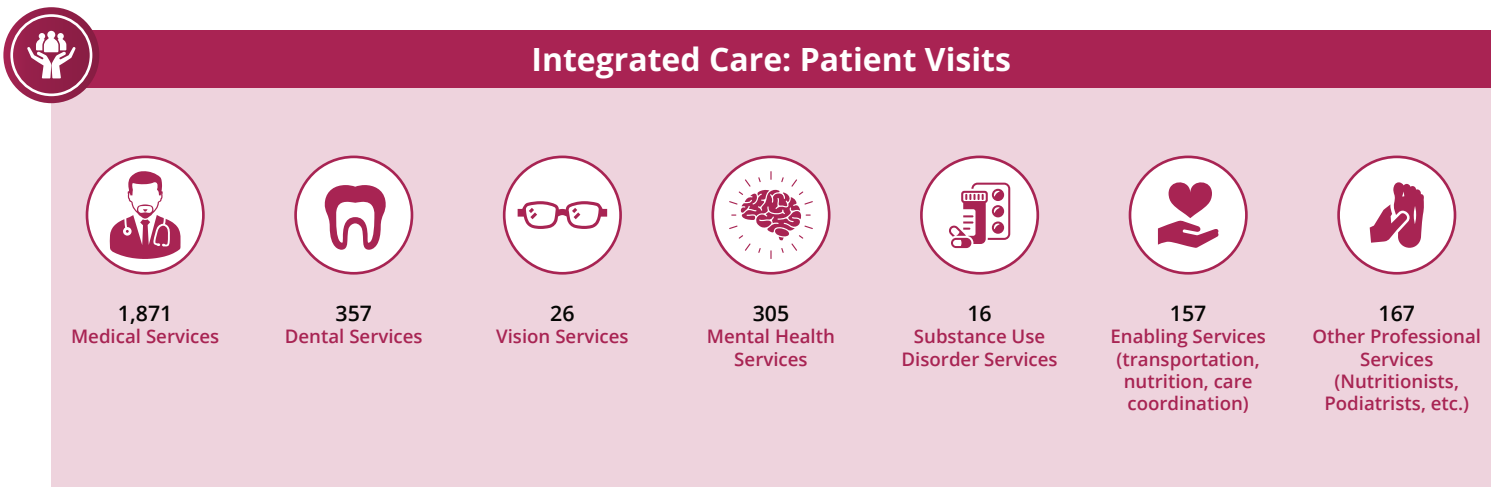
The Impact of HCP Member Health Centers in California's Assembly District 71

Assemblymember Kate Sanchez



Health Center Partners of Southern California, serving San Diego, Riverside, and Imperial counties, has 2 members in California's Assembly District 71. These members provide tremendous value and significant impact to the communities they serve through **care for diverse populations, state-of-the-art practices, and integrated care** with a focus on **managing chronic conditions, preventative care, and quality health outcomes**. This report highlights their contributions using UDS and IMPLAN data from 2024.

Care for Vulnerable Populations: Bureau of Primary Health Care, HRSA, OSHPD/HCAI, 2024 Uniform Data System.



The Impact of HCP Member Health Centers in California's Assembly District 71

Assemblymember Kate Sanchez



Managing Chronic Conditions



25 Patients With Asthma



65 Patients With Diabetes



108 Patients With Controlled Diabetes



18 Patients With Heart Disease



5 Patients Living With HIV/AIDS



94 Patients With Hypertension



153 Patients With Controlled Hypertension



Preventive Care



154 Immunizations And Seasonal Flu Vaccines



35 Breast Cancer Screenings



43 Cervical Cancer Screenings



State-of-the-Art Practices



Health Centers Providing In-House Pharmacy Services



ALL Health Centers Offer Telehealth Care

Map of HCP Members in Assembly District 71

- Neighborhood Healthcare
- Planned Parenthood of the Pacific Southwest

