

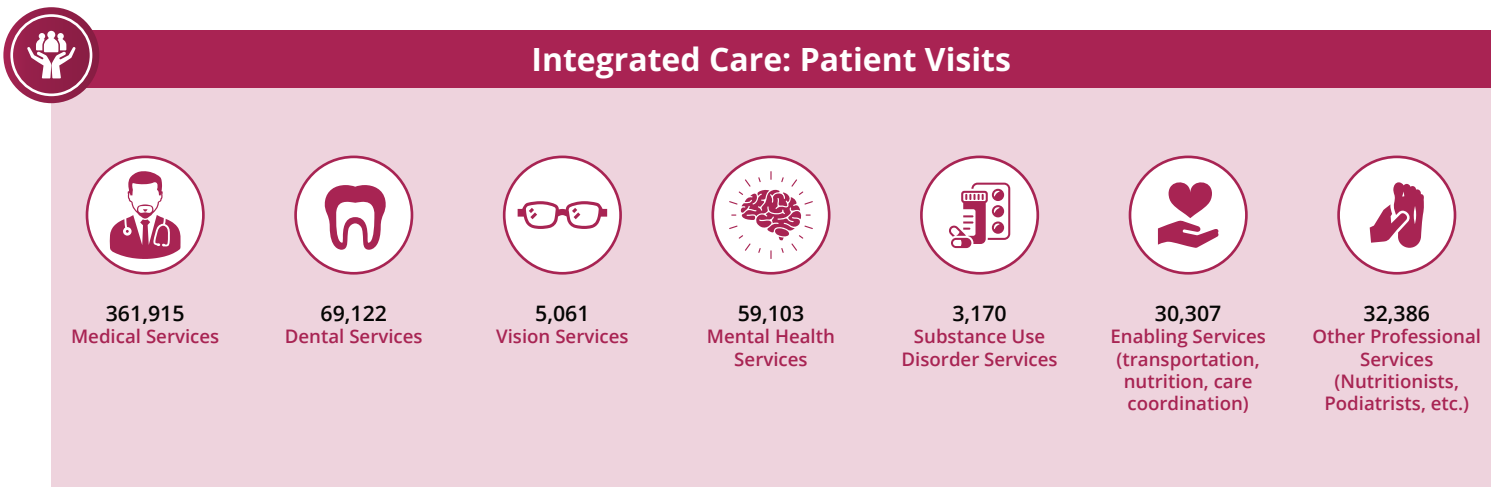
The Impact of HCP Member Health Centers in California's Assembly District 80

Assemblymember David Alvarez



Health Center Partners of Southern California, serving San Diego, Riverside, and Imperial counties, has 6 members in California's Assembly District 80. These members provide tremendous value and significant impact to the communities they serve through **care for diverse populations, state-of-the-art practices, and integrated care** with a focus on **managing chronic conditions, preventative care, and quality health outcomes**. This report highlights their contributions using UDS and IMPLAN data from 2024.

Care for Vulnerable Populations: Bureau of Primary Health Care, HRSA, OSHPD/HCAI, 2024 Uniform Data System.



The Impact of HCP Member Health Centers in California's Assembly District 80

Assemblymember David Alvarez



Managing Chronic Conditions



4,814
Patients With
Asthma



12,623
Patients With
Diabetes



20,926
Patients With
Controlled Diabetes



3,427
Patients With
Heart Disease



954
Patients Living
With HIV/AIDS



18,142
Patients With
Hypertension



29,674
Patients With
Controlled
Hypertension



Preventive Care



29,886
Immunizations And
Seasonal Flu Vaccines



6,751
Breast Cancer
Screenings



8,412
Cervical Cancer
Screenings



State-of-the-Art Practices



1
Health Centers
Providing In-House
Pharmacy Services



**ALL Health
Centers Offer
Telehealth Care**

Map of HCP Members in Assembly District 80

- Imperial Beach Community Clinic
- La Maestra Community Health Centers
- OPSAM Health
- Planned Parenthood of the Pacific Southwest
- San Ysidro Health
- Village Health Center

