

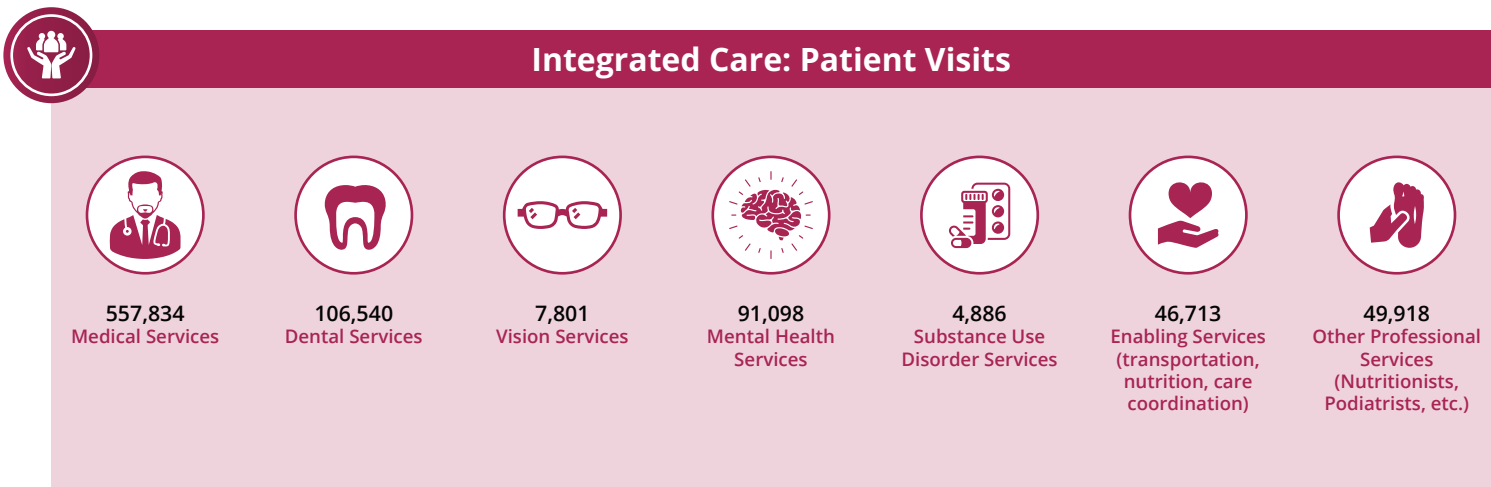
The Impact of HCP Member Health Centers in California's Senate District 18

Senator Steve Padilla



Health Center Partners of Southern California, serving San Diego, Riverside, and Imperial counties, has 9 members in California's Senate District 18. These members provide tremendous value and significant impact to the communities they serve through **care for diverse populations, state-of-the-art practices, and integrated care** with a focus on **managing chronic conditions, preventative care, and quality health outcomes**. This report highlights their contributions using UDS and IMPLAN data from 2024.

Care for Vulnerable Populations: Bureau of Primary Health Care, HRSA, OSHPD/HCAI, 2024 Uniform Data System.



The Impact of HCP Member Health Centers in California's Senate District 18

Senator Steve Padilla



Managing Chronic Conditions



7,420
Patients With
Asthma



19,456
Patients With
Diabetes



32,254
Patients With
Controlled Diabetes



5,282
Patients With
Heart Disease



1,471
Patients Living
With HIV/AIDS



27,963
Patients With
Hypertension



45,737
Patients With
Controlled
Hypertension



Preventive Care



46,065
Immunizations And
Seasonal Flu Vaccines



10,406
Breast Cancer
Screenings



12,965
Cervical Cancer
Screenings



State-of-the-Art Practices



3
Health Centers
Providing In-House
Pharmacy Services



**ALL Health
Centers Offer
Telehealth Care**

Map of HCP Members in Senate District 18

- DAP Health
- Imperial Beach Community Clinic
- Innercare
- La Maestra Community Health Centers
- Neighborhood Healthcare
- OPSAM Health
- Planned Parenthood of the Pacific Southwest
- San Ysidro Health
- Southern Indian Health Council
- Village Health Center

