

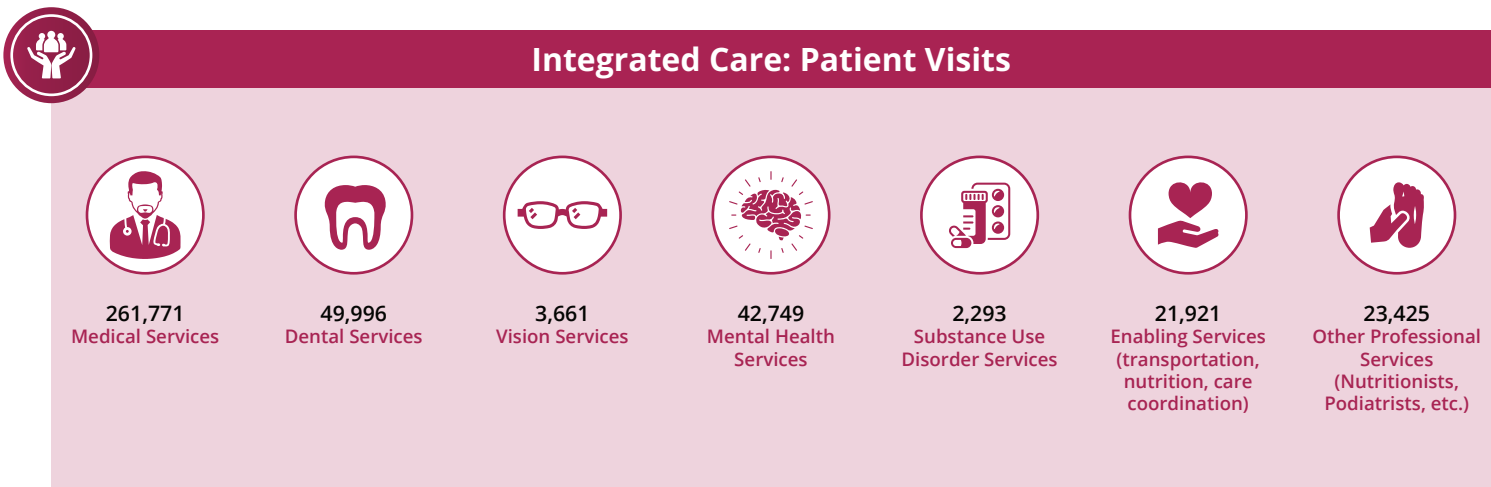
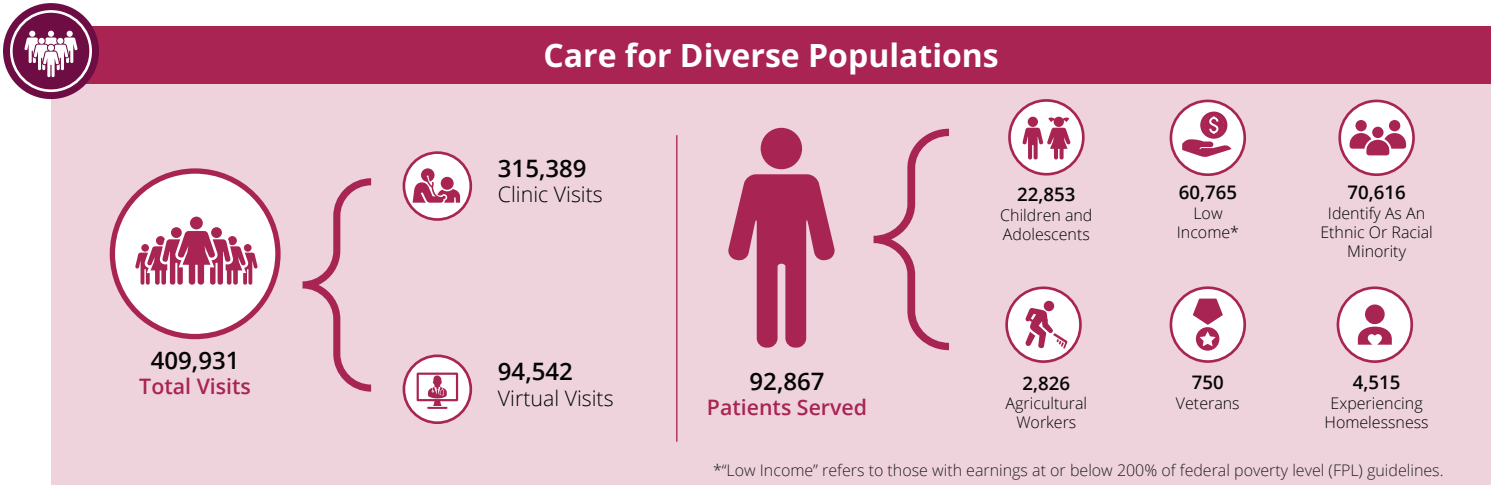
The Impact of HCP Member Health Centers in California's Senate District 19

Senator Rosilicie Ochoa Bogh



Health Center Partners of Southern California, serving San Diego, Riverside, and Imperial counties, has 4 members in California's Senate District 19. These members provide tremendous value and significant impact to the communities they serve through **care for diverse populations, state-of-the-art practices, and integrated care** with a focus on **managing chronic conditions, preventative care, and quality health outcomes**. This report highlights their contributions using UDS and IMPLAN data from 2024.

Care for Vulnerable Populations: Bureau of Primary Health Care, HRSA, OSHPD/HCAI, 2024 Uniform Data System.



The Impact of HCP Member Health Centers in California's Senate District 19

Senator Rosilicie Ochoa Bogh



Managing Chronic Conditions



3,482
Patients With
Asthma



9,130
Patients With
Diabetes



15,136
Patients With
Controlled Diabetes



2,479
Patients With
Heart Disease



690
Patients Living
With HIV/AIDS



13,122
Patients With
Hypertension



21,463
Patients With
Controlled
Hypertension



Preventive Care



21,617
Immunizations And
Seasonal Flu Vaccines



4,883
Breast Cancer
Screenings



6,084
Cervical Cancer
Screenings



State-of-the-Art Practices



Health Centers
Providing In-House
Pharmacy Services



ALL Health
Centers Offer
Telehealth Care

Map of HCP Members in Senate District 19

- DAP Health
- Inncare
- Neighborhood Healthcare
- Planned Parenthood of the Pacific Southwest

