

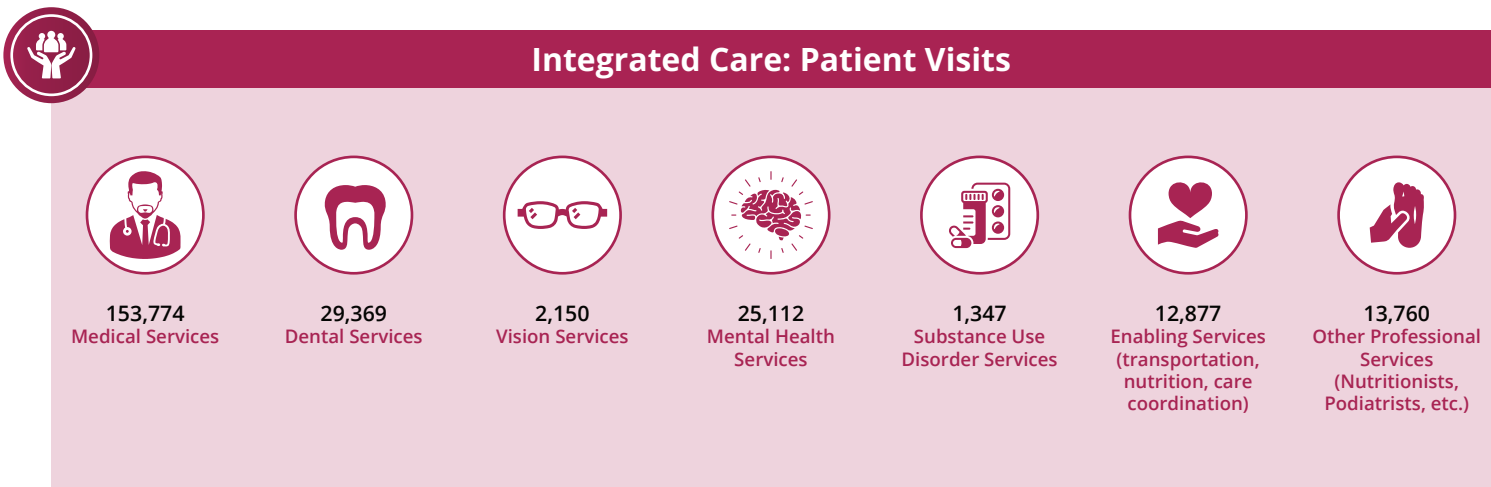
The Impact of HCP Member Health Centers in California's Senate District 31

Senator Sabrina Cervantes



Health Center Partners of Southern California, serving San Diego, Riverside, and Imperial counties, has 5 members in California's Senate District 31. These members provide tremendous value and significant impact to the communities they serve through **care for diverse populations, state-of-the-art practices, and integrated care** with a focus on **managing chronic conditions, preventative care, and quality health outcomes**. This report highlights their contributions using UDS and IMPLAN data from 2024.

Care for Vulnerable Populations: Bureau of Primary Health Care, HRSA, OSHPD/HCAI, 2024 Uniform Data System.



The Impact of HCP Member Health Centers in California's Senate District 31

Senator Sabrina Cervantes



Managing Chronic Conditions



2,045
Patients With
Asthma



5,363
Patients With
Diabetes



8,891
Patients With
Controlled Diabetes



1,456
Patients With
Heart Disease



405
Patients Living
With HIV/AIDS



7,708
Patients With
Hypertension



12,608
Patients With
Controlled
Hypertension



Preventive Care



12,698
Immunizations And
Seasonal Flu Vaccines



2,869
Breast Cancer
Screenings



3,574
Cervical Cancer
Screenings



State-of-the-Art Practices



1
Health Centers
Providing In-House
Pharmacy Services



ALL Health
Centers Offer
Telehealth Care

Map of HCP Members in Senate District 31

- Community Health Systems, Inc.
- DAP Health
- Neighborhood Healthcare
- Planned Parenthood of the Pacific Southwest
- TrueCare

