

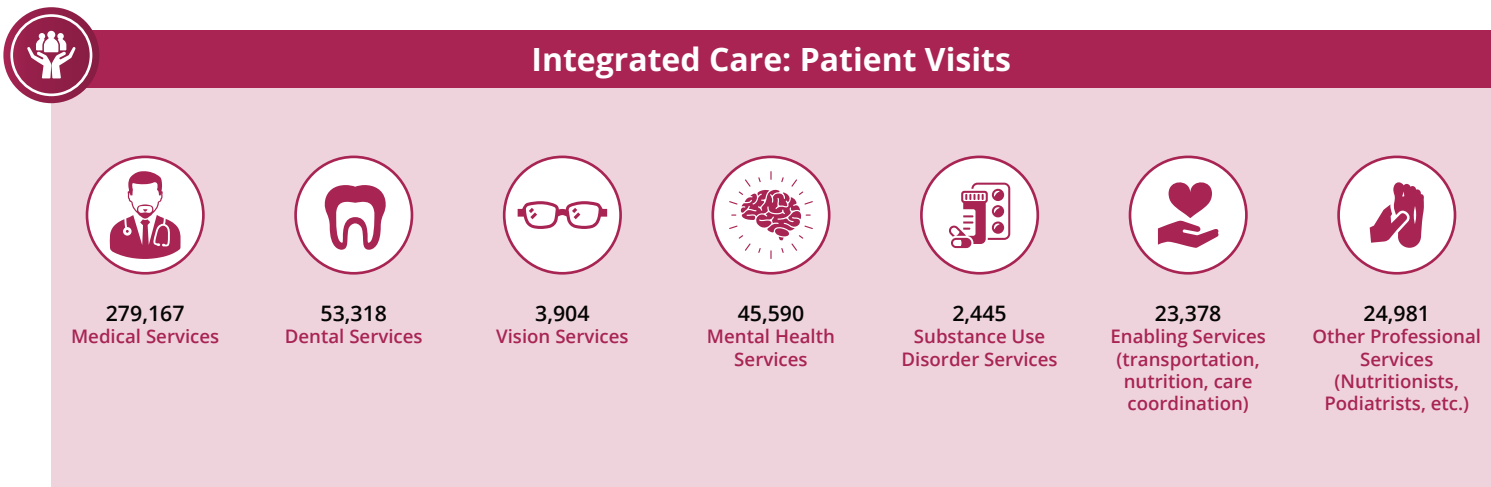
The Impact of HCP Member Health Centers in California's Senate District 38

Senator Catherine Blakespear



Health Center Partners of Southern California, serving San Diego, Riverside, and Imperial counties, has 4 members in California's Senate District 38. These members provide tremendous value and significant impact to the communities they serve through **care for diverse populations, state-of-the-art practices, and integrated care** with a focus on **managing chronic conditions, preventative care, and quality health outcomes**. This report highlights their contributions using UDS and IMPLAN data from 2024.

Care for Vulnerable Populations: Bureau of Primary Health Care, HRSA, OSHPD/HCAI, 2024 Uniform Data System.





The Impact of HCP Member Health Centers in California's Senate District 38

Senator Catherine Blakespear



Managing Chronic Conditions



3,713
Patients With
Asthma



9,737
Patients With
Diabetes



16,142
Patients With
Controlled Diabetes



2,644
Patients With
Heart Disease



736
Patients Living
With HIV/AIDS



13,994
Patients With
Hypertension



22,889
Patients With
Controlled
Hypertension



Preventive Care



23,053
Immunizations And
Seasonal Flu Vaccines



5,208
Breast Cancer
Screenings



6,488
Cervical Cancer
Screenings



State-of-the-Art Practices



5
Health Centers
Providing In-House
Pharmacy Services



ALL Health
Centers Offer
Telehealth Care

Map of HCP Members in Senate District 38

- Planned Parenthood of the Pacific Southwest
- San Ysidro Health
- TrueCare
- Vista Community Clinic

