

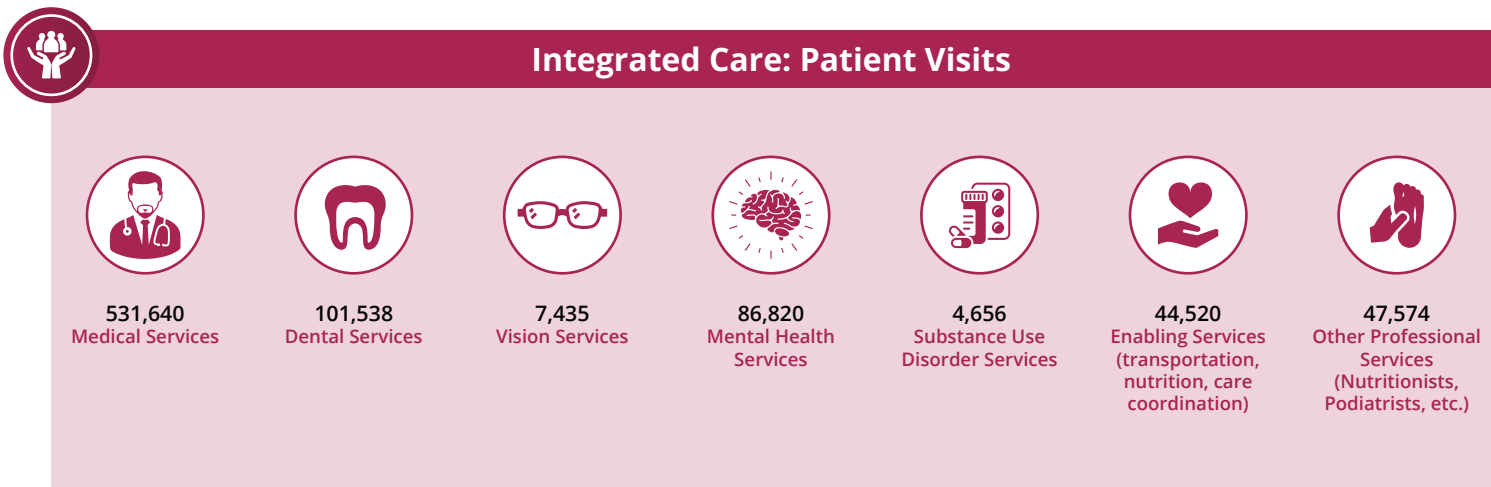
The Impact of HCP Member Health Centers in California's Senate District 39

Senator Akilah Weber Pierson



Health Center Partners of Southern California, serving San Diego, Riverside, and Imperial counties, has 9 members in California's Senate District 39. These members provide tremendous value and significant impact to the communities they serve through **care for diverse populations, state-of-the-art practices, and integrated care** with a focus on **managing chronic conditions, preventative care, and quality health outcomes**. This report highlights their contributions using UDS and IMPLAN data from 2024.

Care for Vulnerable Populations: Bureau of Primary Health Care, HRSA, OSHPD/HCAI, 2024 Uniform Data System.





The Impact of HCP Member Health Centers in California's Senate District 39

Senator Akilah Weber Pierson



Managing Chronic Conditions



7,072
Patients With
Asthma



18,543
Patients With
Diabetes



30,740
Patients With
Controlled Diabetes



5,034
Patients With
Heart Disease



1,402
Patients Living
With HIV/AIDS



26,650
Patients With
Hypertension



43,590
Patients With
Controlled
Hypertension



Preventive Care



43,902
Immunizations And
Seasonal Flu Vaccines



9,917
Breast Cancer
Screenings



12,356
Cervical Cancer
Screenings



State-of-the-Art Practices



1
Health Centers
Providing In-House
Pharmacy Services



**ALL Health
Centers Offer
Telehealth Care**

Map of HCP Members in Senate District 39

- DAP Health
- La Maestra Community Health Centers
- Neighborhood Healthcare
- Planned Parenthood of the Pacific Southwest
- San Diego American Indian Health Center
- San Diego Family Care
- San Ysidro Health
- Sycuan Medical Dental Center
- Village Health Center

